

Citylink

2020-2021 Monthly Ridership Comparison

	Dec'20	Jan'21	Feb'21	Mar'21	Apr'21	May'21	Jun'21	Jul'21	Aug'21	Sep'21	Oct'21	Nov'21	Dec'21
A Route	3,502	3,203	3,160	4,193	3,047	2,833	2,881	2,707	3,060	3,142	3,336	2,954	3,065
B Route	3,109	3,022	3,607	3,165	2,861	2,537	2,709	2,751	2,894	2,849	2,934	2,751	2,589
C Route	2,768	2,186	2,303	2,649	2,584	2,104	2,225	2,153	2,680	2,751	2,556	2,176	2,340
North	9,379	8,411	9,070	10,007	8,492	7,474	7,815	7,611	8,634	8,742	8,826	7,881	7,994
Link	3,581	3,815	3,599	3,711	3,333	3,167	3,183	3,597	3,308	3,081	3,310	3,177	3,871
Rural	2,574	2,601	2,611	2,896	2,686	2,429	2,112	2,087	2,223	2,014	2,682	1,671	1,617
South	6,155	6,416	6,210	6,607	6,019	5,596	5,295	5,684	5,531	5,095	5,992	4,848	5,488
Citylink Para	1,259	1,208	1,022	1,427	1,420	1,346	1,406	1,317	1,378	1,303	1,312	1,238	1,281
KH	1,354	1,201	1,155	1,725	1,594	1,477	1,595	1,637	1,666	1,532	1,359	1,435	1,658
Para	2,613	2,409	2,176	3,152	3,014	2,823	3,001	2,954	3,044	2,835	2,671	2,673	2,939
Totals	18,147	17,236	17,456	19,766	17,525	15,893	16,111	16,249	17,209	16,672	17,489	15,402	16,421

Citylink

2019-2021 Total Ridership Comparison

NORTH

	Jan	Feb	Mar	Apr	May	Jun	Jul	Aug	Sep	Oct	Nov	Dec
2019	11,985	11,118	11,860	12,670	12,259	11,139	12,147	11,931	11,127	13,057	11,207	10,641
2020	11,611	11,734	9,842	5,688	6,040	8,000	8,711	8,654	8,427	9,184	7,922	9,379
2021	8,411	9,070	10,007	8,492	7,474	7,815	7,611	8,634	8,742	8,826	7,881	7,994

SOUTH

	Jan	Feb	Mar	Apr	May	Jun	Jul	Aug	Sep	Oct	Nov	Dec
2019	10,389	8,620	9,521	8,822	8,796	8,420	8,849	8,707	8,626	9,384	8,686	8,788
2020	9,831	9,291	5,118	375	5,071	5,337	5,233	5,236	5,109	5,992	5,877	6,155
2021	6,416	6,210	6,607	6,019	5,596	5,295	5,684	5,531	5,095	5,992	4,848	5,488

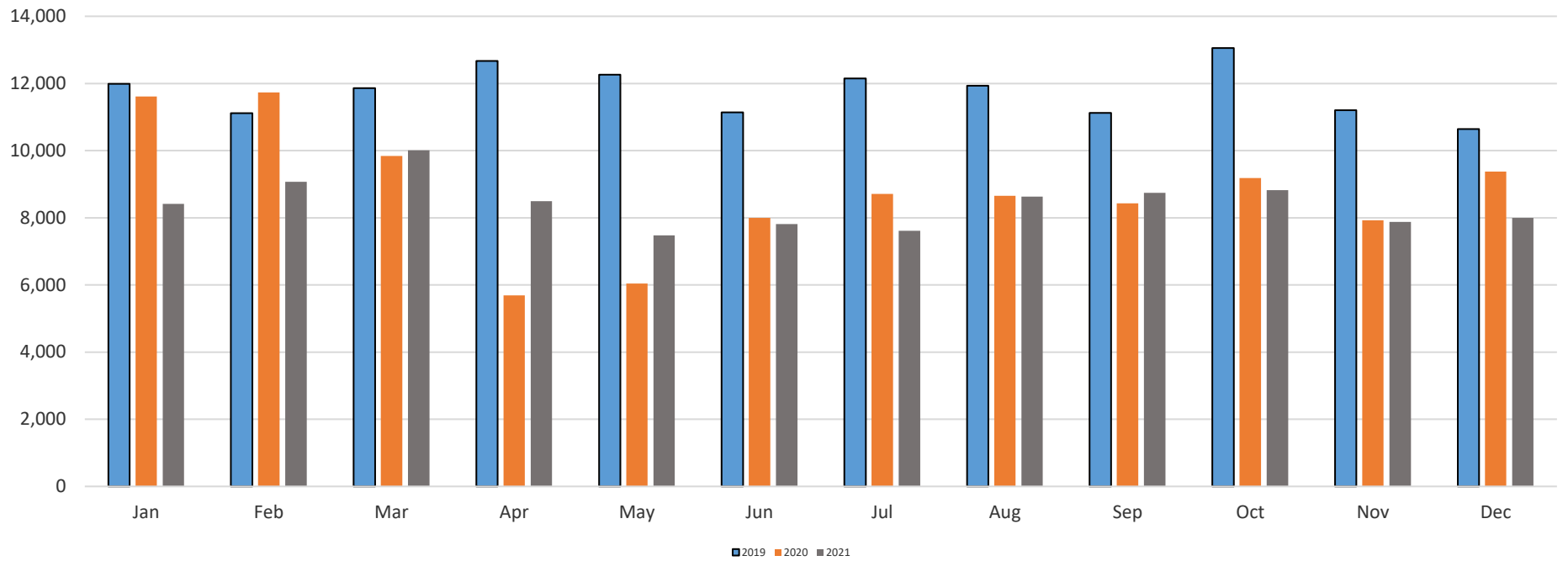
COMBINED

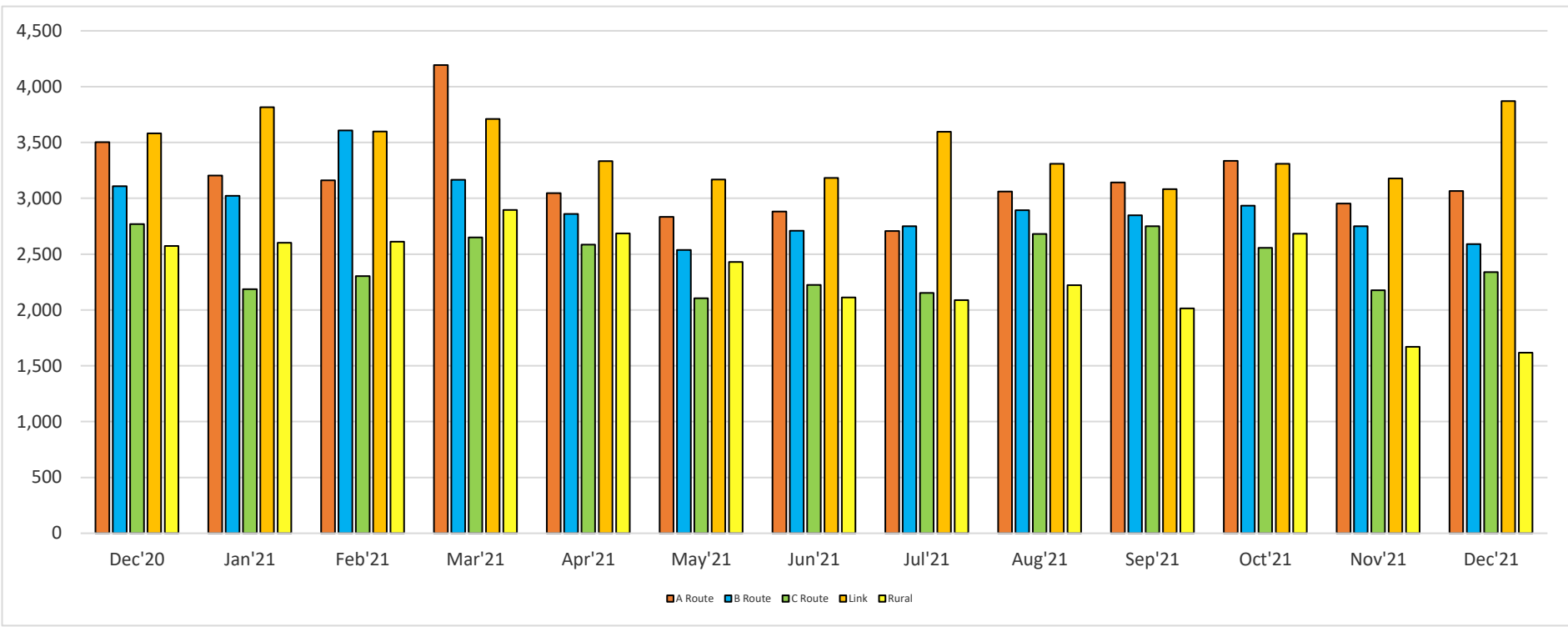
	Jan	Feb	Mar	Apr	May	Jun	Jul	Aug	Sep	Oct	Nov	Dec
2019	22,374	19,738	21,381	21,492	21,055	19,559	20,996	20,638	19,753	22,441	19,893	19,429
2020	21,442	21,025	14,960	6,063	11,111	13,337	13,944	13,890	13,536	15,176	13,799	15,534
2021	14,827	15,280	16,614	14,511	13,070	13,110	13,295	14,165	13,837	14,818	12,729	13,482

PARATRANSIT

	Jan	Feb	Mar	Apr	May	Jun	Jul	Aug	Sep	Oct	Nov	Dec
2019	3,700	3,629	3,748	3,546	3,565	3,157	3,222	3,370	3,259	3,624	3,349	3,504
2020	4,011	3,466	3,379	1,641	2,108	2,609	2,635	2,479	2,595	2,558	2,614	2,613
2021	2,409	2,176	3,152	3,014	2,823	3,001	2,954	3,044	2,835	2,671	2,673	2,939

Fixed Route Yearly Citylink North





Fixed Route Yearly Comparison Combined

