



Our Transportation Future

With both opportunities and challenges

2021 Huetter Corridor Alignment Map Update

June 8, 2021

So What's Happening in 2021

- ✓ **US-95 NORTH FROM I-90 TO STATE HIGHWAY 53 WILL HAVE ADDITIONAL INTERSECTION MODIFICATIONS**
 - ✓ TRAVEL RESTRICTIONS AT SELECT INTERSECTIONS WILL IMPACT TRAVEL TIMES THROUGH THE CORRIDOR.
 - ✓ ADDITIONAL STORAGE CAPACITY ON LEFT TURN LANES ARE BEING INSTALLED
 - ✓ NEW U.S. 95 GARWOOD OVERPASS WILL CONTINUE THROUGH 2021-22
- ✓ **Continuation of U.S. 95 Highway Widening Improvements North of Athol**
- ✓ **Bridge Deck Repairs on I-90 and U.S. 95 Spokane River Bridge**
- ✓ **Environmental Documents for I-90 Widening and the Huetter Corridor**

So What's Happening in 2022 -2023

- ✓ SH-41 CORRIDOR ACCESS WIDENING AND ACCESS CONTROL FROM I-90 TO RATHDRUM WILL BE COMPLETED
 - ✓ THIS WILL BECOME AN ACCESS CONTROLLED 4 LANE DIVIDED HIGHWAY
 - ✓ SIGNALS INSTALLED AT NO LESS THAN QUARTER MILE SPACING
 - ✓ NEW BICYCLE AND PEDESTRIAN TRAIL ON THE EAST SIDE OF SH-41
- ✓ SH-53 CORRIDOR SAFETY PROJECTS FROM THE STATE LINE TO RAMSEY ROAD
- ✓ RAMSEY ROAD EXTENSION WYOMING TO LANCASTER RIGHT OF WAY AND CONSTRUCTION
- ✓ U.S. 95 I-90 TO SH-53 NEW SIGNALS AND SIGNAL TIMING UPDATES

So What's Happening in 2023-26+

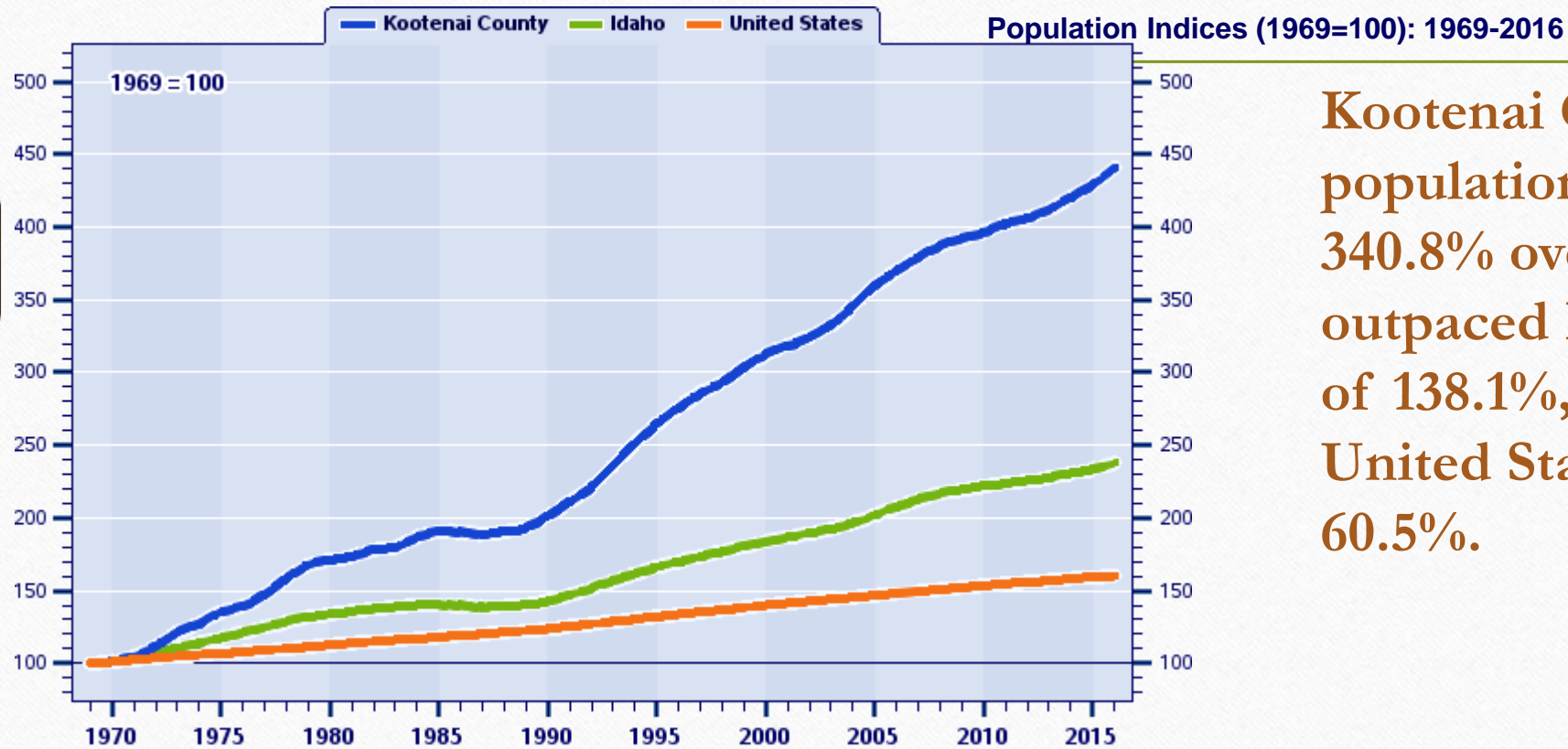
- ✓ Pleasant View Grade Separation of BNSF Mainline and SH-53 Interchange
- ✓ SH-41 CORRIDOR WILL SEE A NEW INTERCHANGE AT I-90
 - ✓ THIS WILL BECOME A COMPLETELY NEW INTERCHANGE SLIGHTLY WEST AND NORTH OF TODAY'S LOCATION
 - ✓ SIGNALS INSTALLED AT THE INTERCHANGE WILL PROVIDE ACCESS TO I-90, SH-41 AND SELTICE WAY.
 - ✓ NEW BICYCLE AND PEDESTRIAN TRAILS WILL BE AN INTEGRAL PART OF THE PROJECT
- ✓ SH-41 AND DIAGONAL ROAD TURN BAYS
- ✓ US-95 INTERCHANGE WITH I-90 RECONSTRUCTION
- ✓ I-90 WIDENING TO 6 LANES FROM STATELINE TO SHERMAN

So, Do you still rely on.....?



- Didn't think
so.....

History and Today

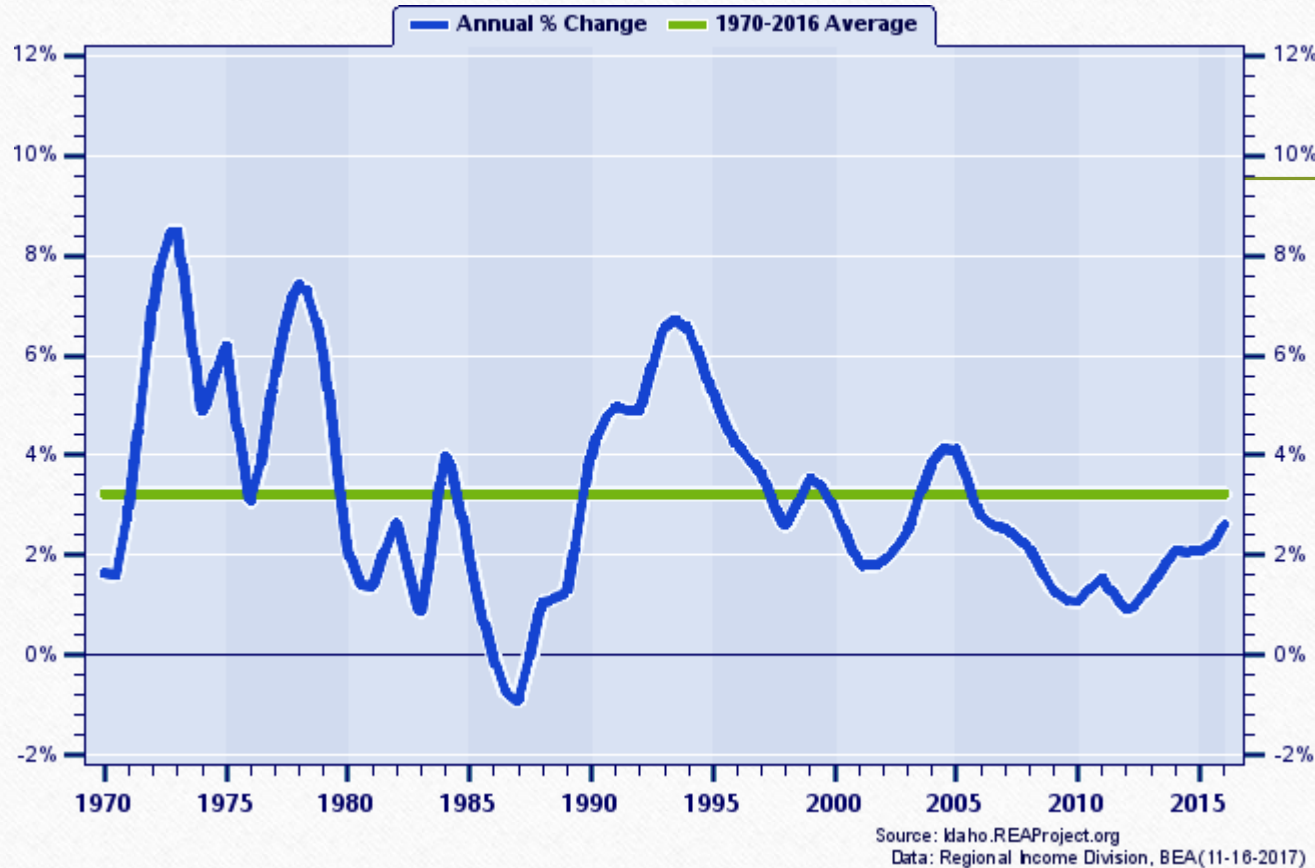


Source: Idaho REAP Project.org
Data: Regional Income Division, BEA (11-16-2017)

Kootenai County's overall population growth was 340.8% over 1969-2018 outpaced Idaho's increase of 138.1%, and topped the United States' increase of 60.5%.

History and Today

Kootenai County Population:
Annual Percent Change, 1970-2016



On average, Kootenai County's population grew at an **annual rate of 3.23% over 1970-2016**. The county recorded its highest growth in **1973 (8.48%)** and posted its lowest growth in **1987 (-0.90%)**.

In 2016, Kootenai County's population grew by 2.62%

Today and Into the Future 2040

Jurisdiction	1990 Census Population	2000 Census Population	2010 Historic Annual Growth Rates		(3) Average Annual Growth Rates for Model Projections	2018		2030		2040		Total Increase 2018-2040		
			(1) 2010 Census Population	2010 Census Occupied TOTAL Housing		(4) Total Population	(5) Total Dwelling Units	(4) Total Population	(5) Total Dwelling Units	(4) Total Population	(5) Total Dwelling Units	Pop'n Increase	TOTAL NEW Dwelling Units	NEW Dwelling Units Total % of Count Growth
Cities (Incorporated areas only in 2018 data - ACIs are included in 2040 projections)														
Athol	346	676	692	282	0.234%	695	284	715	292	732	299	37	15	0.0%
Coeur d'Alene	24,563	34,514	44,137	18,395	2.499%	49,780	20,742	66,940	27892	85,681	35,700	35901	14959	28.2%
Dalton Gardens	1,951	2,278	2,335	883	0.247%	2,478	939	2,553	967	2,616	991	138	52	0.1%
Fernan (Included w/CDA)	170	186	169	72	0.000%	169	72	169	72	169	72	0	0	0.0%
Harrison	226	267	203	100	0.000%	318	157	318	157	318	157	0	0	0.0%
Hauser Lake	380	668	678	302	0.149%	719	319	731	325	742	330	24	11	0.0%
Hayden	3,744	9,159	13,294	5,212	3.796%	15,400	6,039	24,082	9444	34,955	13,708	19554	7668	14.5%
Hayden Lake	338	494	574	256	1.512%	814	363	975	435	1,133	506	318	142	0.3%
Huetter (Included w/Post Falls)	82	96	100	42	0.409%	96	40	101	42	105	44	9	4	0.0%
Post Falls	7,249	17,247	27,574	10,263	4.801%	36,555	13,589	64,169	23855	102,561	38,127	66006	24538	46.2%
Rathdrum	2,000	4,816	6,826	2,427	3.549%	8,562	3,047	13,011	4630	18,441	6,563	9879	3516	6.6%
Spirit Lake	790	1,376	1,945	739	3.521%	2,441	928	3,698	1406	5,227	1,988	2786	1059	2.0%
State Line (Included w/Post Falls)	26	28	38	20	3.101%	24	13	35	18	48	25	23	12	0.0%
Worley	182	223	257	104	1.429%	287	116	340	138	392	159	105	43	0.1%
Urban Totals	42,047	72,028	98,822	39,097	3.250%	118,339	46,649	177,839	69,674	253,120	98,667	134,782	52,019	98.0%
Unincorporated Totals			39,673	15,102		48,328	18,465	49,824	19,028	51,114	19,513	2,785	1,047	2.0%
Kootenai County Total	69,795	108,685	138,494	54,200	2.4%	166,667	65,114	227,664	88,702	304,234	118,180	137,567	53,066	100%

2010 County Total 138,494

2040 County Total 304,000

Post Falls & Coeur d'Alene's Longer Term Transportation Future?

Some Facts to consider about OUR transportation system:

We are currently driving and relying on a legacy Transportation system (800+ miles).

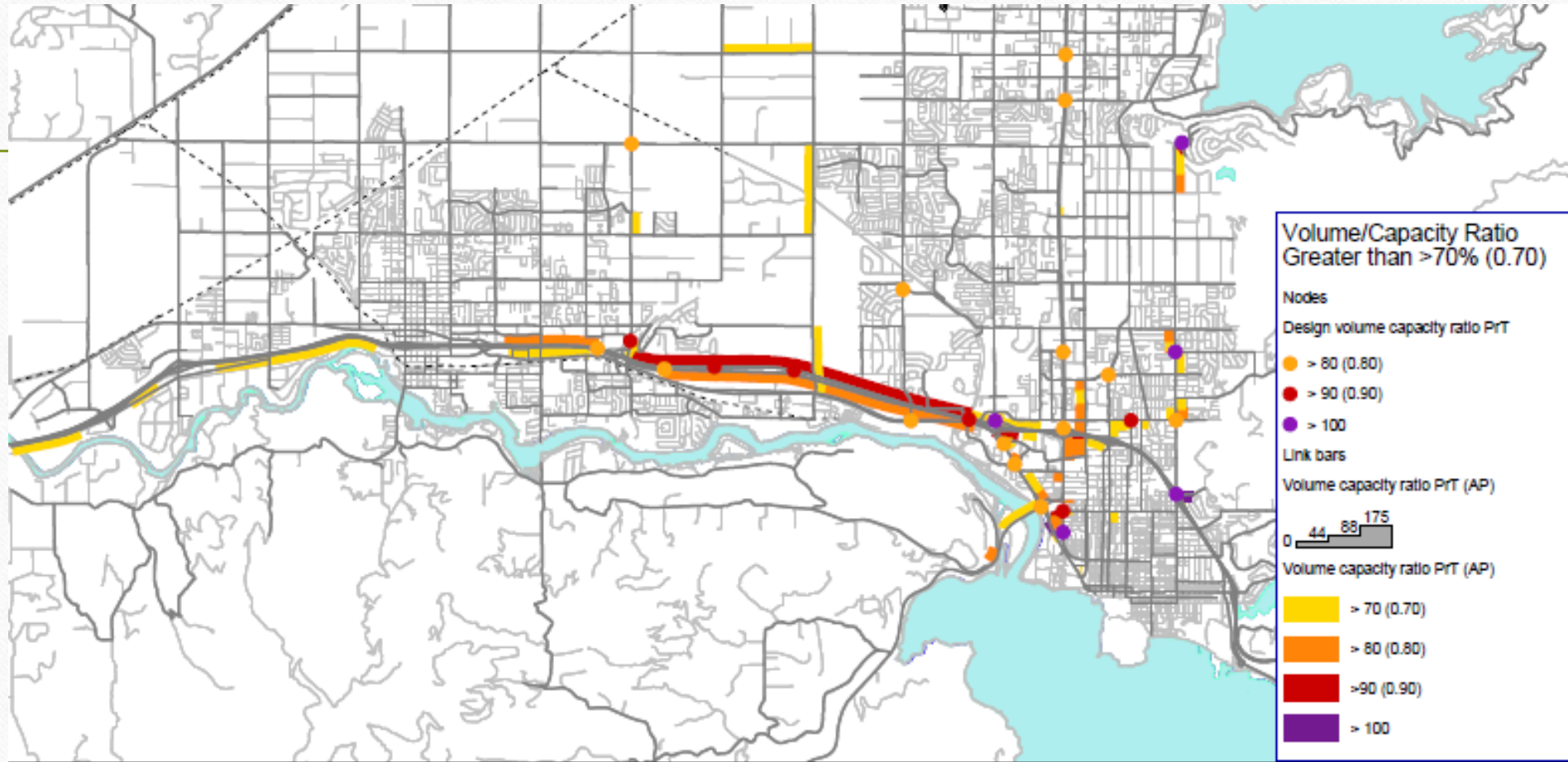
Most recently improved in the 60's and 70's.

It has served Kootenai County well.....until now.

System Performance, Resiliency and Reliability has become an Issue



Today's Travel Demand



What we're seeing

August 14, 2019

8:30 am



Detour Length 67 or 102 miles

What we're seeing Today



1.5 hour Lane Closure

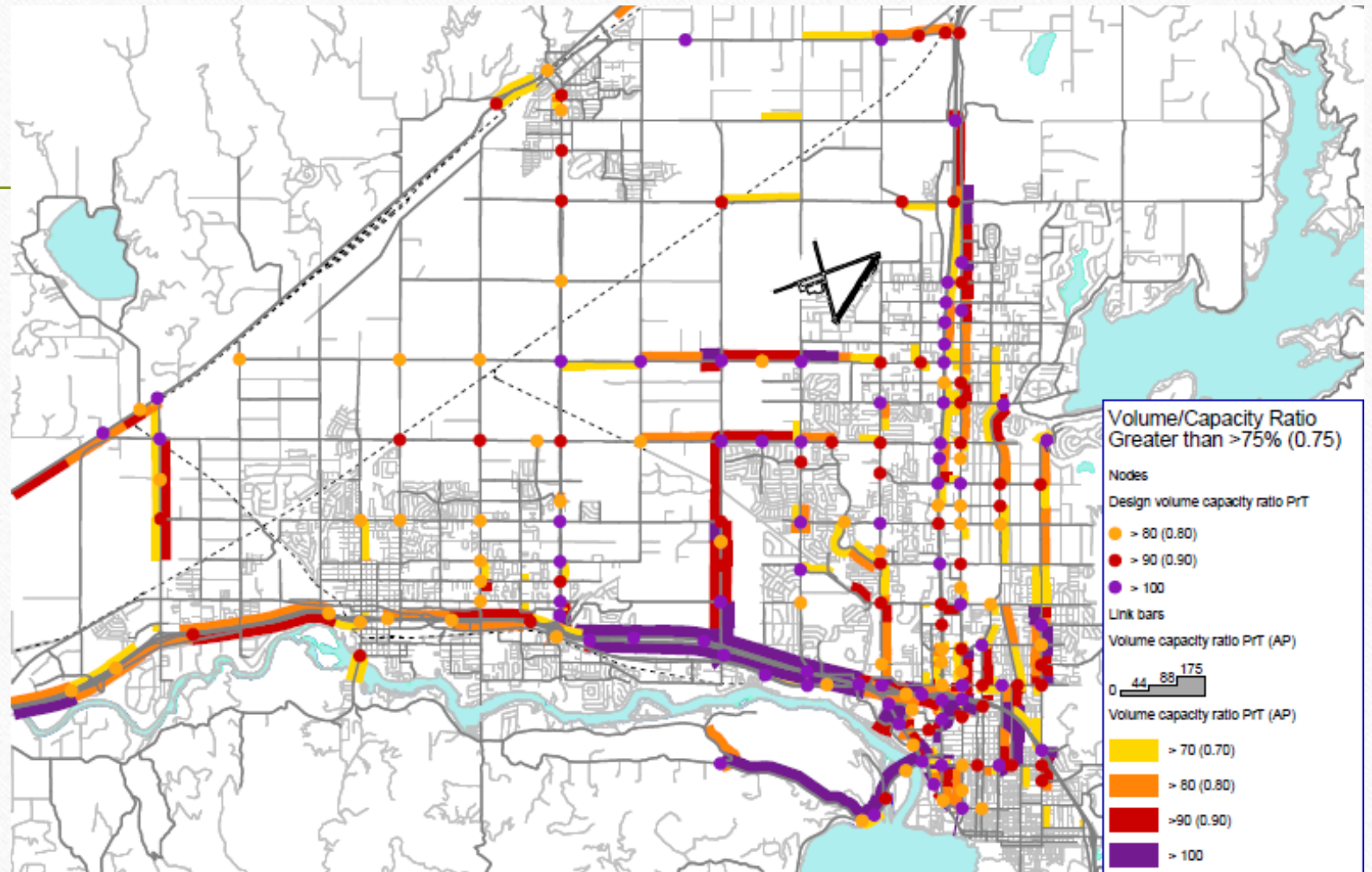
**August 14, 2019
1:30 pm**

Zero Detour's

Detour Length: 0

Tomorrows Travel Demand

2040 No Build
(Only currently
funded projects)



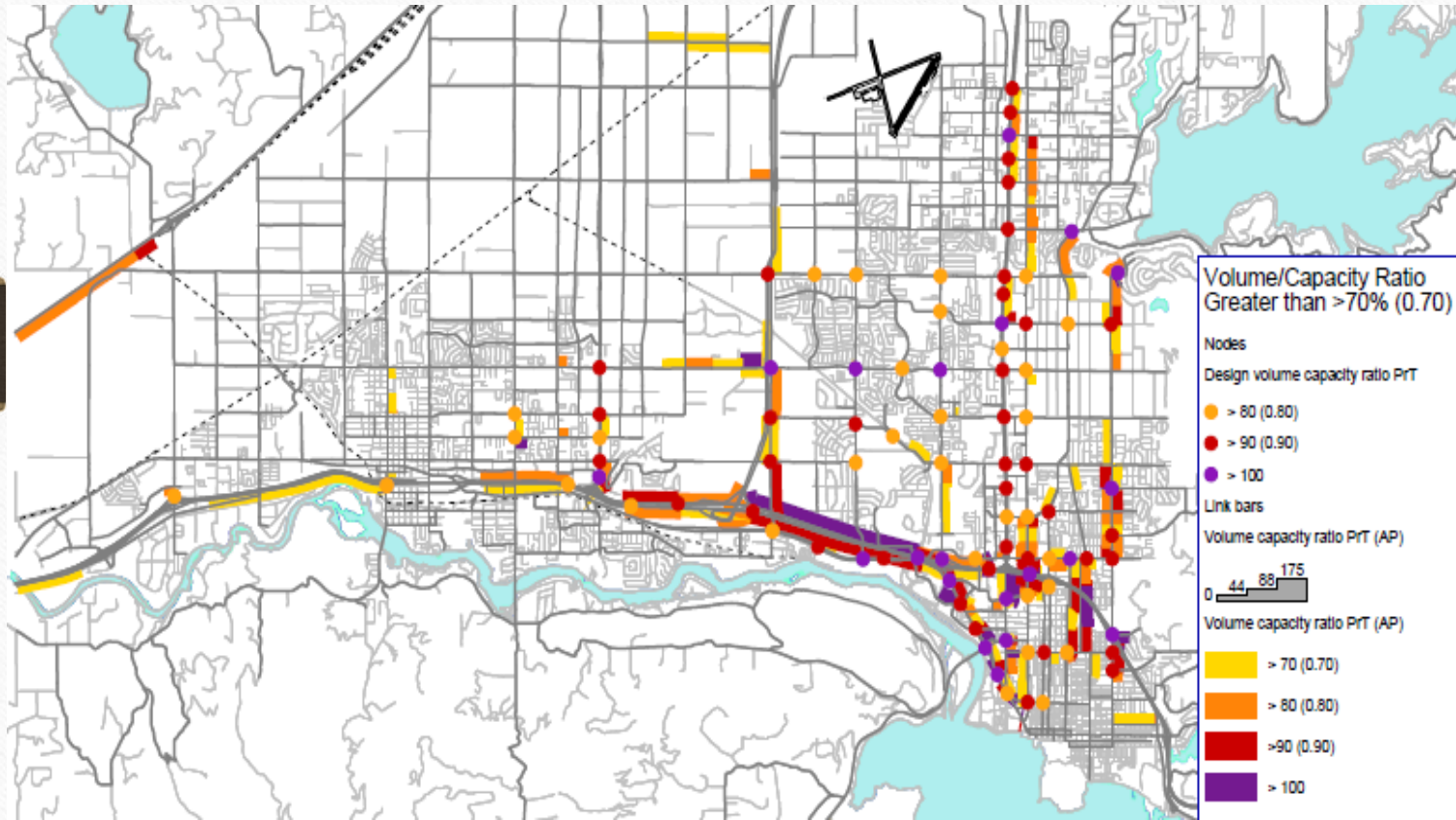
So What are the BIG 5 Regional projects

- ✓ I-90 TO SIX LANES FROM STATE LINE TO SHERMAN AVE **FUNDED**
- ✓ HUETTER CORRIDOR I-90 TO US 95 **NEPA FUNDED**
- ✓ I-90 PORT OF ENTRY TO MC GUIRE RD **GRANT PENDING**
- ✓ CREATION OF A REGIONAL TRAFFIC MANAGEMENT CENTER
- ✓ WIDEN U.S. 95 SPOKANE RIVER BRIDGE AND APPROACHES

Travel Demand Into the Future

2040 Build

(Projects currently in the Plan but not all funded)



Total Capital Project Costs 2020-2040

\$1,470 Million

Big 5 Projects: \$788 Million

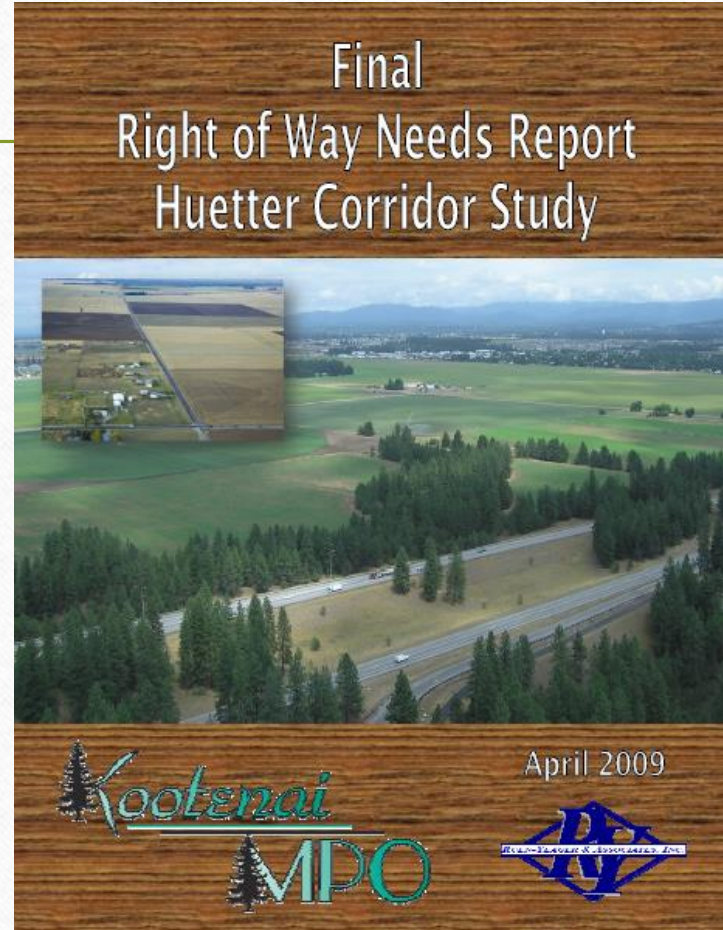
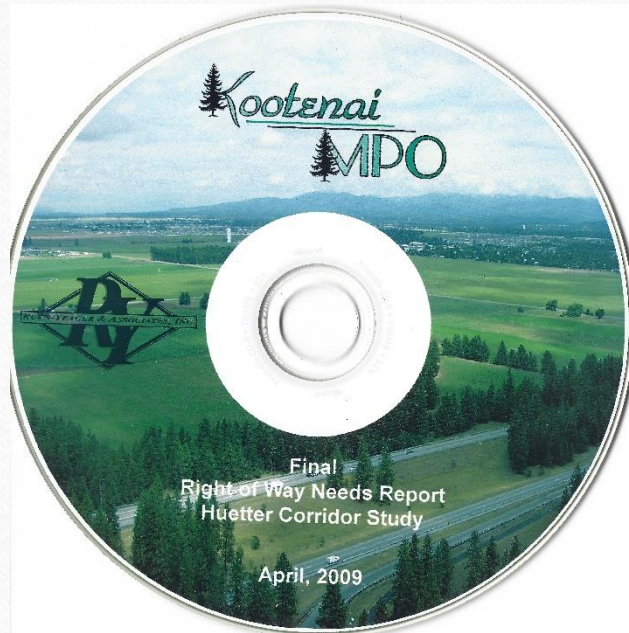
I-90	\$425 Million
Huetter	\$300 Million
POE	\$ 35 Million
KTMC	\$ 5 Million
US 95	\$ 23 Million

\$ 39.4 Million/year

All other local projects:
\$682 Million

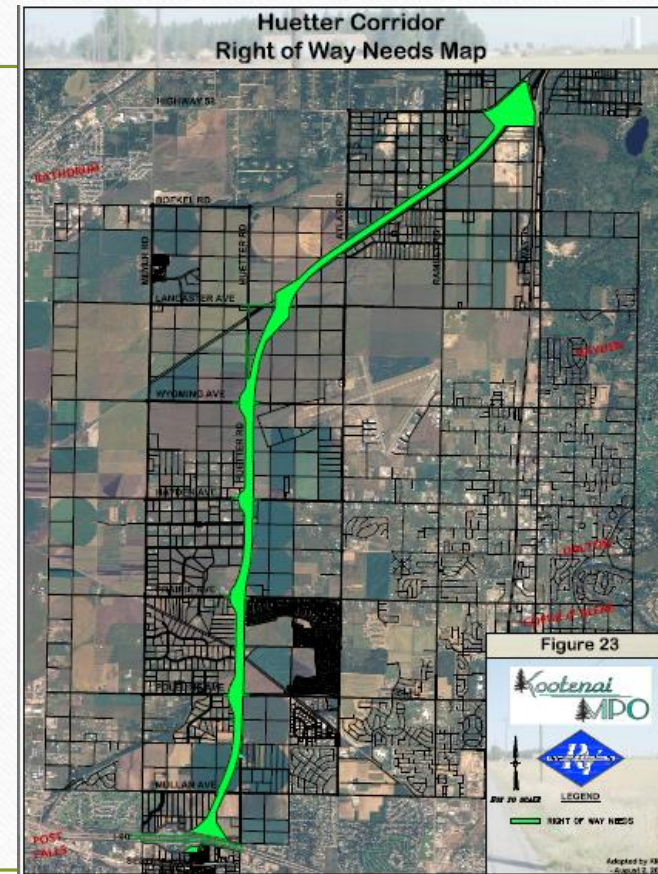
\$34.1 Million/year

Huetter Corridor Alignment Map Update

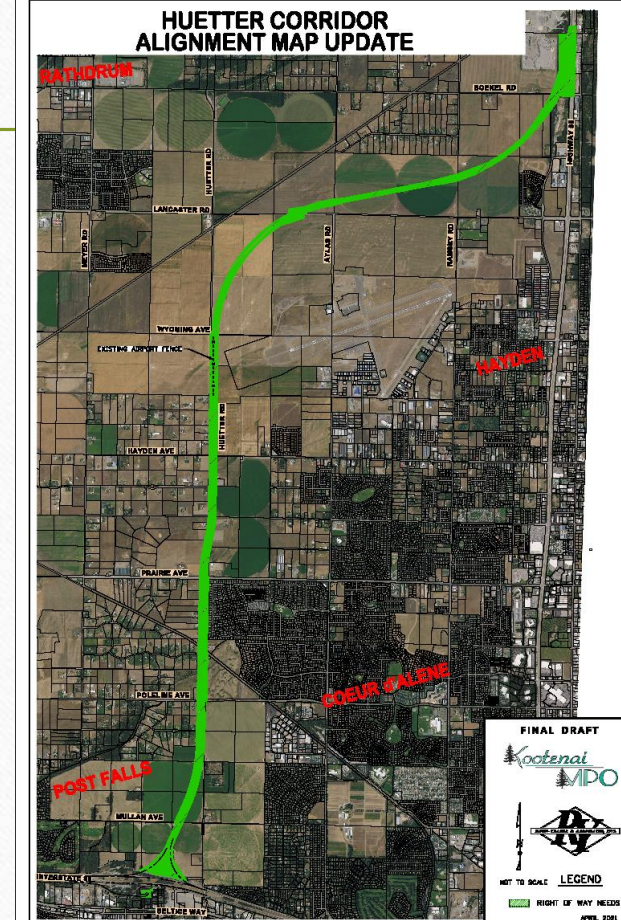
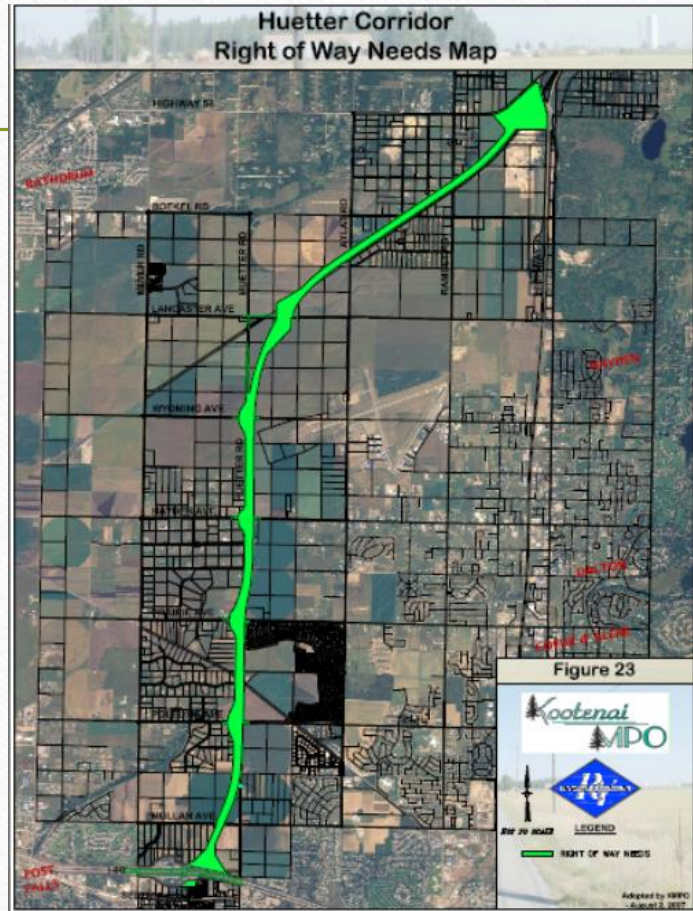


Huetter Corridor Alignment Map Update

From April 22, 2009 Adopted Plan



Huetter Corridor Alignment Map Update



HUETTER CORRIDOR ALIGNMENT MAP UPDATE



7A - Pkt 03-2107



RUEB-YEAGER & ASSOCIATES

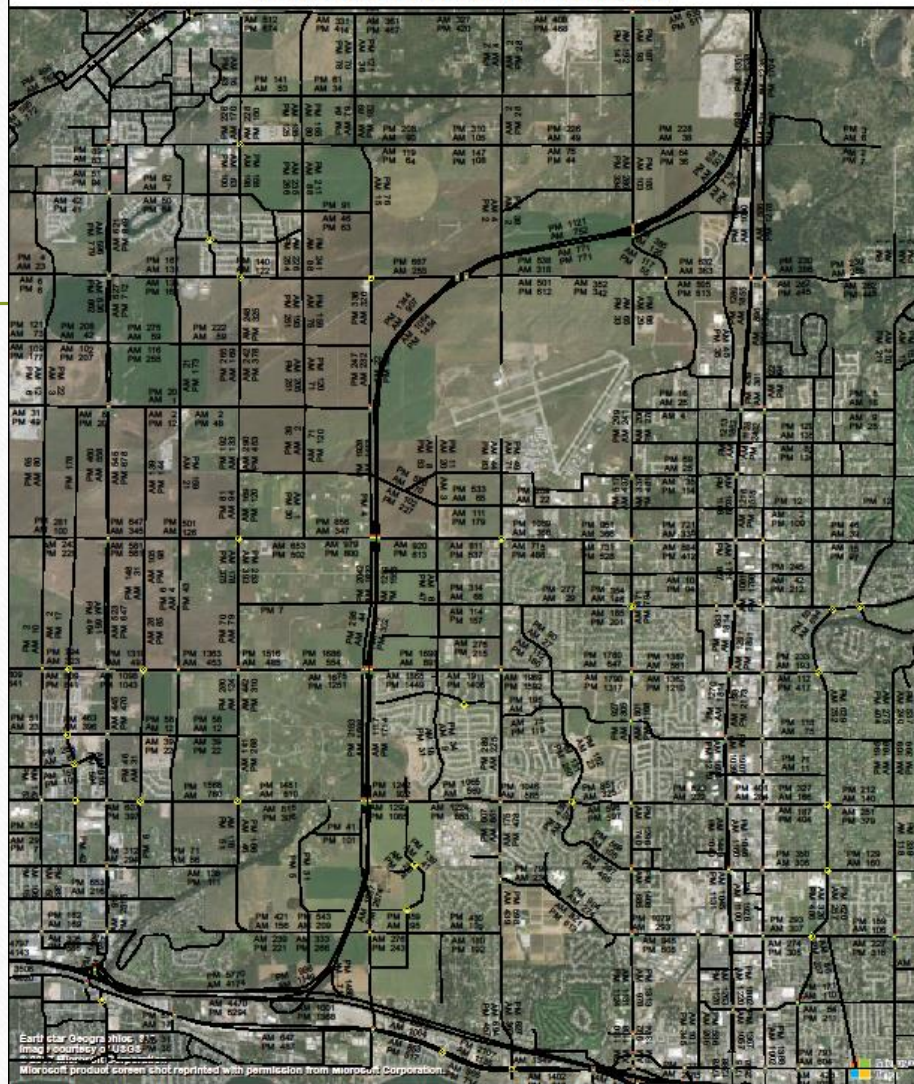
FY2021-8.1

HUETTER CORRIDOR
ALIGNMENT MAP UPDATE
KOOTENAI COUNTY

COUNTY	KEUJEN
KEY NUMBER	2019
EXHIBIT 1	



Huettner Corridor Update 2040 AM & PM Peak Hour Volumes

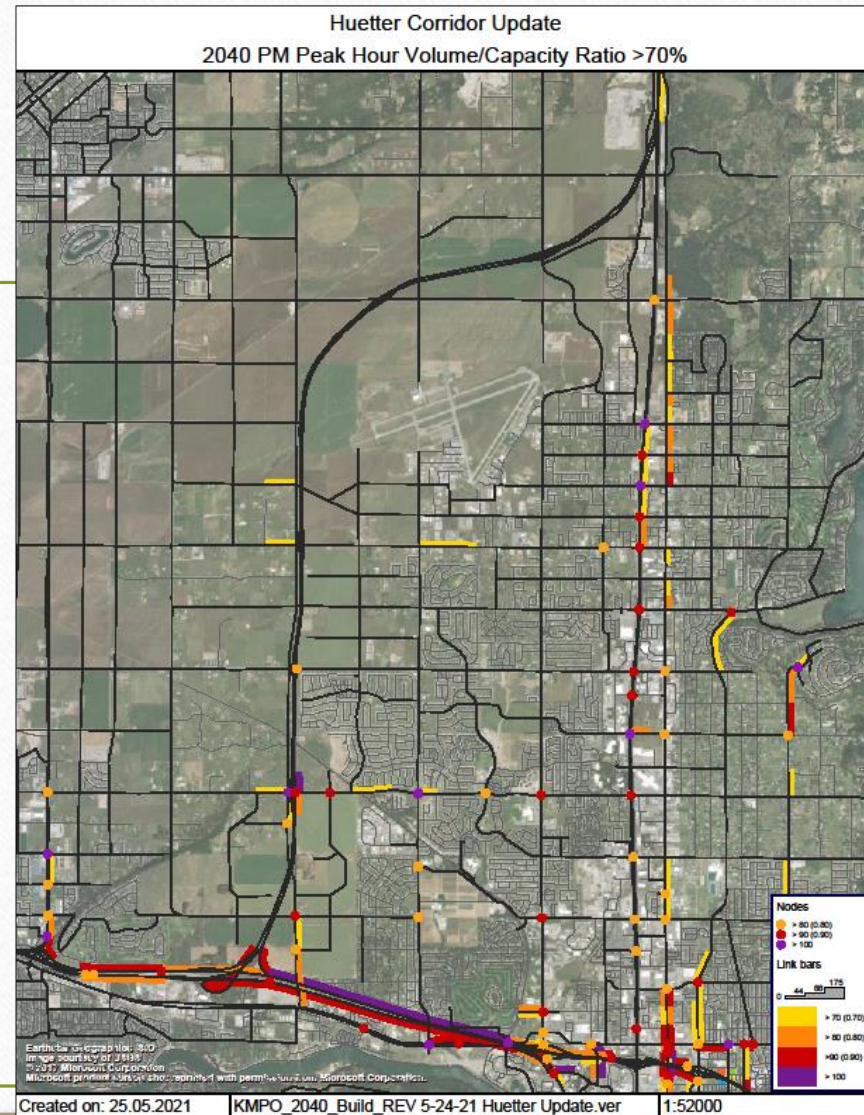


Created on: 25.05.2021

KMPO_2040_Build_REV 5-24-21 Huettner Update.ver

1:52000

Travel Demand Into the Future



Huetter Corridor Alignment Map Update

2040 Travel Forecasts

Huetter Corridor

North/South Roadways

Huetter Bypass	2040 PM PK HR Volumes	
	Northbound	Southbound
I90 to Poleline	2617	2314
Poleline to Prairie	1842	2115
Prairie to Hayden	1510	2036
Hayden to Wyoming	1374	1970
Wyoming to Lancaster	1374	1372
Lancaster to Ramsey	769	1087
Ramsey to US 95	739	665
Average	1461	1651

Huetter Corridor Alignment Map Update

2040 Travel Forecasts

I-90 and SH 53

2040 PM PK HR Volumes						
I90	Westbound			Eastbound		
	With Huetter	No Huetter	% Change with Bypass	With Huetter	No Huetter	% Change with Bypass
NW Blvd to Huetter	6254	6077	3%	5457	5253	4%
SH 41 to Huetter	5755	6077	-5%	5265	5253	0%
Average	6005	6077	-1%	5361	5253	2%

2040 PM PK HR Volumes						
SH 53	Westbound			Eastbound		
	With Huetter	No Huetter	% Change with Bypass	With Huetter	No Huetter	% Change with Bypass
Pleasant View Rd to Rathdrum	418	491	-15%	731	858	-15%
Meyer to US 95	506	669	-24%	494	686	-28%
Average	462	632	-20%	613	739	-21%

Huetter Corridor Alignment Map Update

2040 Travel Forecasts

U.S. 95

US 95	2040 PM PK HR Volumes					
	Northbound			Southbound		
	With Huetter	No Huetter	% Change with Bypass	With Huetter	No Huetter	% Change with Bypass
I90 to Appleway	2556	2681	-5%	1778	1870	-5%
Appleway to Neider	1396	1431	-2%	795	896	-11%
Neider to Kathleen	1828	1979	-8%	1189	1333	-11%
Kathleen to Dalton	1936	2135	-9%	1134	1231	-8%
Dalton to Hanley	1855	1983	-6%	1022	1030	-1%
Hanley to Wilbur	1856	1964	-5%	1019	1059	-4%
Wilbur to Prairie	2172	2270	-4%	1271	1312	-3%
Prairie to Honeysuckle	1903	1843	3%	970	1080	-10%
Honeysuckle to Hayden	1862	1816	3%	822	916	-10%
Hayden to Miles	2557	2634	-3%	971	1095	-11%
Miles to Wyoming	2466	2494	-1%	1239	1437	-14%
Wyoming to Lancaster	2012	2032	-1%	1267	1444	-12%
Lancaster to Boekel	1312	1710	-23%	635	691	-8%
Boekel to Huetter B	960	1311	-27%	690	1038	-34%
Huetter B to SH 53	1699	1311	30%	1355	1038	31%
Average	1891	1968	-4%	1077	1173	-7%

Huetter Corridor Alignment Map Update

2040 Travel Forecasts

SH-41

SH 41	2040 PM PK HR Volumes					
	Northbound			Southbound		
	With Huetter	No Huetter	% Change with Bypass	With Huetter	No Huetter	% Change with Bypass
I90 to Mullan	2620	2907	-10%	1683	2127	-21%
Mullan to 16th	2399	2762	-13%	1226	1757	-30%
16th to Poleline	1475	1486	-1%	1172	1692	-31%
Poleline to Hope	1107	1132	-2%	604	1096	-45%
Hope to Prairie	489	589	-17%	434	892	-51%
Prairie to Hayden	690	836	-17%	477	886	-46%
Hayden to Wyoming	715	957	-25%	467	776	-40%
Wyoming to Lancaster	712	927	-23%	650	905	-28%
Lancaster to Nagel	853	1043	-18%	786	952	-17%
Nagel to Boekel	629	773	-19%	797	975	-18%
Average	1169	1291	-15%	830	1156	-33%

Huetter Corridor Alignment Map Update

2040 Travel Forecasts

Prairie Avenue

East/West Roadways

Prairie Ave	2040 PM PK HR Volumes					
	Westbound			Eastbound		
	With Huetter	No Huetter	% Change with Bypass	With Huetter	No Huetter	% Change with Bypass
US 95 to Ramsey	1439	1574	-9%	1299	1277	2%
Ramsey to Atlas	1849	2010	-8%	1433	1431	0%
Atlas to Huetter	1775	2102	-16%	1465	1484	-1%
Huetter to Meyer	1673	1758	-5%	1245	1368	-9%
Meyer to SH 41	1400	1402	0%	1060	1045	1%
SH 41 to Greensferry	956	933	2%	926	914	1%
Average	1515	1768	-6%	1238	1248	-1%

Huetter Corridor Alignment Map Update

2040 Travel Forecasts

Ramsey Road

Ramsey Rd	2040 PM PK HR Volumes					
	Northbound			Southbound		
	With Huetter	No Huetter	% Change with Bypass	With Huetter	No Huetter	% Change with Bypass
I90 to Appleway	1631	1781	-8%	1186	1204	-1%
Appleway to Kathleen	1384	1548	-11%	1134	1187	-4%
Kathleen to Dalton	1308	1480	-12%	905	982	-8%
Dalton to Hanley	1288	1413	-9%	913	929	-2%
Hanley to Wilbur	1092	1247	-12%	870	936	-7%
Wilbur to Prairie	1173	1246	-6%	1015	1068	-5%
Prairie to Honeysuckle	827	910	-9%	991	1131	-12%
Honeysuckle to Hayden	659	743	-11%	691	712	-3%
Hayden to Miles	437	438	0%	503	550	-9%
Miles to Wyoming	263	259	2%	287	345	-17%
Wyoming to Lancaster	342	378	-10%	175	237	-26%
Lancaster to Huetter Bypass	556	277	101%	214	234	-9%
Huetter Bypass to Boekel	186	277	-33%	221	220	0%
Average	857	923	-1%	700	749	-8%

Huetter Corridor Alignment Map Update

2040 Travel Forecasts

Existing Huetter Road

Huetter Rd	2040 PM PK HR Volumes					
	Northbound			Southbound		
	With Huetter	No Huetter	% Change with Bypass	With Huetter	No Huetter	% Change with Bypass
Seltice to Mullan	1060	1166	-9%	481	561	-14%
Mullan to Poleline	905	1004	-10%	435	449	-3%
Poleline to Prairie	723	881	-18%	783	1216	-36%
Prairie to Hayden	302	343	-12%	265	554	-52%
Hayden to Wyoming	128	289	-56%	11	276	-96%
Wyoming to Lancaster	177	318	-44%	304	477	-36%
Lancaster to Boekel	208	141	48%	130	110	18%
Average	500	592	-14%	344	520	-31%

Huetter Corridor Alignment Map Update

2040 Travel Forecasts

Atlas Road

Atlas Rd	2040 PM PK HR Volumes					
	Northbound			Southbound		
	With Huetter	No Huetter	% Change with Bypass	With Huetter	No Huetter	% Change with Bypass
	747	892	-16%	485	634	-24%
Seltice to Kathleen	559	612	-9%	762	768	-1%
Kathleen to Hanley	547	629	-13%	652	670	-3%
Hanley to Wilbur	245	300	-18%	352	307	15%
Wilbur to Prairie	324	426	-24%	356	335	6%
Prairie to Honeysuckle	240	229	5%	314	343	-8%
Honeysuckle to Hayden	173	213	-19%	362	497	-27%
Average	405	472	-13%	469	508	-6%

Huetter Corridor Alignment Map Update

2040 Travel Forecasts

Meyer Road

2040 PM PK HR Volumes						
	Northbound			Southbound		
	With Huetter	No Huetter	% Change with Bypass	With Huetter	No Huetter	% Change with Bypass
Meyer Rd						
16th to Poleline	230	264	-13%	160	221	-28%
Poleline to Prairie	256	398	-36%	127	193	-34%
Prairie to Hayden	188	355	-47%	203	290	-30%
Hayden to Wyoming	335	381	-12%	127	202	-37%
Wyoming to Lancaster	370	349	6%	258	224	15%
Average	276	349	-20%	175	226	-23%

Huetter Corridor Alignment Map Update

2040 Travel Forecasts

Hanley/Poleline Ave

Hanley/Poleline Ave	2040 PM PK HR Volumes					
	Westbound			Eastbound		
	With Huetter	No Huetter	% Change with Bypass	With Huetter	No Huetter	% Change with Bypass
US 95 to Ramsey	729	709	3%	681	623	9%
Ramsey to Atlas	912	937	-3%	660	515	28%
Atlas to Huetter	1046	1104	-5%	958	795	21%
Huetter to Meyer	1654	1499	10%	490	460	7%
Meyer to SH 41	1072	1216	-12%	446	536	-17%
SH 41 to Greensferry	1019	909	12%	630	607	4%
Average	1072	1062	1%	644	589	9%

FY 2022 Funding And Projects from 2021 funding Package HB-362

Increased Sales Tax Funding for Transportation from 1.5% to 4.5 %

Estimated Revenue in FY 2022	\$84,000,000.00
Distribution:	
Idaho Transportation Department	\$80,000,000.00 ¹
Local Jurisdictions and Highway Districts	\$ 4,000,000.00 ²

Adds \$60,000,000 per year to existing ITD program, but changes purpose from maintenance and preservation to capital expansion (major projects)

¹ ITD capped at \$80,000,000.00 per year – 20 Year Bond estimated at 1.4 Billion

² Locals get revenue above \$80,000,000.00 – Not Bondable