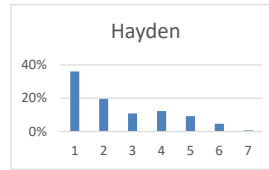
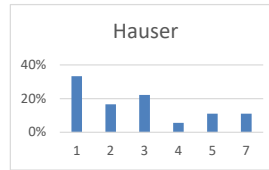
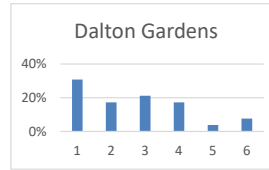
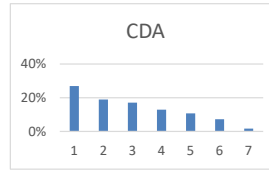
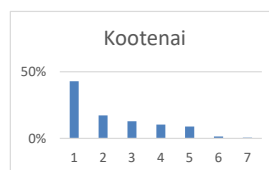
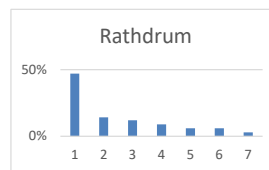
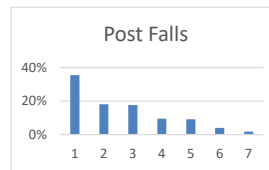
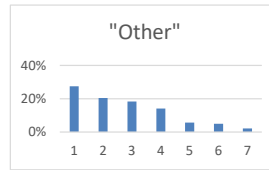


Coordinated planning effort between the County and cities to address growth and open space on the prairie

Row Labels	Count of Plan County-cities growth-open space	Percentage
Coeur d'Alene	1187	
0	53	4%
1	320	27%
2	225	19%
3	203	17%
4	153	13%
5	127	11%
6	86	7%
7	20	2%
Dalton Gardens	52	
0	1	2%
1	16	31%
2	9	17%
3	11	21%
4	9	17%
5	2	4%
6	4	8%
Hauser	18	
1	6	33%
2	3	17%
3	4	22%
4	1	6%
5	2	11%
7	2	11%
Hayden	424	
0	28	7%
1	153	36%
2	83	20%
3	46	11%
4	52	12%
5	39	9%
6	20	5%
7	3	1%
Huetter	1	
3	1	One response "3"
Other (please specify)	142	
0	10	7%
1	39	27%
2	29	20%
3	26	18%
4	20	14%
5	8	6%
6	7	5%
7	3	2%
Post Falls	493	
0	21	4%
1	175	35%
2	89	18%
3	87	18%
4	47	10%
5	45	9%
6	20	4%
7	9	2%
Rathdrum	134	
0	4	3%
1	63	47%
2	19	14%
3	16	12%
4	12	9%
5	8	6%
6	8	6%
7	4	3%
Unincorporated Kootenai County	203	
0	12	6%
1	87	43%
2	35	17%
3	26	13%
4	21	10%
5	18	9%
6	3	1%
7	1	0%
(blank)	3	n/a
Grand Total	2657	

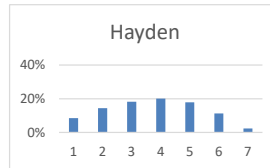
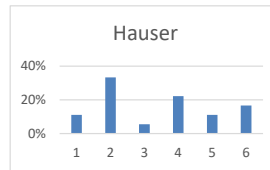
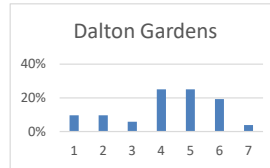
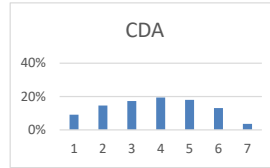


No chart

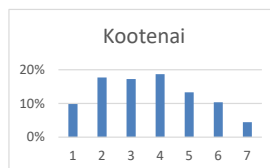
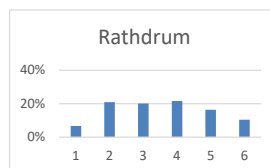
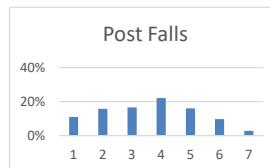
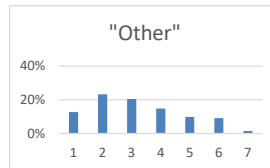


Water Conservation – encourage the adoption of regional Model Efficient Irrigation Design Standard for Irrigation Systems recommended by the Idaho Washington Aquifer Collaborative (IWAC) to help protect the aquifer

Row Labels	Count of Water Conservation	Percentage
Coeur d'Alene	1187	
0	57	5%
1	108	9%
2	173	15%
3	206	17%
4	231	19%
5	214	18%
6	155	13%
7	43	4%
Dalton Gardens	52	
0	1	2%
1	5	10%
2	5	10%
3	3	6%
4	13	25%
5	13	25%
6	10	19%
7	2	4%
Hauser	18	
1	2	11%
2	6	33%
3	1	6%
4	4	22%
5	2	11%
6	3	17%
Hayden	424	
0	31	7%
1	36	8%
2	61	14%
3	77	18%
4	85	20%
5	76	18%
6	48	11%
7	10	2%
Huetter	1	7%
1	1	One response "1"
Other (please specify)	142	
0	12	8%
1	18	13%
2	33	23%
3	29	20%
4	21	15%
5	14	10%
6	13	9%
7	2	1%
Post Falls	493	
0	29	6%
1	54	11%
2	78	16%
3	82	17%
4	109	22%
5	79	16%
6	48	10%
7	14	3%
Rathdrum	134	
0	5	4%
1	9	7%
2	28	21%
3	27	20%
4	29	22%
5	22	16%
6	14	10%
Unincorporated Kootenai County	203	
0	17	8%
1	20	10%
2	36	18%
3	35	17%
4	38	19%
5	27	13%
6	21	10%
7	9	4%
(blank)	3	n/a
Grand Total	2657	

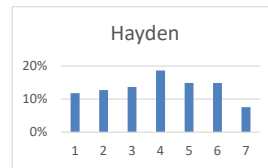
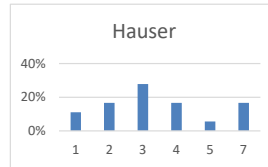
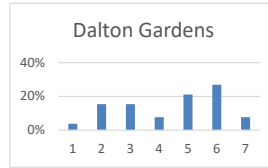
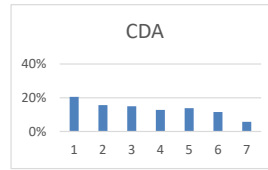


No chart

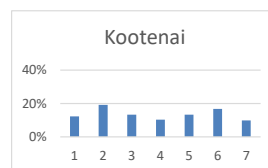
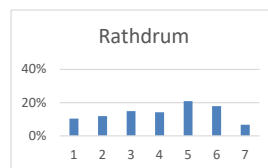
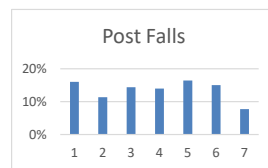
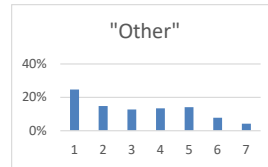


Housing Options and Possible Code Amendments to allow for additional housing choices and incentivize workforce housing and attainable housing

Row Labels	Count of Housing Options	Percentage
Coeur d'Alene	1187	
0	58	5%
1	244	21%
2	186	16%
3	178	15%
4	152	13%
5	164	14%
6	137	12%
7	68	6%
Dalton Gardens	52	
0	1	2%
1	2	4%
2	8	15%
3	8	15%
4	4	8%
5	11	21%
6	14	27%
7	4	8%
Hauser	18	
1	2	11%
2	3	17%
3	5	28%
4	3	17%
5	1	6%
7	4	17%
Hayden	424	
0	25	6%
1	50	12%
2	54	13%
3	58	14%
4	79	19%
5	63	15%
6	63	15%
7	32	8%
Huetter	1	
4	1	One response "4"
Other (please specify)	142	
0	12	8%
1	35	25%
2	21	15%
3	18	13%
4	19	13%
5	20	14%
6	11	8%
7	6	4%
Post Falls	493	
0	25	5%
1	79	16%
2	56	11%
3	71	14%
4	69	14%
5	81	16%
6	74	15%
7	38	8%
Rathdrum	134	
0	4	3%
1	14	10%
2	16	12%
3	20	15%
4	19	14%
5	28	21%
6	24	18%
7	9	7%
Unincorporated Kootenai County	203	
0	10	5%
1	25	12%
2	39	19%
3	27	13%
4	21	10%
5	27	13%
6	34	17%
7	20	10%
(blank)	3	n/a
Grand Total	2657	

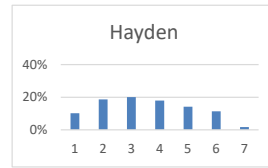
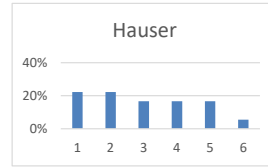
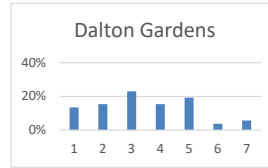
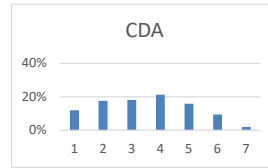


No chart

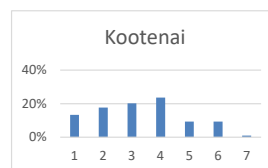
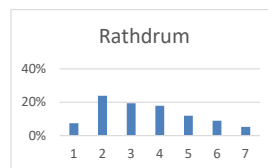
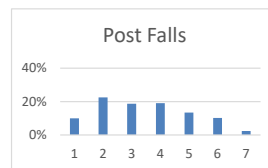
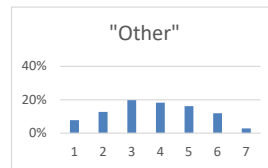


Transportation Projects to address regional transportation challenges and needs

Row Labels	Count of Transportation Projects	Percentage
Coeur d'Alene	1187	
0	46	4%
1	142	12%
2	209	18%
3	215	18%
4	252	21%
5	188	16%
6	112	9%
7	23	2%
Dalton Gardens	52	
0	2	4%
1	7	13%
2	8	15%
3	12	23%
4	8	15%
5	10	19%
6	2	4%
7	3	6%
Hauser	18	
1	4	22%
2	4	22%
3	3	17%
4	3	17%
5	3	17%
6	1	6%
Hayden	424	
0	26	6%
1	43	10%
2	79	19%
3	85	20%
4	76	18%
5	60	14%
6	48	11%
7	7	2%
Huetter	1	
5	1	One response "5"
Other (please specify)	142	
0	15	11%
1	11	8%
2	18	13%
3	28	20%
4	26	18%
5	23	16%
6	17	12%
7	4	3%
Post Falls	493	
0	19	4%
1	49	10%
2	111	23%
3	92	19%
4	94	19%
5	66	13%
6	50	10%
7	12	2%
Rathdrum	134	
0	7	5%
1	10	7%
2	32	24%
3	26	19%
4	24	18%
5	16	12%
6	12	9%
7	7	5%
Unincorporated Kootenai County	203	
0	11	5%
1	27	13%
2	36	18%
3	41	20%
4	48	24%
5	19	9%
6	19	9%
7	2	1%
(blank)	3	n/a
Grand Total	2657	

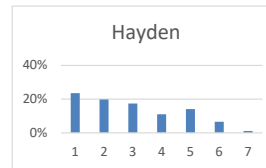
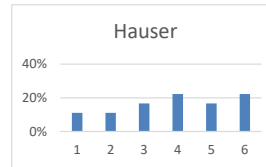
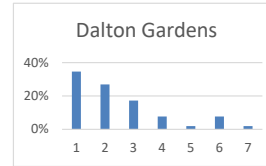
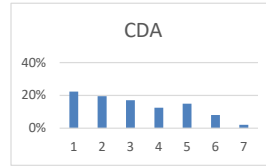


No chart

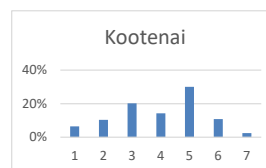
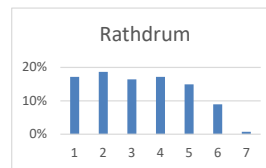
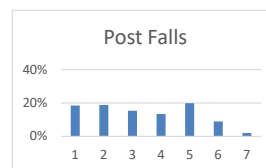
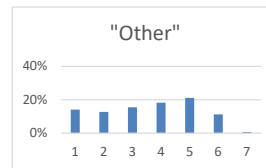


School Impacts – planning for growth and school needs

Row Labels	Count of School Impacts	Percentage
Coeur d'Alene	1187	
0	40	3%
1	265	22%
2	232	20%
3	203	17%
4	148	12%
5	178	15%
6	96	8%
7	25	2%
Dalton Gardens	52	
0	1	2%
1	18	35%
2	14	27%
3	9	17%
4	4	8%
5	1	2%
6	4	8%
7	1	2%
Hauser	18	
1	2	11%
2	2	11%
3	3	17%
4	4	22%
5	3	17%
6	4	22%
Hayden	424	
0	26	6%
1	100	24%
2	84	20%
3	74	17%
4	47	11%
5	60	14%
6	28	7%
7	5	1%
Huetter	1	
2	1	One Response "2"
Other (please specify)	142	
0	9	6%
1	20	14%
2	18	13%
3	22	15%
4	26	18%
5	30	21%
6	16	11%
7	1	1%
Post Falls	493	
0	15	3%
1	91	18%
2	93	19%
3	76	15%
4	66	13%
5	98	20%
6	44	9%
7	10	2%
Rathdrum	134	
0	8	6%
1	23	17%
2	25	19%
3	22	16%
4	23	17%
5	20	15%
6	12	9%
7	1	1%
Unincorporated Kootenai County	203	
0	11	5%
1	13	6%
2	21	10%
3	41	20%
4	29	14%
5	61	30%
6	22	11%
7	5	2%
(blank)	3	n/a
Grand Total	2657	

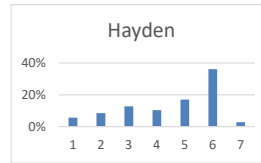
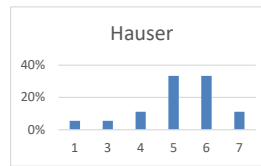
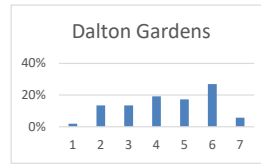
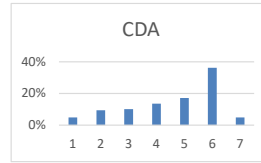


No chart



Legislative Actions that can aid in growth management

Row Labels	Count of Legislate growth management	Percentage
Coeur d'Alene	1186	
0	44	4%
1	58	5%
2	112	9%
3	120	10%
4	161	14%
5	204	17%
6	430	36%
7	57	5%
(blank)		
Dalton Gardens	52	
0	1	2%
1	1	2%
2	7	13%
3	7	13%
4	10	19%
5	9	17%
6	14	27%
7	3	6%
Hauser	18	
1	1	6%
3	1	6%
4	2	11%
5	6	33%
6	6	33%
7	2	11%
Hayden	424	
0	29	7%
1	24	6%
2	36	8%
3	54	13%
4	44	10%
5	72	17%
6	153	36%
7	12	3%
Huetter	1	
6	1	One response "6"
Other (please specify)	142	
0	14	10%
1	8	6%
2	9	6%
3	9	6%
4	14	10%
5	30	21%
6	51	36%
7	7	5%
Post Falls	493	
0	26	5%
1	22	4%
2	45	9%
3	60	12%
4	65	13%
5	76	15%
6	184	37%
7	15	3%
Rathdrum	134	
0	6	4%
1	6	4%
2	6	4%
3	17	13%
4	17	13%
5	29	22%
6	50	37%
7	3	2%
Unincorporated Kootenai County	203	
0	14	7%
1	14	7%
2	22	11%
3	18	9%
4	25	12%
5	25	12%
6	72	35%
7	13	6%
(blank)	3	n/a
Grand Total	2656	



No chart

