

Citylink

2018-2019 Comparison

	Nov'18	Dec'18	Jan'19	Feb'19	Mar'19	Apr'19	May'19	June'19	July'19	Aug'19	Sept'19	Oct'19	Nov'19
A Route	4,425	3,825	4,826	4,641	4,683	5,114	4,689	4,099	4,485	4,297	4,223	4,882	4,135
B Route	3,343	3,125	3,896	3,572	3,966	4,145	3,996	3,684	3,998	4,028	3,799	4,339	3,781
C Route	3,114	2,687	3,263	2,905	3,211	3,411	3,574	3,356	3,664	3,606	3,105	3,836	3,291
North	10,882	9,637	11,985	11,118	11,860	12,670	12,259	11,139	12,147	11,931	11,127	13,057	11,207
Link	5,568	5,821	6,099	5,269	5,910	5,368	5,379	5,097	5,379	5,137	4,861	5,479	5,301
Rural	3,570	3,248	4,290	3,351	3,611	3,454	3,417	3,323	3,470	3,570	3,765	3,905	3,385
South	9,138	9,069	10,389	8,620	9,521	8,822	8,796	8,420	8,849	8,707	8,626	9,384	8,686
Citylink Para	1,171	1,149	1,280	1,210	1,328	1,400	1,293	1,204	1,285	1,337	1,206	1,463	1,387
KH	1,978	1,837	2,420	2,419	2,420	2,146	2,272	1,953	1,937	2,033	2,053	2,161	1,962
Para	3,149	2,986	3,700	3,629	3,748	3,546	3,565	3,157	3,222	3,370	3,259	3,624	3,349
Totals	23,169	21,692	26,074	23,367	25,129	25,038	24,620	22,716	24,218	24,008	23,012	26,065	23,242

Citylink

2017-2019 Total Ridership Comparison

NORTH

	Jan	Feb	Mar	Apr	May	Jun	Jul	Aug	Sep	Oct	Nov	Dec
2017	11,318	11,920	14,171	12,483	11,528	10,848	10,697	10,572	7,397	9,297	9,764	10,299
2018	11,647	11,369	11,756	11,573	12,518	11,919	11,983	12,614	10,542	13,036	10,882	9,637
2019	11,985	11,118	11,860	12,670	12,259	11,139	12,147	11,931	11,127	13,057	11,207	

SOUTH

	Jan	Feb	Mar	Apr	May	Jun	Jul	Aug	Sep	Oct	Nov	Dec
2017	13,884	13,301	14,638	13,225	14,482	13,248	13,757	13,632	12,393	11,592	10,659	10,414
2018	11,403	10,383	11,400	10,630	10,362	9,614	9,886	9,708	9,600	10,162	9,138	9,069
2019	10,389	8,620	9,521	8,822	8,796	8,420	8,849	8,707	8,626	9,384	8,686	

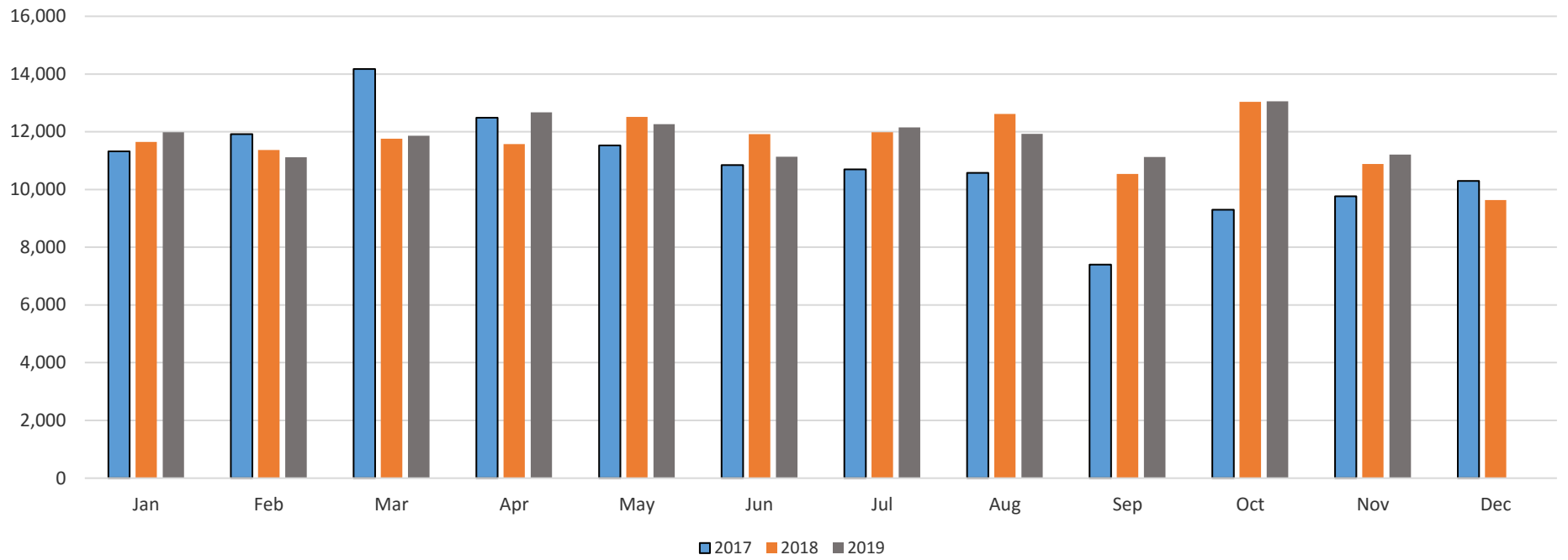
COMBINED

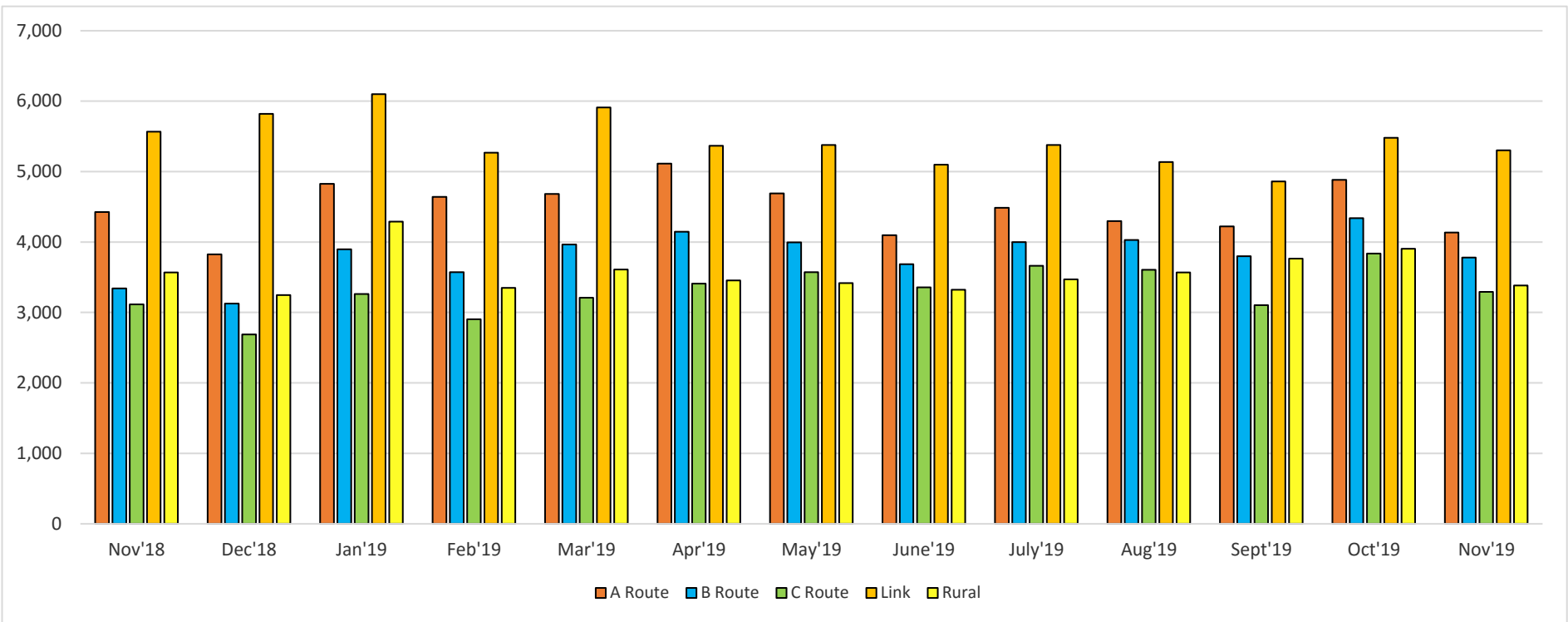
	Jan	Feb	Mar	Apr	May	Jun	Jul	Aug	Sep	Oct	Nov	Dec
2017	25,202	25,221	28,809	25,708	26,010	24,096	24,454	24,204	19,790	20,889	20,423	20,713
2018	23,050	21,752	23,156	22,203	22,880	21,533	21,869	22,322	20,142	23,198	20,020	18,706
2019	22,374	19,738	21,381	21,492	21,055	19,559	20,996	20,638	19,753	22,441	19,893	

PARATRANSIT

	Jan	Feb	Mar	Apr	May	Jun	Jul	Aug	Sep	Oct	Nov	Dec
2017	3,107	2,683	3,584	3,172	3,455	3,280	3,117	3,592	3,078	3,220	3,038	2,959
2018	3,110	3,056	3,159	3,035	3,165	2,952	3,038	3,233	2,960	3,253	3,149	2,986
2019	3,700	3,629	3,748	3,546	3,565	3,157	3,222	3,370	3,259	3,624	3,349	

Fixed Route Yearly Citylink North





Fixed Route Yearly Comparison Combined

