

SECTION 4

Future Conditions

This section provides an analysis of potential transportation demand based on future population and employment growth and transportation system changes. The impacts of projected growth and potential improvements to the existing transportation system are presented below.

Projected Future Conditions Analysis

As described in Section 2, population growth and transportation improvements are input into the regional travel demand model to create a projection of future congested roadways and intersections. These projections are conducted for a “2030 No-Build” scenario, which assumes that no changes will be made to the transportation network; and a “2030 Build” scenario, which incorporates transportation projects that are expected to be constructed by 2030.

The projected future conditions of roadways and intersections are evaluated using a simplified volume to capacity ratio estimate (see Section 3). These estimates are not based on the same Highway Capacity Manual calculation used to develop detailed intersection levels of service. Therefore, the volume-to-capacity ratios reported by the travel demand model should only be used in comparison with one another and not used to compare with volume-to-capacity ratios calculated by the Highway Capacity Manual procedures.

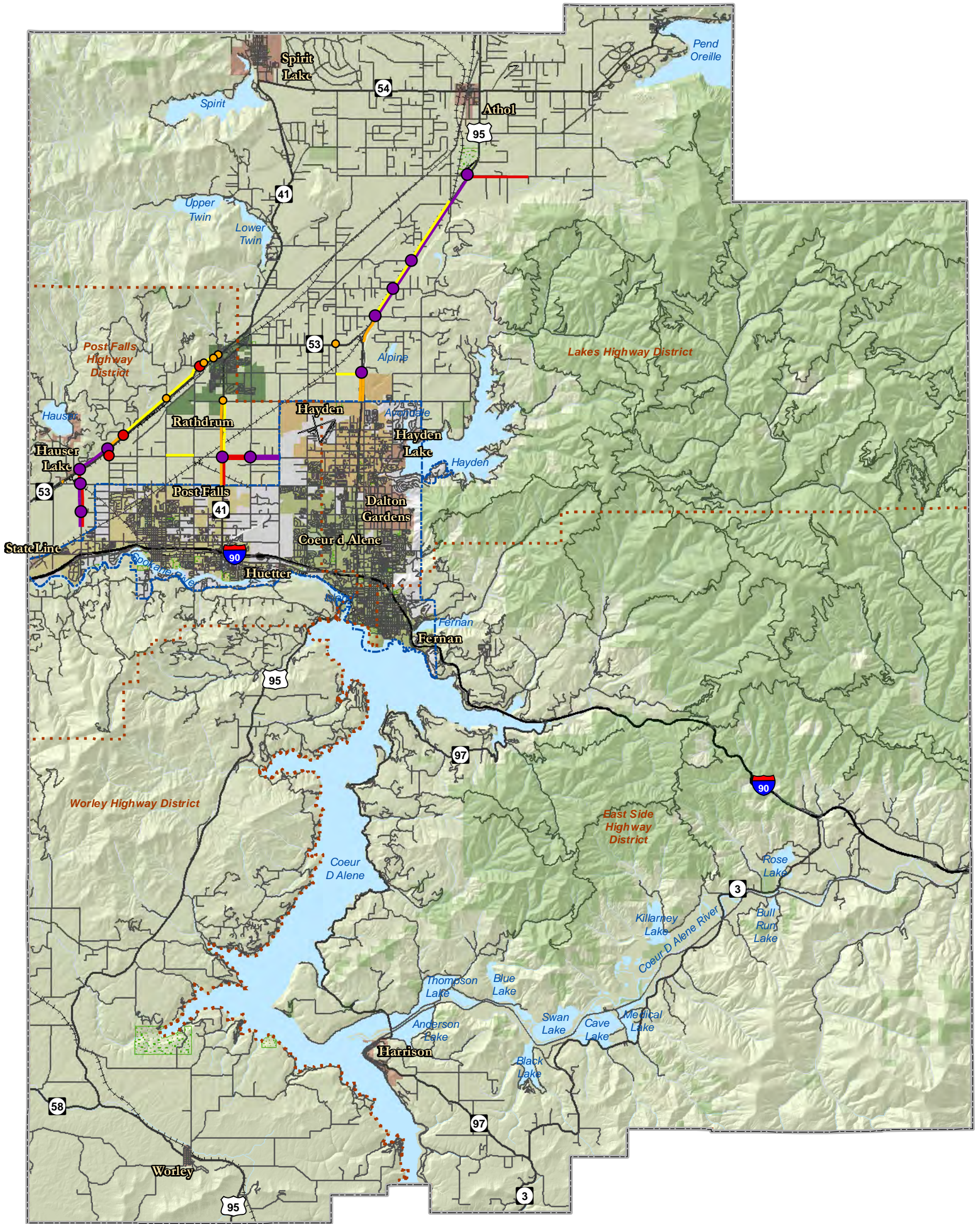
Although a significant number of intersections and roadway segments are identified as deficient in the 2030 No Build and 2030 Build, this does not necessarily mean that each of the road segments and intersections identified by the model will become congested beyond their design capacity. Instead, it is a forecast of *relative* potential problem areas.

2030 No-Build Model

While it is unlikely that not one single roadway improvement will be made between the 2007 base year and 2030, the No-Build scenario assumes just that. This allows for a direct comparison of the impacts of future growth on the current street system against the proposed system (2030 Build).

Roadways and intersections projected to be congested in the 2030 No-Build scenario are presented in Figures 4.1 – 4.5. These results are also listed in Tables 4.1 through 4.4.

The 2030 No-Build model VISUM version file used for this MTP update is 2030 KMPO Build Full Run11F 11-19-09.ver.



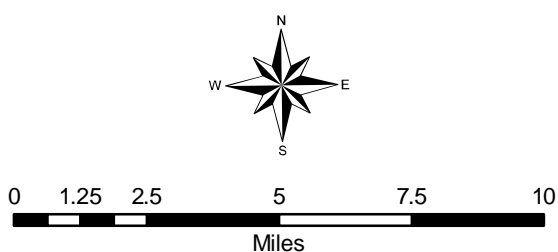
**FUTURE CONDITIONS 2030 NO BUILD
AM PEAK LEVEL OF SERVICE, KOOTENAI COUNTY**

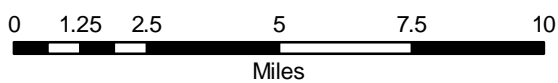
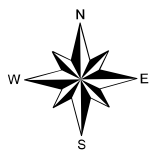
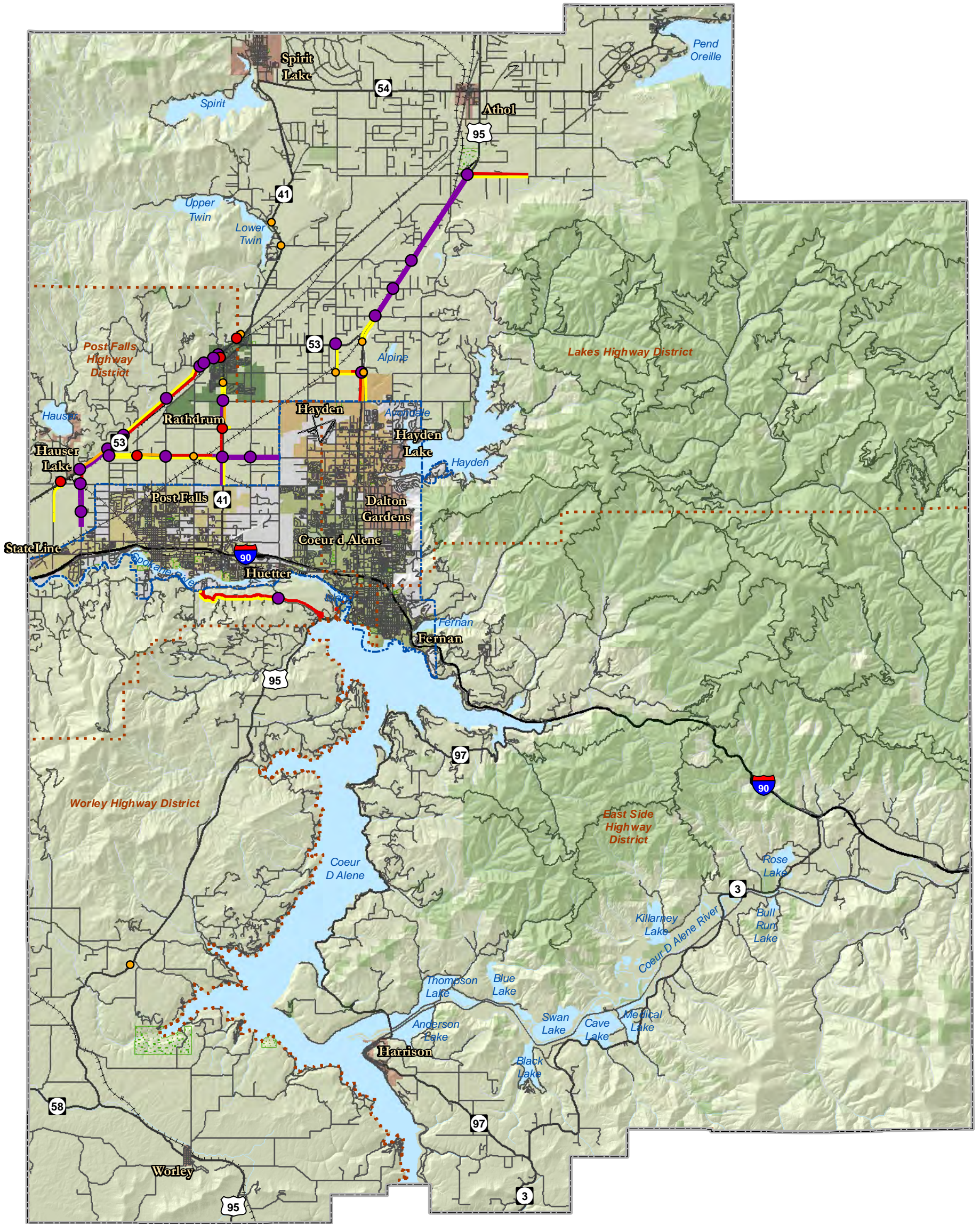
Link & Node V/C Ratios

- Level C - > 70%
- Level D - > 80%
- Level E - > 90%
- Level F - > 100%
- > 80%
- > 90%
- > 100%

Physical Characteristics

- Highway Districts
- County Boundary
- Interstate
- Urban Area Boundary
- US/State Highways
- National Forests
- Local/Seasonal Roads
- Water Features
- Railroad
- Parks





FUTURE CONDITIONS 2030 NO BUILD PM PEAK LEVEL OF SERVICE, KOOTENAI COUNTY

Link & Node V/C Ratios

- Level C - > 70% ● > 70%
- Level D - > 80% ● > 80%
- Level E - > 90% ● > 90%
- Level F - > 100% ● > 100%

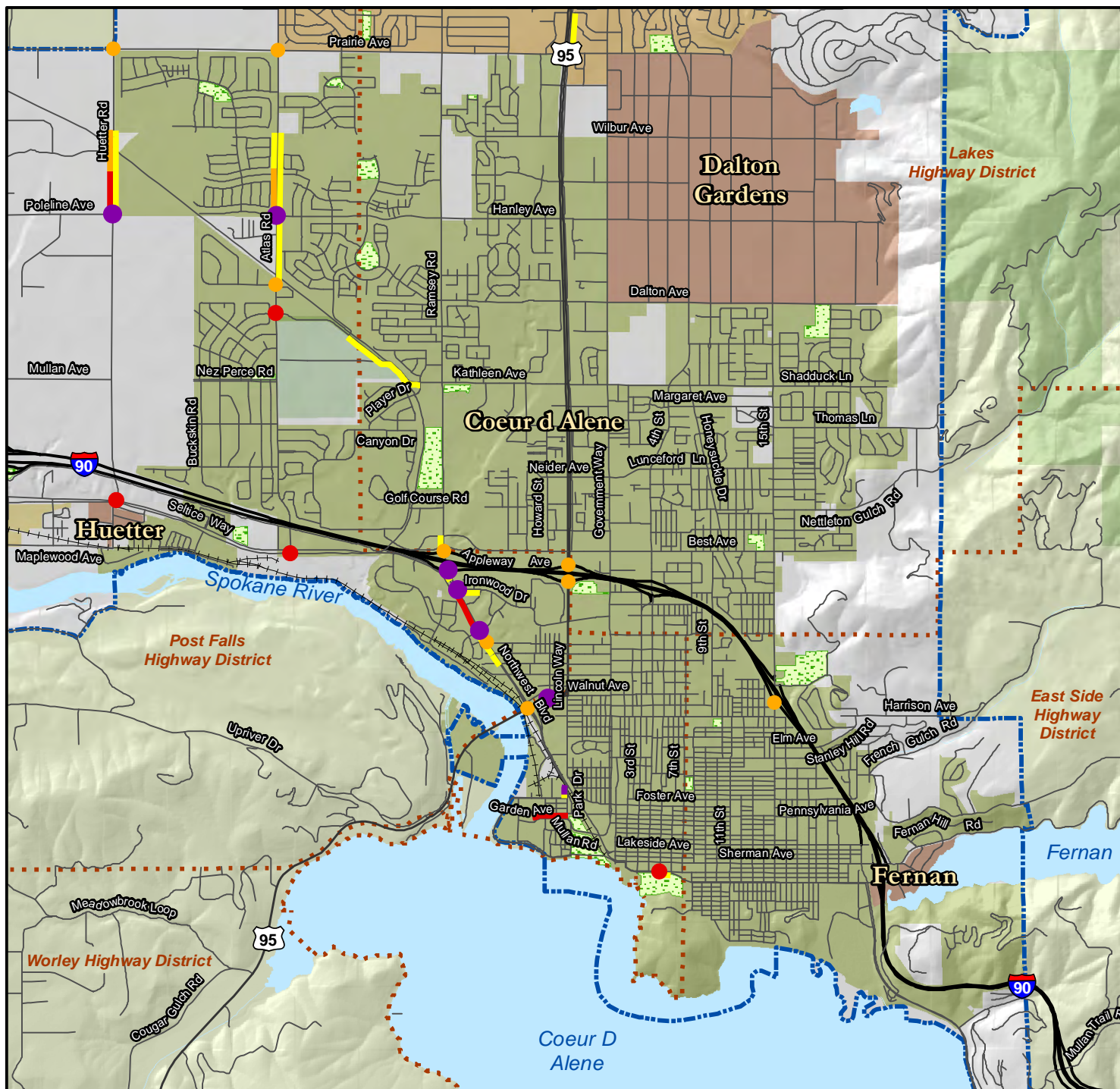
Physical Characteristics

- Highway Districts
- Interstate
- US/State Highways
- Local/Seasonal Roads
- +++ Railroad
- ▭ County Boundary
- ▭ Urban Area Boundary
- ▭ National Forests
- ▭ Water Features
- ▭ Parks

*Data based on best available information. *Data for illustrative purposes only.

Figure 4.2a

KOOTENAI METROPOLITAN TRANSPORTATION PLAN
2010-2035



Kootenai MPO
KOOTENAI METROPOLITAN TRANSPORTATION PLAN
2010-2035

**FUTURE CONDITIONS 2030 NO BUILD
AM PEAK LEVEL OF SERVICE, COEUR D'ALENE AREA**

Link & Node V/C Ratios

- Level C -> 70% > 80%
- Level D -> 80% > 90%
- Level E -> 90% > 100%
- Level F -> 100%

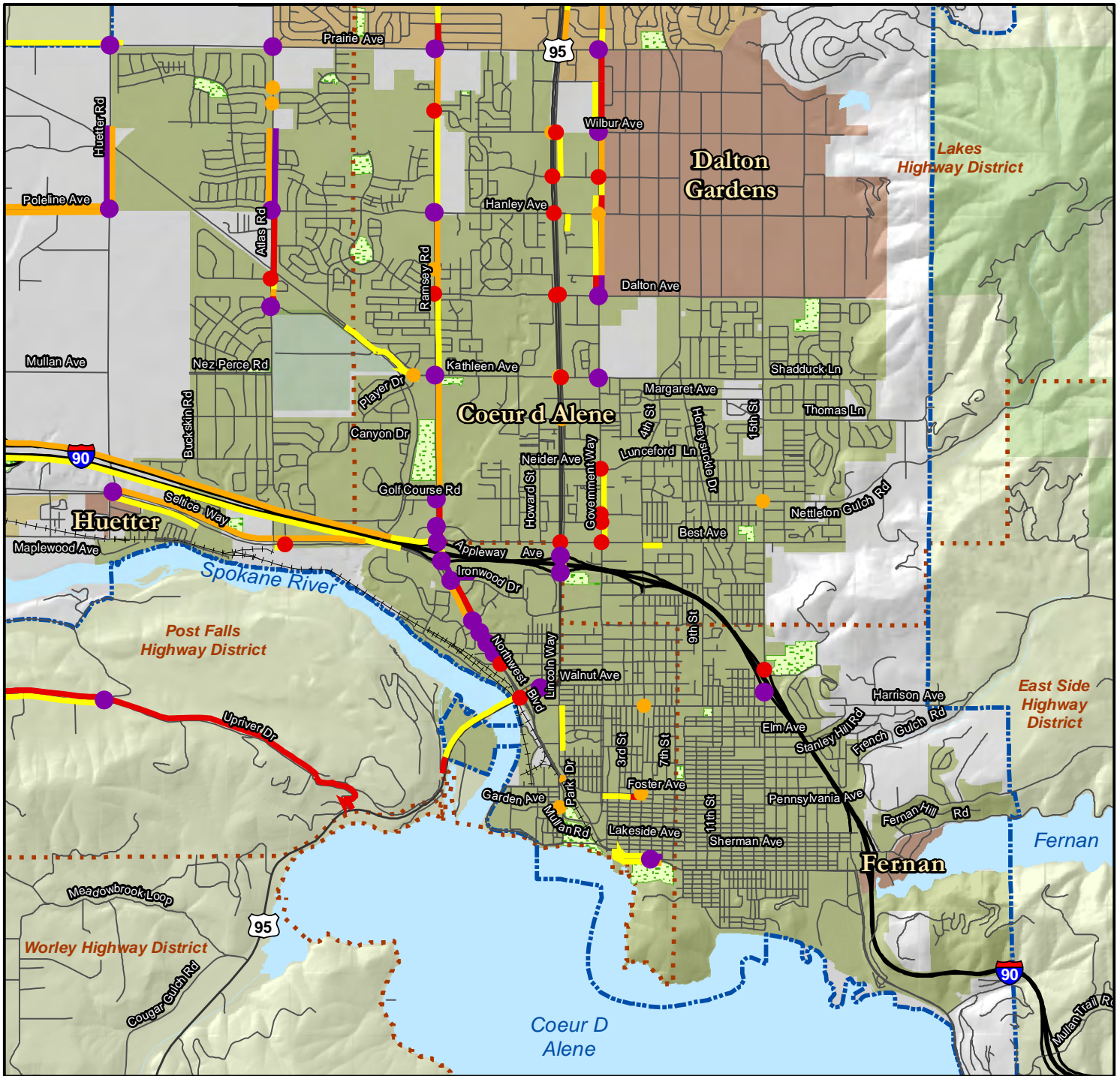
Physical Characteristics

- Highway Districts
- County Boundary
- Interstate
- US/State Highway
- Local/Seasonal Road
- +++ Railroads
- Urban Area Boundary
- National Forests
- Water Features
- Parks

*Data based on best available information. *Data for illustrative purposes only.

Figure 4.2b

KOOTENAI METROPOLITAN TRANSPORTATION PLAN
2010-2035



**FUTURE CONDITIONS 2030 NO BUILD
PM PEAK LEVEL OF SERVICE, COEUR D'ALENE AREA**

Link & Node V/C Ratios

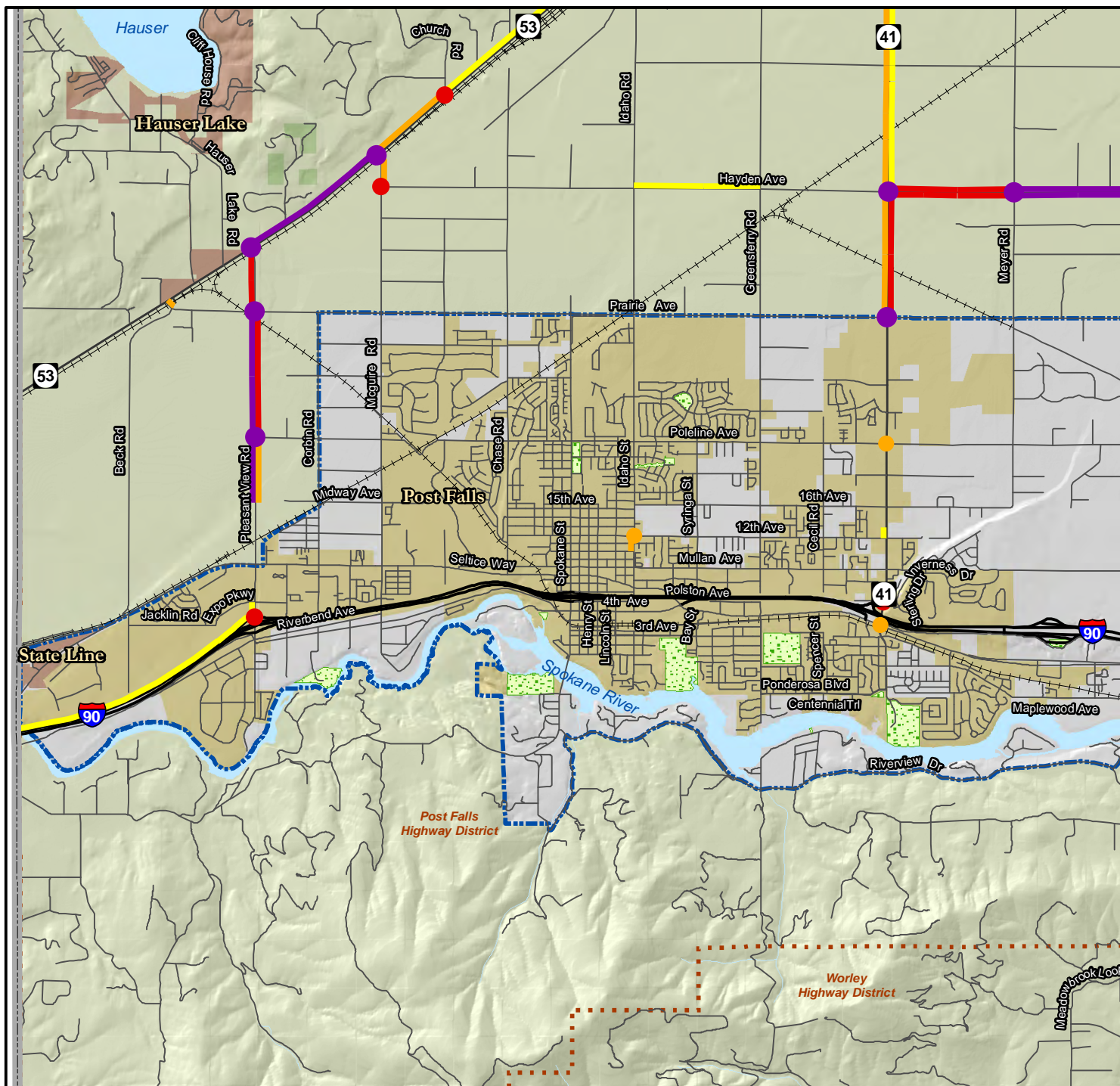
- Level C -> 70%
- Level D -> 80%
- Level E -> 90%
- Level F -> 100%
- > 80%
- > 90%
- > 100%

Physical Characteristics

- Highway Districts
- County Boundary
- Interstate
- US/State Highway
- Local/Seasonal Road
- Railroads
- Urban Area Boundary
- National Forests
- Water Features
- Parks

*Data based on best available information. *Data for illustrative purposes only.

KOOTENAI METROPOLITAN TRANSPORTATION PLAN
2010-2035



KOOTENAI METROPOLITAN TRANSPORTATION PLAN
2010-2035

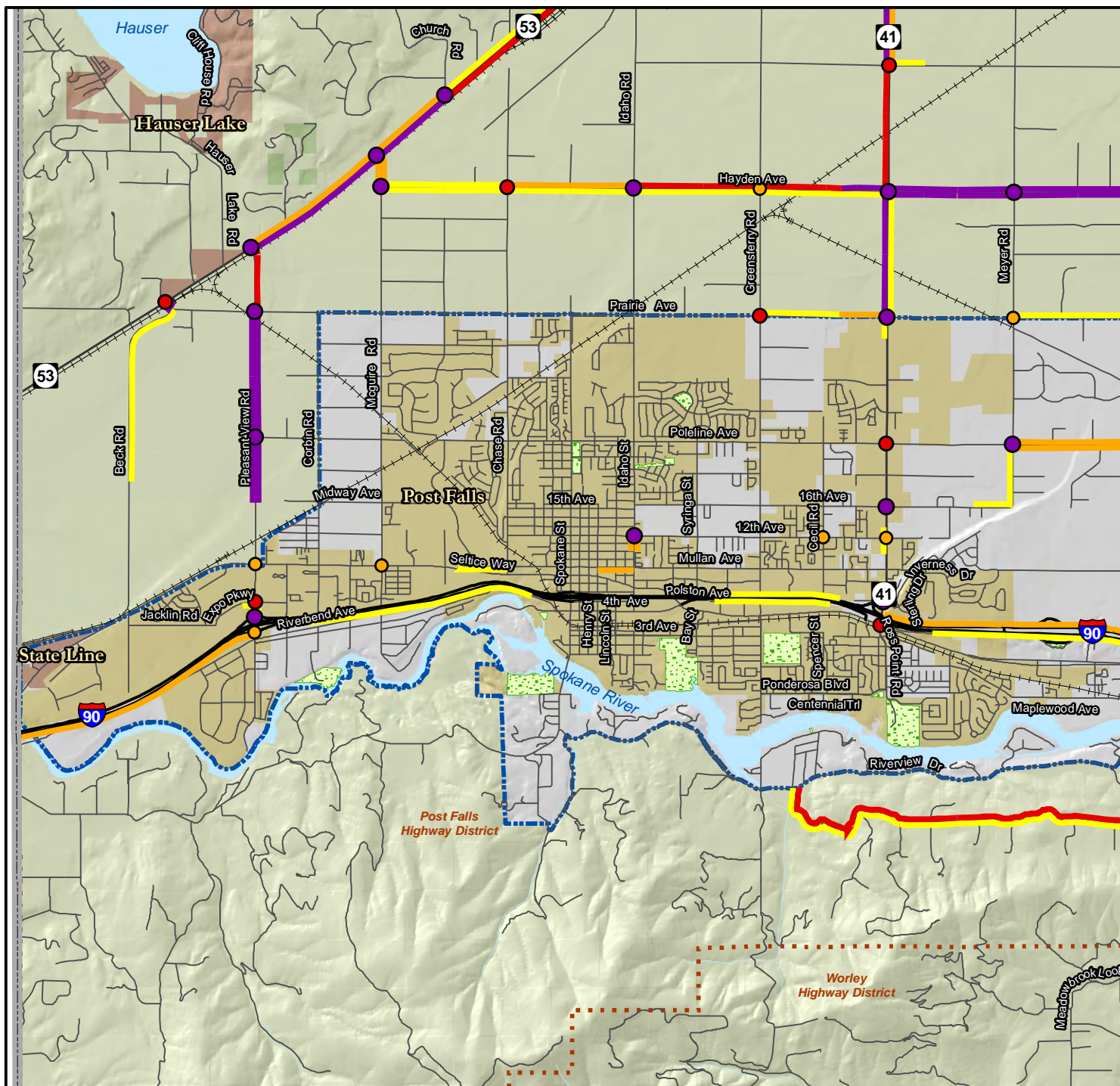
FUTURE CONDITIONS 2030 NO BUILD AM PEAK LEVEL OF SERVICE, POST FALLS AREA

Link & Node V/C Ratios		Physical Characteristics	
Yellow line	Level C -> 70%	Orange circle	> 80%
Orange line	Level D -> 80%	Red circle	> 90%
Red line	Level E -> 90%	Purple circle	> 100%
Purple line	Level F -> 100%	Orange dashed box	Highway Districts
		Grey outline	County Boundary
		Blue dashed box	Urban Area Boundary
		Thick black line	Interstate
		Thin black line	US/State Highway
		Thin grey line	Local/Seasonal Road
		Black line with cross-ticks	Railroads
		Green shaded area	National Forests
		Blue shaded area	Water Features
		Green checkered area	Parks

*Data based on best available information. *Data for illustrative purposes only.

Figure 4.3b

KOOTENAI METROPOLITAN TRANSPORTATION PLAN
2010-2035



0 0.2 0.4 0.8 1.2 1.6
Miles

KOOTENAI METROPOLITAN TRANSPORTATION PLAN
2010-2035

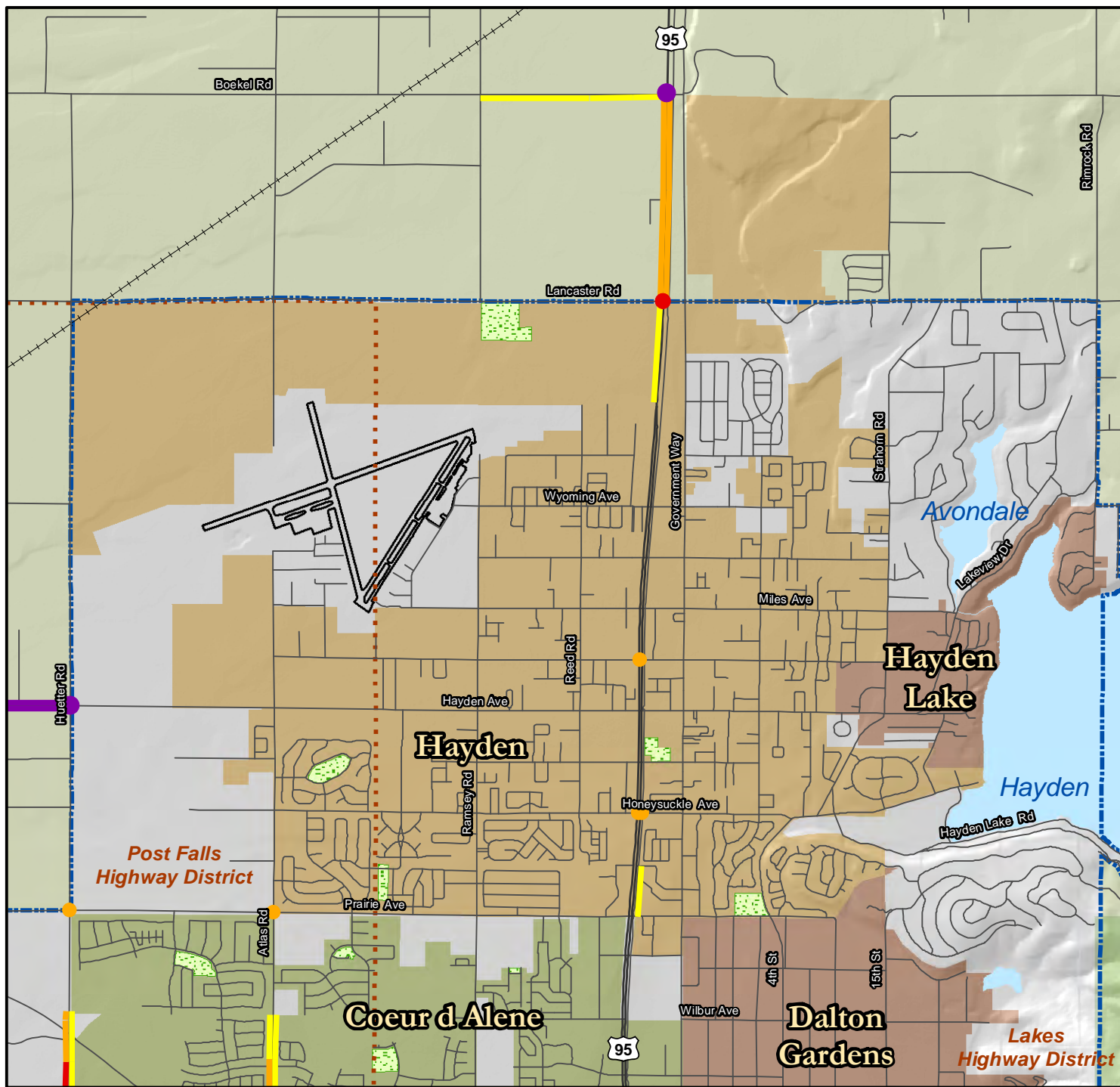
FUTURE CONDITIONS 2030 NO BUILD PM PEAK LEVEL OF SERVICE, POST FALLS AREA

Link & Node V/C Ratios		Physical Characteristics	
— Level C -> 70%	● > 80%	 Highway Districts	 County Boundary
— Level D -> 80%	● > 90%	 Interstate	 Urban Area Boundary
— Level E -> 90%	● > 100%	 US/State Highway	 National Forests
— Level F -> 100%		 Local/Seasonal Road	 Water Features
		 Railroads	 Parks

*Data based on best available information. *Data for illustrative purposes only.

Figure 4.4a

KOOTENAI METROPOLITAN TRANSPORTATION PLAN
2010-2035



Kootenai MPO
KOOTENAI METROPOLITAN TRANSPORTATION PLAN
2010-2035

**FUTURE CONDITIONS 2030 NO BUILD
AM PEAK LEVEL OF SERVICE, HAYDEN AREA**

Link & Node V/C Ratios

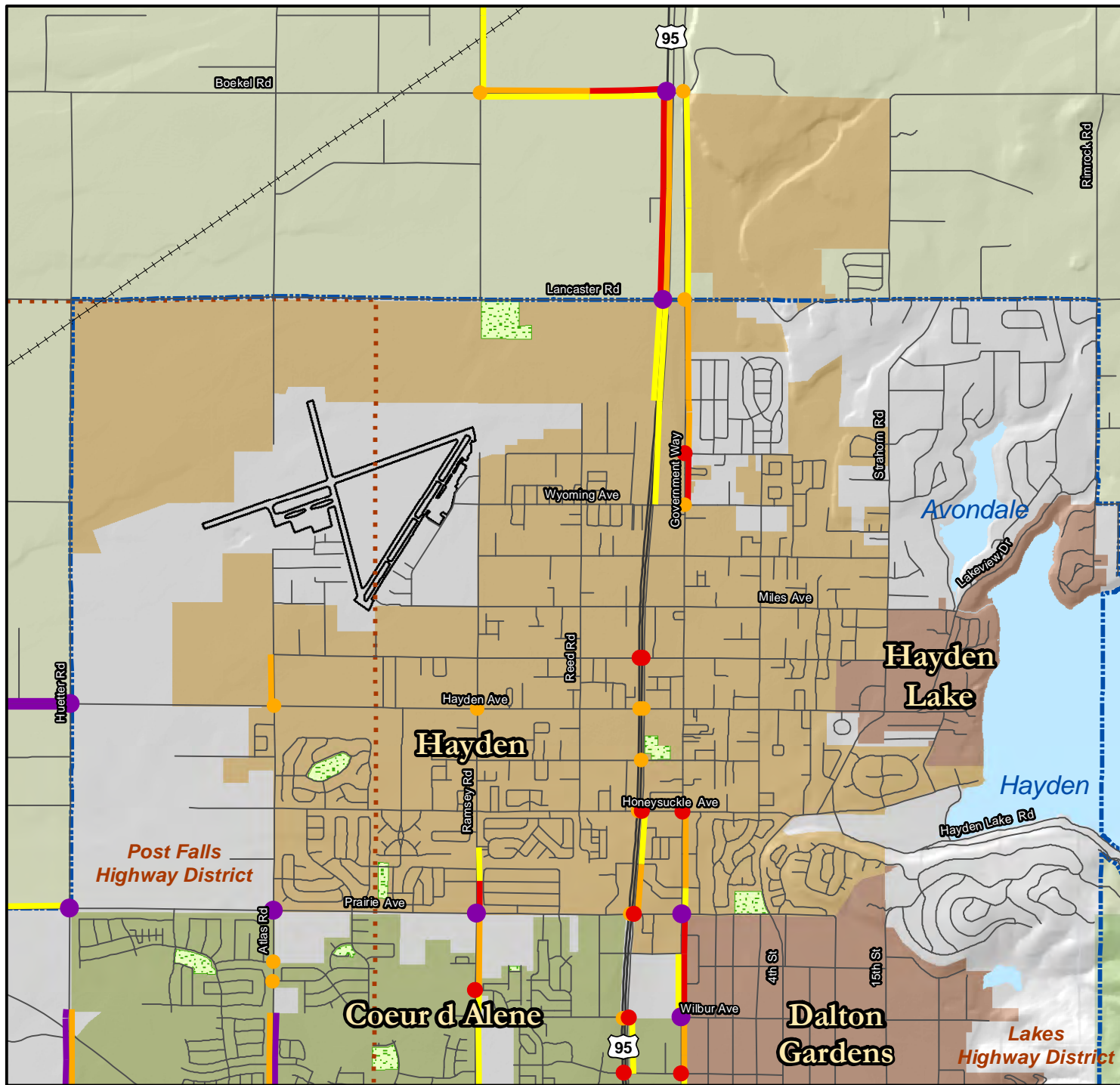
- Level C -> 70% > 80%
- Level D -> 80% > 90%
- Level E -> 90% > 100%
- Level F -> 100%

Physical Characteristics

- Highway Districts
- County Boundary
- Interstate
- US/State Highway
- Local/Seasonal Road
- Railroads
- Urban Area Boundary
- National Forests
- Water Features
- Parks

*Data based on best available information. *Data for illustrative purposes only.

KOOTENAI METROPOLITAN TRANSPORTATION PLAN
2010-2035



Kootenai MPO
KOOTENAI METROPOLITAN TRANSPORTATION PLAN
2010-2035

**FUTURE CONDITIONS 2030 NO BUILD
PM PEAK LEVEL OF SERVICE, HAYDEN AREA**

Link & Node V/C Ratios

- Yellow line: Level C -> 70%
- Orange line: Level D -> 80%
- Red line: Level E -> 90%
- Purple line: Level F -> 100%
- Yellow circle: > 80%
- Red circle: > 90%
- Purple circle: > 100%

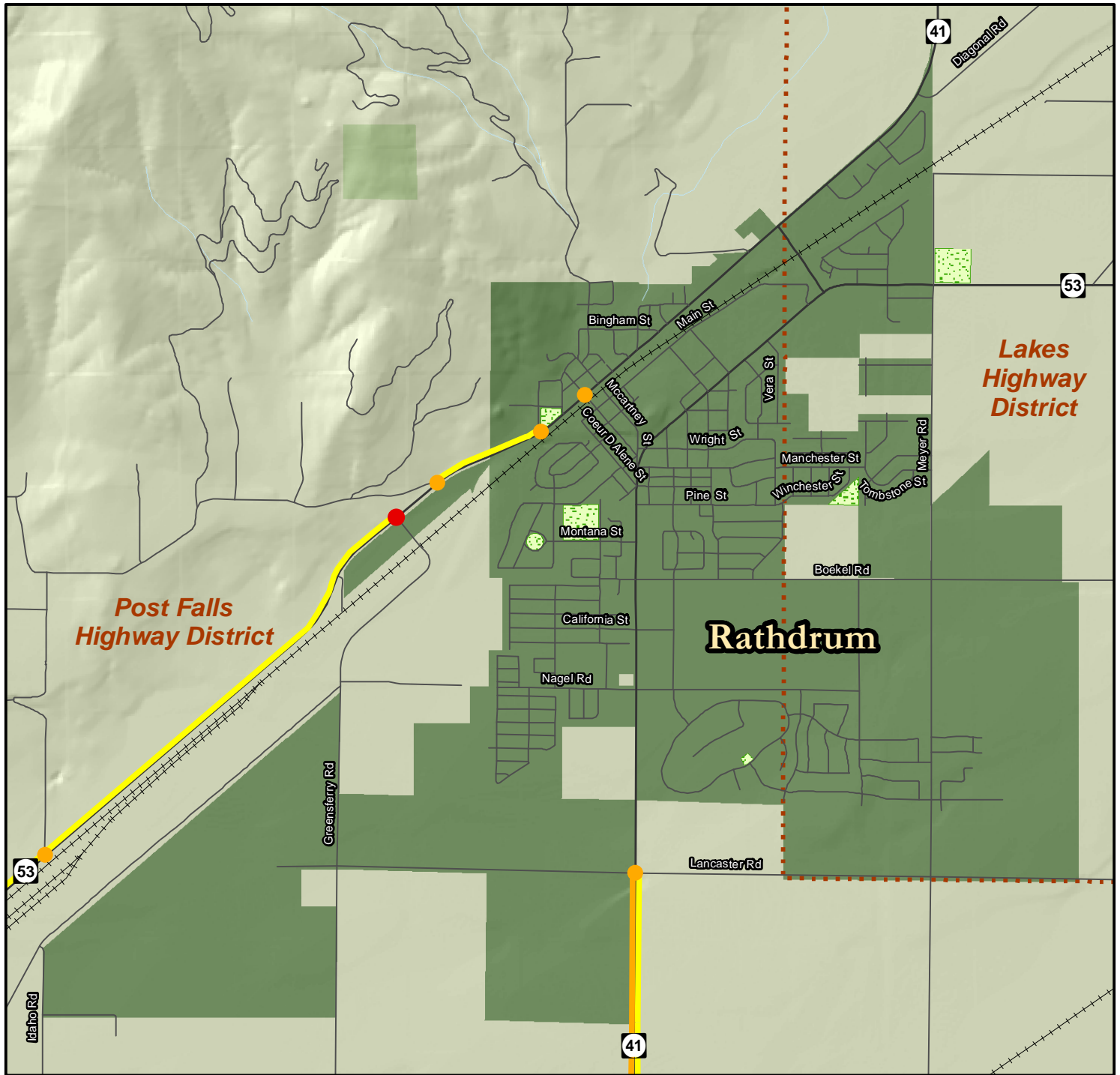
Physical Characteristics

- Red dashed line: Highway Districts
- Grey outline: County Boundary
- Blue dashed line: Urban Area Boundary
- Thick black line: Interstate
- Thin black line: US/State Highway
- Thin grey line: Local/Seasonal Road
- Green hatched area: National Forests
- Blue area: Water Features
- Green dotted area: Parks
- Black line with cross-ticks: Railroads

*Data based on best available information. *Data for illustrative purposes only.

Figure 4.5a

KOOTENAI METROPOLITAN TRANSPORTATION PLAN
2010-2035



KOOTENAI METROPOLITAN TRANSPORTATION PLAN
2010-2035

**FUTURE CONDITIONS 2030 NO BUILD
AM PEAK LEVEL OF SERVICE, RATHDRUM AREA**

Line & Node V/C Ratios

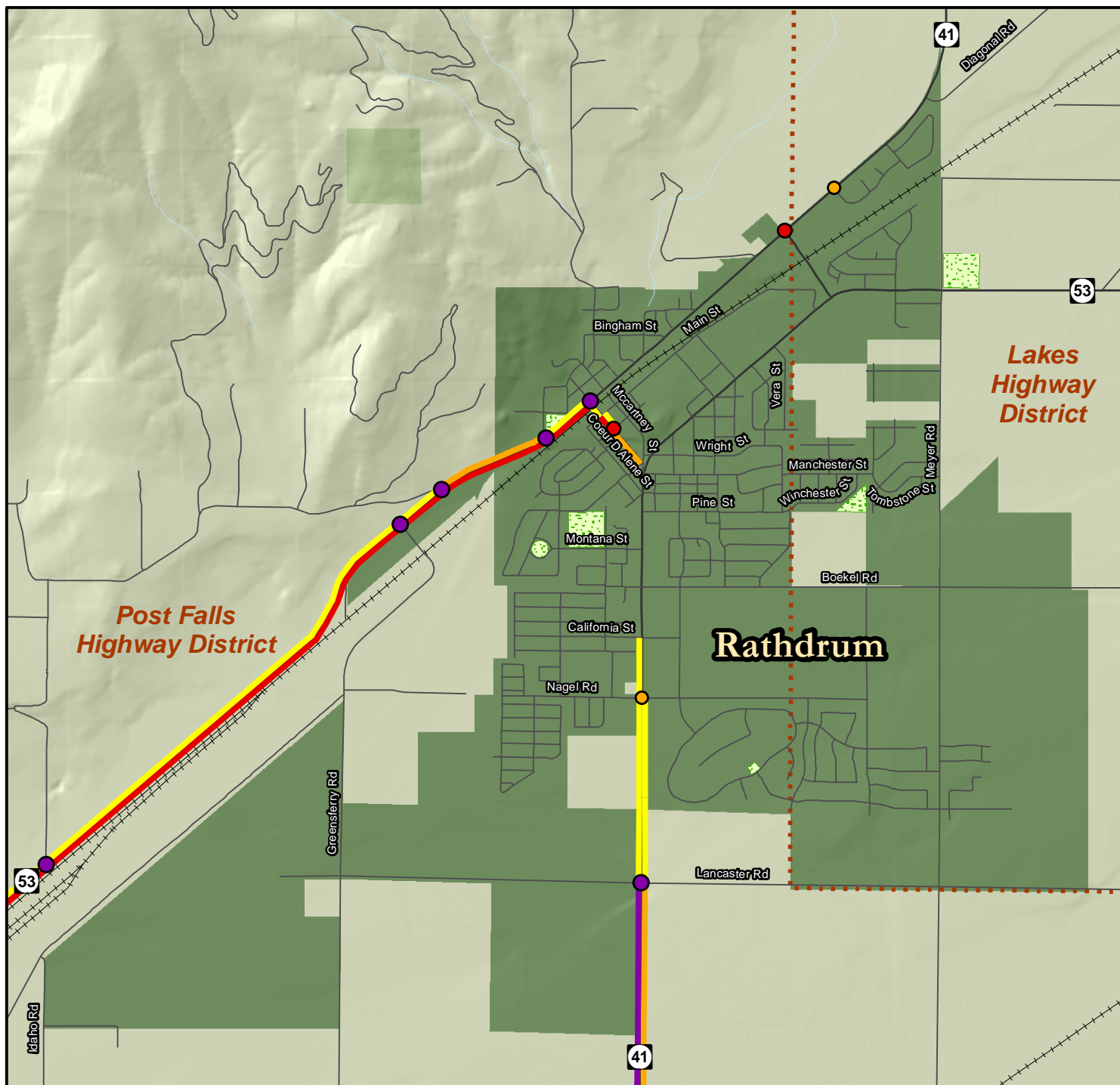
- Yellow line: Level C - > 70%
- Orange line: Level D - > 80%
- Red line: Level E - > 90%
- Purple line: Level F - > 100%
- Yellow circle: > 80%
- Red circle: > 90%
- Purple circle: > 100%

Physical Characteristics

- Red dashed line: Highway Districts
- Grey outline: County Boundary
- Black line: Interstate
- Blue dashed line: Urban Area Boundary
- Grey line: US/State Highway
- Light green area: National Forests
- Thin grey line: Local/Seasonal Road
- Blue area: Water Features
- Black line with cross-ticks: Railroads
- Green patterned area: Parks

*Data based on best available information. *Data for illustrative purposes only.

KOOTENAI METROPOLITAN TRANSPORTATION PLAN
2010-2035



KOOTENAI METROPOLITAN TRANSPORTATION PLAN
2010-2035

**FUTURE CONDITIONS 2030 NO BUILD
PM PEAK LEVEL OF SERVICE, RATHDRUM AREA**

Line & Node V/C Ratios

- Level C - > 70%
- Level D - > 80%
- Level E - > 90%
- Level F - > 100%
- > 80%
- > 90%
- > 100%

Physical Characteristics

- Highway Districts
- County Boundary
- Interstate
- Urban Area Boundary
- US/State Highway
- National Forests
- Local/Seasonal Road
- Water Features
- Railroads
- Parks

*Data based on best available information. *Data for illustrative purposes only.

Table 4.1 2030 No-Build Intersections > 80% Capacity, AM Pk hr

Location	Jurisdiction	% Capacity
SH 41 and Hayden Ave	ITD/Post Falls Highway District	150.5
Pleasant View Rd and Poleline Ave	Post Falls Highway District	135.7
Meyer Rd and Hayden Ave	Post Falls Highway District	134.8
SH 41 and Prairie Ave	ITD/Post Falls/ Post Falls Highway District	131.2
SH 53 and McGuire Rd	ITD/ Post Falls Highway District	122.6
Pleasant View Rd and Prairie Ave	Post Falls Highway District	121.4
Huetter Rd and Poleline Ave	Coeur d'Alene / Post Falls Highway District	121.2
Atlas Rd and Hanley Rd	Coeur d'Alene / Post Falls Highway District	118.8
US 95 and Chilco Rd	ITD/ Lakes Highway District	113.9
SH 53 and Pleasant View Rd	ITD/ Post Falls Highway District	110.8
US 95 and Garwood Rd	ITD/ Lakes Highway District	108.0
Northwest Blvd and Ironwood Dr	Coeur d'Alene / Post Falls Highway District	104.4
Northwest Blvd and I 90 EB on/off ramps	ITD/ Coeur d'Alene / Post Falls Highway District	102.9
Huetter Rd and Hayden Ave	Post Falls Highway District	102.4
Northwest Blvd and Lakewood Dr	Coeur d'Alene / Post Falls Highway District	102.3
US 95 and Ohio Match Rd	ITD/ Lakes Highway District	102.2
US 95 at SB off ramp	ITD/ Coeur d'Alene	102.2
US 95 and Boekel Rd	ITD/ Lakes Highway District	100.3
US 95 and Bunco Rd	ITD/ Lakes Highway District	100.2
McGuire Rd and Hayden Ave	Post Falls Highway District	97.6
SH 41 and I 90 WB on ramp	ITD/Post Falls	97.3
Seltice Way and Huetter Rd	Post Falls Highway District	94.4
SH 53 and Church Rd	ITD/ Post Falls Highway District	94.2
US 95 and Lancaster Ave	ITD/ Lakes Highway District	93.1
Seltice Way and Atlas Rd	Coeur d'Alene / Post Falls Highway District	92.3
Pleasant View Rd at I 90 WB on/off ramps	ITD/Post Falls	91.9
Atlas Rd and Greenwich Rd	Coeur d'Alene / Post Falls Highway District	91.3
SH 53 and Greensferry Rd	ITD/ Post Falls Highway District	91.3
Front Ave and 5th St	Coeur d'Alene	90.9
Huetter Rd and Prairie Ave	Coeur d'Alene / Post Falls Highway District	88.7
15th St and I 90 EB on ramp	ITD/ Coeur d'Alene /ESH D	88.2
Atlas Rd and Industrial	Coeur d'Alene / Post Falls Highway District	87.9
SH 53 and Mill	ITD/Rathdrum	87.4
US 95 and Dakota Ave	ITD/Hayden/ Lakes Highway District	87.3
Lincoln at I 90 EB on/off ramps	ITD/ Coeur d'Alene	86.5
SH 41 and Poleline Ave	ITD/Post Falls	85.0
SH 41 and Lancaster Ave	ITD/ Post Falls Highway District	84.6
US 95 at SB on/NB off ramps	ITD/ Coeur d'Alene	84.4
SH 53 and Latah	ITD/Rathdrum/ Post Falls Highway District	84.1
SH 53 and Hidden Valley Rd	ITD/Rathdrum/ Post Falls Highway District	84.0
Ramsey Rd and I 90 WB on/off ramps	ITD/ Coeur d'Alene	83.4
SH 41 and Seltice Way	ITD/Post Falls	83.3
Northwest Blvd and Emma St	Coeur d'Alene / Post Falls Highway District	82.6
US 53 and Ramsey Rd	ITD/ Lakes Highway District	82.2
US 95 and Honeysuckle Ave	ITD/Hayden/Lakes Highway District	81.3

Table 4.1 2030 No Build Intersections > 80% Capacity, AM Pk hr – CONTINUED

Location	Jurisdiction	% Capacity
12th Ave and Idaho St	Post Falls	80.8
Atlas Rd and Prairie Ave	Coeur d'Alene/Hayden/ Post Falls Highway District	80.7
SH 41 at I 90 WB on/off ramps	ITD	80.5
SH 53 and Idaho St	ITD/Post Falls Highway District	80.4

Table 4.2 2030 No-Build Intersections > 80% Capacity, PM Pk hr

Location	Jurisdiction	% Capacity
SH 41 and Hayden Ave	ITD/Post Falls Highway District	168.9
SH 53 and McGuire Rd	ITD/Post Falls Highway District	158.9
Pleasant View Rd and Poleline Ave	Post Falls Highway District	154.0
Meyer Rd and Hayden Ave	Post Falls Highway District	150.3
Huetter Rd and Poleline Ave	Post Falls Highway District	147.4
Atlas Rd and Hanley Ave	Coeur d'Alene/Post Falls Highway District	146.1
SH 41 and Prairie Ave	ITD/Post Falls Highway District	142.9
SH 53 and Pleasant View Rd	ITD/Post Falls Highway District	141.9
Huetter Rd and Hayden Ave	Post Falls Highway District	139.9
Pleasant View Rd and Prairie Ave	Post Falls Highway District	138.0
US 95 and Chilco Rd	ITD/Lakes Highway District	136.3
McGuire Rd and Hayden Ave	Post Falls Highway District	132.0
I 90 EB on/off ramps at Northwest Blvd	ITD/Coeur d'Alene/Post Falls Highway District	130.8
US 95 and Garwood Rd	ITD/Lakes Highway District	128.6
US 95 and Bunco Rd	ITD/Lakes Highway District	128.4
Northwest Blvd and Ironwood Dr	Coeur d'Alene/Post Falls Highway District	127.8
Ramsey Rd and Hanley Ave	Coeur d'Alene/Lakes Highway District	127.7
Northwest Blvd and Lakewood Dr	Coeur d'Alene/Post Falls Highway District	126.5
SH 53 and Church Rd	ITD/Post Falls Highway District	122.4
US 95 and Ohio Match Rd	ITD/Lakes Highway District	122.1
5th St and Front Ave	Coeur d'Alene	121.4
US 95 and Lancaster Ave	ITD/Lakes Highway District	121.4
I 90 WB on/off ramps at Pleasant View Rd	ITD	118.0
SH 53 and Greensferry Rd	ITD/Post Falls Highway District	116.4
US 95 at SB off ramp	ITD	115.9
Atlas Rd and Greenwich Ave	Post Falls Highway District	115.5
I 90 WB on/off ramps at Ramsey Rd	ITD/Coeur d'Alene	114.8
Ramsey Rd and Kathleen Ave	Coeur d'Alene/Lakes Highway District	113.9
Lincoln at I 90 EB on/off ramps	ITD/Coeur d'Alene	113.8
US 95 and Boekel Rd	ITD/Lakes Highway District	112.9
SH 41 at I 90 WB on ramp	ITD	112.6
SH 53 and Mill St	ITD/Rathdrum/Post Falls Highway District	111.4
Government Way and Dalton Ave	Coeur d'Alene/Lakes Highway District	111.3
Huetter Rd and Prairie Ave	Post Falls Highway District	111.3
15th St and I 90 EB on ramp	ITD/Coeur d'Alene	110.8
Government Way and Kathleen Ave	Coeur d'Alene	108.9
Government Way and Wilbur Ave	Coeur d'Alene	108.8
Ramsey Rd and Appleway Ave	Coeur d'Alene	108.3
SH 41 at I 90 WB on/off ramps	ITD	107.7
SH 53 and Hidden Valley	ITD/Post Falls Highway District	107.3
SH 53 and Latah St	ITD/Rathdrum	107.3
Ramsey Rd and Prairie Ave	Hayden	106.3
Northwest Blvd and Emma St	Coeur d'Alene	106.1
Seltice Way (EB) and Huetter Rd	Post Falls Highway District	105.6
SH 41 and Lancaster Ave	ITD/Post Falls Highway District	105.2

Table 4.2 2030 No-Build Intersections > 80% Capacity, PM Pk hr – CONTINUED

Location	Jurisdiction	% Capacity
SH 53 and Idaho	ITD/Post Falls Highway District	104.6
Idaho Rd and Hayden Ave	Post Falls Highway District	104.4
Idaho Rd and 12th Ave	Post Falls	104.1
Highland/Upriver and Riverview	Post Falls Highway District	104.0
Ramsey Rd and Golf Course Rd	Coeur d'Alene	104.0
Atlas Rd and Prairie Ave	Hayden	103.0
Northwest Blvd and Davidson	Coeur d'Alene	102.7
Northwest Blvd and Market Loop	Coeur d'Alene	102.0
Meyer Rd and Poleline Ave	Post Falls Highway District	102.0
SH 41 and 15th Ave	ITD/Post Falls	100.6
Ramsey Rd and SH 53	ITD/Lakes Highway District	100.6
Government Way and Prairie Ave	Hayden	100.4
US 95 at SB on/NB off ramp	ITD	99.6
Government Way and Haycraft	Coeur d'Alene	99.1
SH 41 and Seltice Way	ITD/Post Falls	99.1
SH 41 and Poleline Ave	ITD/Post Falls	98.7
US 95 and Dalton Ave	ITD/Coeur d'Alene	98.5
Ramsey Rd and Dalton Ave	Coeur d'Alene	98.4
SH 53 and Prairie Ave	ITD/Post Falls Highway District	98.3
Atlas Rd and Industrial	Coeur d'Alene	98.1
Government Way and Anton	Coeur d'Alene	98.0
US 95 and Honeysuckle Ave	ITD/Hayden	97.5
US 95 and Prairie Ave	ITD/Hayden	97.4
SH 53 and SH 53/SH 41	ITD/Rathdrum	97.2
Seltice Way (EB) and Atlas	Coeur d'Alene	96.5
Pleasant View Rd and 5th/Expo	Post Falls	96.4
US 95 and Dalton Ave	ITD/Coeur d'Alene	96.4
Mill St and 2nd St	Rathdrum	96.2
US 95 and Appleway Ave	ITD/Coeur d'Alene	96.1
Government Way and Appleway Ave	Coeur d'Alene	95.9
Chase Rd and Hayden Ave	Post Falls Highway District	95.0
Ramsey Rd and Wilbur Ave	Coeur d'Alene	93.9
US 95 and Dakota Ave	ITD/Hayden	93.5
SH 41 and Wyoming Ave	ITD/Post Falls Highway District	93.3
Northwest Blvd and Lacrosse	Coeur d'Alene	93.2
Government Way and Canfield	Coeur d'Alene	92.5
Government Way and Neider Ave	Coeur d'Alene	92.2
Government Way and Buckles	Hayden	92.2
US 95 and Wilbur	ITD/Coeur d'Alene	91.8
US 95 and Dakota	ITD/Hayden	91.7
US 95 and Canfield	ITD/Coeur d'Alene	91.5
Government Way and Honeysuckle Ave	Hayden	91.3
US 95 and Hanley Ave	ITD/Coeur d'Alene	91.1
Greensferry Rd and Prairie Ave	Post Falls Highway District	90.5
15th St and I 90 WB on ramp	ITD/Coeur d'Alene	90.4
US 95 and Kathleen Ave	ITD/Coeur d'Alene	90.0

Table 4.2 2030 No-Build Intersections > 80% Capacity, PM Pk hr – CONTINUED

Location	Jurisdiction	% Capacity
SH 41 and 12th Ave	ITD/Post Falls	90.0
US 95 and Prairie Ave	ITD/Hayden	89.8
I 90 EB on/off ramps at Pleasant View Rd	ITD/Post Falls	89.6
US 95 and Hayden Ave	ITD/Hayden	89.0
SH 41 and Nagel	ITD/Rathdrum	88.6
Government Way and Lancaster Ave	Hayden/ Coeur d'Alene	88.0
Seltice Way (WB) and Huetter Rd	Post Falls Highway District	87.8
US 95 and Bosanko	ITD/ Coeur d'Alene	87.1
Atlas Rd and Hayden Ave	Hayden	87.1
4th St and Harrison	Coeur d'Alene	86.1
Government Way and Boekel Rd	Lakes Highway District	85.5
Ramsey Rd and Hayden Ave	Hayden/ Lakes Highway District	85.4
Meyer Rd and Prairie Ave	Post Falls Highway District	85.1
Ramsey Rd and Columbus	Coeur d'Alene	84.5
SH 41 and Twin Lakes Rd	ITD/ Lakes Highway District	84.5
Ramsey Rd and Boekel Rd	Lakes Highway District	84.2
Pleasant View Rd and Seltice Way	Post Falls/ Post Falls Highway District	84.2
Government Way and Wyoming Ave	Hayden/ Coeur d'Alene	84.0
SH 41 and Scarcello Rd	ITD/Lakes Highway District	83.8
12th Ave and Cecil	Post Falls/Post Falls Highway District	83.6
Atlas Rd and Wilbur Ave	Coeur d'Alene	83.5
US 95 and Kathleen Ave	ITD/Coeur d'Alene	83.2
Greensferry Rd and Hayden Ave	Post Falls Highway District	83.2
US 95 and Honeysuckle Ave	ITD/Hayden	83.1
Seltice Way and McGuire Rd	Post Falls	83.1
US 95 and Orchard	ITD/Hayden	82.8
US 95/Government Way and SH 53	ITD/Lakes Highway District	82.2
Atlas and Newbrook	Coeur d'Alene	81.7
Kathleen Ave and Player	Coeur d'Alene	81.7
US 95 and Wilbur Ave	ITD/Coeur d'Alene	81.6
Government Way and Hanley Ave	Coeur d'Alene	81.1
SH 41 and Legacy	ITD/Rathdrum	80.9
Park and Garden	Coeur d'Alene	80.7
US 95 and Sun Up Bay	ITD/Worley Highway District	80.5
4th St and Foster	Coeur d'Alene	80.3
15th St and Nettleton	Coeur d'Alene	80.3

Table 4.3 2030 No-Build Roadway Segments > 70% Capacity, AM Pk Hr

Location	Jurisdiction	% Capacity
Hayden Ave from Happy Trl to Huetter Rd	Post Falls Highway District	120
Hayden Ave from Meyer Rd to Happy Trl	Post Falls Highway District	119
Hayden Ave from Huetter Rd to Happy Trl	Post Falls Highway District	116
Park Rd from Northwest Blvd to Park/Northwest Alley	Coeur d'Alene	115
Hayden Ave from Happy Trl to Meyer Rd	Post Falls Highway District	115
Pleasant View Rd from Poleline Ave to halfway between Poleline Ave and Seltice Way	Post Falls Highway District	114
US 95 from Garwood Rd to Ohio Match Rd	ITD/Lakes Highway District	112
US 95 from Chilco Rd to Wishful Rd	ITD/Lakes Highway District	112
US 95 from Wishful Rd to Corbin Hill Rd	ITD/Lakes Highway District	111
US 95 from Ohio Match Rd to Chilco Rd	ITD/Lakes Highway District	111
Pleasant View Rd from Prairie Ave to Poleline Ave	Post Falls Highway District	109
US 95 from Corbin Hill Rd to Bunco Rd	ITD/Lakes Highway District	104
SH 53 from McGuire Rd to Pleasant View Rd	ITD/Post Falls Highway District	101
Hayden Ave from SH 41 to Meyer Rd	Post Falls Highway District	98
Hayden Ave from Meyer Rd to SH 41	Post Falls Highway District	97
Bunco Rd from US 95 to Hatch Rd	Lakes Highway District	96
Northwest Blvd from Ironwood Dr to Lakewood Dr	Coeur d'Alene	96
Huetter Rd from halfway between Poleline Ave and Prairie Ave to Poleline Ave	Coeur d'Alene	95
SH 41 from Prairie Ave to Hayden Ave	ITD/Post Falls Highway District	93
Garden Ave from Park Dr to just West of Hubbard Ave	Coeur d'Alene	92
Pleasant View Rd from SH 53 to Prarie Ave	Post Falls Highway District	92
Pleasant View Rd from Poleline Ave to Prairie Ave	Post Falls Highway District	91
SH 41 from Hayden Ave to Prairie Ave	ITD/Post Falls Highway District	90
Pleasant View Rd from mid-block between Poleline Ave and Seltice Way to Poleline Ave	Post Falls Highway District	90
Huetter Rd from South of Big Sky Dr to North of Prairie Trail	Post Falls Highway District	89
Atlas Rd from Jonshawk to Hanley	Coeur d'Alene	89
Atlas Rd from Hanley to Jonshawk	Coeur d'Alene	89
SH 53 from Church Rd to McGuire Rd	ITD/Post Falls Highway District	88
SH 41 from I-90 overpass to I-90 EB on ramp	ITD/Post Falls	85
Garwood Rd from Old US 95 to US 95	Lakes Highway District	84
US 95 from Lancaster Ave to Boekel Rd	ITD/Lakes Highway District	84
Idaho St from 12th Ave to 10th Ave	Post Falls	84
Northwest Blvd from Lakewood Dr halfway between Lakewood Dr and Emma Ave	Coeur d'Alene	83
SH 41 from Wyoming Ave to Hayden Ave	ITD/Post Falls Highway District	83
US 95 from Boekel Rd to Lancaster Ave	ITD/Lakes Highway District	82
McGuire Rd from Hayden Ave to SH 53	Post Falls Highway District	82
Garwood Rd from US 95 to Old US 95	Lakes Highway District	81
US 95 from Government Way to Garwood Rd	ITD/Lakes Highway District	81

Table 4.3 2030 No-Build Roadway Segments > 70% Capacity, AM Pk Hr – CONTINUED

Location	Jurisdiction	% Capacity
SH 41 from Lancaster Ave to Wyoming Ave	ITD/Post Falls Highway District	81
Prairie Ave from Beck Rd to SH 53	Post Falls Highway District	81
Park Dr from River Ave to Northwest Blvd/Park Dr Alley	Coeur d'Alene	78
Atlas Rd from Dalton Ave to Jonshawk	Coeur d'Alene	78
Ironwood Dr from Northwest Blvd to Access	Coeur d'Alene	78
Boekel Rd from halfway between Ramsey Rd and US 95 to US 95	Lakes Highway District	77
Atlas Rd from Jonshawk to Dalton Ave	Coeur d'Alene	77
US 95 from Prairie Ave to Centa	Hayden	76
I 90 WB from Pleasant View Rd I/C to Washington state line	ITD/Post Falls	76
Huetter Rd from North of Prairie Trail to halfway between Poleline Ave and Prairie Ave	Post Falls Highway District	75
US 95 from Ohio Match Rd to Garwood Rd	ITD/Lakes Highway District	75
Atlas Rd from Industrial to Hanley Ave	Coeur d'Alene	75
SH 41 (SB) just north of Seltice Way	ITD/Post Falls	75
SH 53 from Greensferry Rd to Church Rd	ITD/Post Falls Highway District	75
US 95 from Corbin Hill Rd to approximately Ponderosa Rd	ITD/Lakes Highway District	74
US 95 from Wishful Trl to Chilco Rd	ITD/Lakes Highway District	74
US 95 from Lancaster Ave to separation pt	ITD/Hayden	74
Kathleen Ave from St Michele Dr to Player Dr	Coeur d'Alene/Lakes Highway District	74
Huetter Rd from North of Prairie Trail to South of Big Sky Dr	Coeur d'Alene	74
Huetter Rd from Poleline Ave to South of Big Sky Dr	Coeur d'Alene	74
Northwest Blvd from mid-block between Emma and Lakewood Dr to Emma	Coeur d'Alene	74
Northwest Blvd from I 90 EB on/off ramps to SB Northwest Blvd/WB Seltice Way	Coeur d'Alene	74
SH 41 from North of BNSF Northeasterly line to Wyoming Ave	ITD/Post Falls Highway District	74
SH 41 from Hayden Ave to North of BNSF line	ITD/Post Falls Highway District	74
Northwest Blvd from Emma Ave to Mill Ave	Coeur d'Alene	73
Ramsey Rd from Appleway to I 90 WB on/off ramps	Coeur d'Alene/Lakes Highway District	73
SH 41 (SB) just north of 12th Ave	ITD/Post Falls	72
I 90 WB on ramp from Pleasant View Rd	ITD/Post Falls	72
Boekel Rd from Ramsey Rd to mid-block between Ramsey Rd and US 95	Lakes Highway District	71
Front Ave from 5th to 6th	Coeur d'Alene	71
SH 41 from Wyoming Ave to Lancaster Ave	ITD/Post Falls Highway District	71
Hayden Ave from Greensferry Rd to Idaho Rd	Post Falls Highway District	71
Pleasant View Rd from 5th Ave/Expo to I 90 WB on/off ramps	Post Falls	71
SH 53 from Latah to Hidden Valley	ITD/Rathdrum	71

Table 4.4 2030 No-Build Roadway Segments > 70% Capacity, PM Pk Hr

Location	Jurisdiction	% Capacity
Hayden Ave from Huetter Rd to Happy Trl	Post Falls Highway District	135
Hayden Ave from Happy Trl to Meyer Rd	Post Falls Highway District	134
Hayden Ave from Meyer Rd to SH 41	Post Falls Highway District	128
Hayden Ave from Happy Trl to Huetter Rd	Post Falls Highway District	126
Hayden Ave from Meyer Rd to Happy Trl	Post Falls Highway District	124
Huetter Rd from mid-block between Poleline Ave and Big Sky to Poleline Ave	Post Falls Highway District	121
Pleasant View Rd from Lark to Poleline Ave	Post Falls Highway District	121
Huetter Rd from just north of Big Sky to mid-block between Poleline Ave and Big Sky	Post Falls Highway District	119
Atlas Rd from Hanley to Jonshawk	Coeur d'Alene	114
Pleasant View Rd from Poleline Ave to Prairie Ave	Post Falls Highway District	113
Pleasant View Rd from Poleline Ave to Lark	Post Falls Highway District	113
Government Way from Dalton Ave to Park	Coeur d'Alene	112
SH 53 from Praire Ave to Hayden Ave	ITD/ Post Falls Highway District	112
US 95 from Ohio Match Rd to Garwood Rd	ITD/Lakes Highway District	112
US 95 Wishful Rd to Chilco Rd	ITD/Lakes Highway District	112
US 95 from Corbin Hill Rd to Wishful Rd	ITD/Lakes Highway District	111
US 95 from Chilco Rd to Ohio Match Rd	ITD/Lakes Highway District	111
US 95 from Garwood Rd to Ohio Match Rd	ITD/Lakes Highway District	111
US 95 Chilco Rd to Wishful Rd	ITD/Lakes Highway District	111
US 95 from Wishful Rd to Corbin Hill Rd	ITD/Lakes Highway District	110
US 95 from Ohio Match Rd to Chilco Rd	ITD/Lakes Highway District	110
Pleasant View Rd from Prairie Ave to Poleline Ave	Post Falls Highway District	109
Prairie Ave from SH 53 to Beck Rd	Post Falls Highway District	108
Hayden Ave from SH 41 to Meyer Rd	Post Falls Highway District	106
SH 41 from Hayden Ave to Prairie Ave	ITD/ Post Falls Highway District	106
US 95 from Corbin Hill Rd to Bunco Rd	ITD/Lakes Highway District	105
SH 53 from Hayden Ave to Church	ITD/ Post Falls Highway District	105
US 95 from Bunco Rd to Corbin Hill Rd	ITD/Lakes Highway District	104
Prairie Ave from Beck Rd to SH 53	Post Falls Highway District	103
Northwest Blvd from Ironwood to I 90 EB on/off ramps	Coeur d'Alene	103
Atlas Rd from Jonshawk to Accipter	Coeur d'Alene	103
Hayden Ave from SH 41 to East of BNSF line	Post Falls Highway District	102
Garwood Rd from SH 53 to US 95	Lakes Highway District	101
Ironwood from Access to Northwest Blvd	Coeur d'Alene	101
Front from 6th to 5th	Coeur d'Alene	101
SH 41 from Lancaster to Wyoming Ave	ITD/Rathdrum	101
Hayden Ave from Atlas to Huetter Rd	Hayden	100
SH 41 from Wyoming Ave to Hayden Ave	ITD/ Post Falls Highway District	99
Foster from 3rd to 4th	Coeur d'Alene	99
Ramsey Rd from Prairie Ave to Cardinal	Hayden	99

Table 4.4 2030 No-Build Roadway Segments > 70% Capacity, PM Pk Hr – CONTINUED

Location	Jurisdiction	% Capacity
Government Way from Wyoming Ave to Buckle	Hayden/Lakes Highway District	99
Hayden Ave from East of BNSF line to Greensferry Rd	Post Falls Highway District	98
Northwest Blvd from Lakewood to Ironwood	Coeur d'Alene	98
Mill St from Man to 2nd	Rathdrum	98
Government Way from Wilbur to Aqua	Hayden	98
Boekel Ave from US 95 to West of US 95	Lakes Highway District	97
Ramsey Rd from I 90 EB on/off ramps to Appleway Ave	Coeur d'Alene	97
Government Way from Park to Dalton Ave	Coeur d'Alene	96
Government Way from Aqua to Prairie Ave	Hayden	96
Upriver Dr from Riverview Dr to halfway between Jarsper Rd and Zircon Ln	Post Falls Highway District	95
Government Way from Hanley Ave to halfway between Hanley Ave and Canfield Ave	Coeur d'Alene	95
Atlas Rd from Industrial to Hanley	Coeur d'Alene	94
SH 53 from Greensferry Rd to Latah Rd	ITD/Rathdrum	94
Upriver Dr from US 95 to Riverview	Post Falls Highway District	94
Hayden Ave from Greensferry Rd to Idaho Rd	Post Falls Highway District	94
Bunco Rd from Hatch to US 95	LHD	94
US 95 from Coeur d'Alene city limits to Fairmont	ITD/Coeur d'Alene	93
Upriver Dr from west of Starlight to Riverview	Post Falls Highway District	93
US 95 from Boekel Ave to Lancaster Ave	Lakes Highway District	93
Ramsey Rd from Appleway Ave to Golf Course Rd	Coeur d'Alene	92
Atlas Rd from Greenwich to Bristol	Coeur d'Alene	92
Garwood Rd from US 95 to SH 53	Lakes Highway District	92
SH 41 from I-90 to Seltice Way	ITD/Post Falls	92
SH 53 from Latah St to Mill St	ITD/Rathdrum	92
Upriver Dr from halfway between Zircon Ln and Agate Rd to West of Starlight Rd	Post Falls Highway District	91
SH 53 from Church Rd to Greensferry Rd	ITD/ Post Falls Highway District	91
Pleasant View Rd from Prairie Ave to SH 53	Post Falls Highway District	91
Boekel Ave from mid-block from US 95 to Ramsey Rd	Lakes Highway District	90
SH 53 from Hayden Ave to Prairie Ave	ITD/Post Falls Highway District	90
US 95 from Prairie Ave to Centa	ITD/Hayden	89
Ramsey Rd from Golf Course Rd to halfway between Golf Course Rd and Kathleen Ave	Coeur d'Alene	89
Ramsey Rd from Ramsey Park to Kathleen Ave	Coeur d'Alene	89
Poleline Ave from Huetter Rd to Meyer Rd	Post Falls Highway District	89
Huetter Rd from Poleline Ave to mid-block between Poleline Ave and Big Sky	Post Falls Highway District	89
Mill Rd from 2nd to 4th	Rathdrum	89
Government Way from Alvis to Lancaster Ave	Hayden	89
US 95 from Lancaster Ave to Boekel Ave	Lakes Highway District	89
I 90 EB off ramp at Pleasant View Rd	ITD/Post Falls	89
Government Way from just north of Dalton Ave to Hanley Ave	Coeur d'Alene	88

Table 4.4 2030 No-Build Roadway Segments > 70% Capacity, PM Pk Hr – CONTINUED

Location	Jurisdiction	% Capacity
I 90 EB off ramp at Pleasant View Rd	ITD/Post Falls Highway District	89
Government Way from just north of Dalton Ave to Hanley Ave	Coeur d'Alene	88
McGuire Rd from SH 53 to Hayden Ave	Post Falls Highway District	88
Government Way from Canfield Ave to Wilbur Ave	Coeur d'Alene	88
Government Way from Buckles Rd to Alvis Rd	Hayden	87
Northwest Blvd from Ironwood to Lakewood	Coeur d'Alene	87
SH 53 from Church to Hayden Ave	ITD/Post Falls Highway District	87
I 90 EB from Idaho state line to Pleasant View IC	ITD/Post Falls Highway District	87
Atlas from Dakota to Hayden Ave	Hayden	86
Seltice Way from west of Riverstone to Atlas	Coeur d'Alene	85
Atlas Rd from Jonshawk to Hanley	Coeur d'Alene	85
Ramsey Rd from Dalton Ave to Hanley Ave	Coeur d'Alene	85
Idaho St from 10th to 12th	Post Falls	85
Atlas Rd from Bristol to Kathy	Coeur d'Alene	84
Prairie Ave from SH 41 to Post Falls city limits	Post Falls/Post Falls Highway District	84
McGuire Rd from Hayden Ave to SH 53	Post Falls Highway District	84
Idaho St from 12th to 10th	Post Falls	84
Huetter Rd from mid-block between Poleline Ave and Big Sky to just north of Big Sky	Post Falls Highway District	83
I 90 from Ramsey Rd/Northwest Blvd IC to SH 41 IC	ITD/Coeur d'Alene	83
Seltice Way from Atlas to Huetter Rd	Coeur d'Alene	83
Ramsey Rd from north of Wilbur to Prairie Ave	Hayden	83
Atlas Rd from Accipter to Jonshawk	Coeur d'Alene	82
Mullan from Henry to Idaho St	Post Falls	82
Government Way from Centa to Honeysuckle Ave	Hayden	82
Hayden Ave from Idaho Rd to Chase St	Post Falls Highway District	82
Northwest Blvd from mid block from Emma to Lakewood	Coeur d'Alene/Post Falls Highway District	81
Park from Lincoln to Northwest	Coeur d'Alene	81
15th St from I 90 EB off ramp to I 90 EB on ramp	Coeur d'Alene /East Side Highway District	81
Poleline Ave from Meyer Rd to Huetter Rd	Post Falls Highway District	81
Front from 5th to 6th	Coeur d'Alene	81
SH 53 from Latah to Hidden Valley	ITD/Rathdrum	81
SH 41 from Wyoming Ave to Lancaster Ave	ITD/Post Falls Highway District	81
US 95 from Lancaster Ave to mid-block to Wyoming Ave	Hayden	80
Sunshine from Sunburst to Hanley Ave	Coeur d'Alene	80
Foster from 2nd to 3rd	Coeur d'Alene	80
Pleasant View Rd from I 90 WB on/off ramps to Expo/5th	Post Falls	80
Government Way from Prairie Ave to Centa	Hayden	80
SH 53 from Hidden Valley Rd to Church Rd	ITD/Post Falls Highway District	79

Table 4.4 2030 No-Build Roadway Segments > 70% Capacity, PM Pk Hr – CONTINUED

Location	Jurisdiction	% Capacity
US 95 from Garwood Rd to Government Way	ITD/Lakes Highway District	79
Atlas Rd from Kathy to Industrial	Coeur d'Alene	79
Hayden Ave from Chase Rd to McGuire Rd	Post Falls Highway District	79
Hayden Ave from West of SH 41 to SH 41	Post Falls Highway District	78
Upriver Dr from Riverview to west of Starlight	Post Falls Highway District	78
Government Way from Appleway Ave to E Anton Rd	Coeur d'Alene	78
SH 41 from California St to Lancaster Ave	ITD/Rathdrum	78
SH 53 from Mill St to Latah St	ITD/Rathdrum	78
Ramsey Rd from Hanley Ave to Canfield	Coeur d'Alene	77
Front Ave from 5th St to Sherman Ave	Coeur d'Alene	77
US 95 from Wyoming Ave to Lancaster Ave	Hayden	77
Government Way from E Anton Rd to Neider Ave	Coeur d'Alene	77
Wyoming Ave from mid-block from Meyer to SH 41	Post Falls Highway District	77
Best from 4th St to 6th St	Coeur d'Alene	77
Prairie Ave from Huetter Rd to Daisy Rd	Post Falls Highway District	77
Prarie Ave from Post Falls city limits to Greensferry Rd	Post Falls Highway District	76
Northwest Blvd from between Emma & Davidson to Mill Rd	Coeur d'Alene	76
Northwest Blvd from Lakewood Dr to Emma Ave	Coeur d'Alene	76
I 90 from SH 41 on ramp to Ramsey Rd/Northwest Blvd IC	ITD/ Post Falls Highway District	76
Ramsey Rd from Cardinal to Leisure	Hayden	76
Kathleen Ave from Player Dr to St Michelle Dr	Coeur d'Alene	76
Upriver Dr from between Zircon and Agate to Riverview Dr	Post Falls Highway District	76
Mullan from Chase Rd to Seltice Way	Post Falls	76
Praire Ave from Daisy to Meyer Rd	Post Falls Highway District	76
US 95 from Government Way to Garwood	ITD/Lakes Highway District	76
Government Way from halfway between Canfield Ave & Hanley Ave to Canfield Ave	Coeur d'Alene	76
Hayden Ave from East of BNSF line to Greensferry Rd	Post Falls Highway District	76
Hayden Ave from McGuire Rd to Chase Rd	Post Falls Highway District	76
Government Way from Lancaster Ave to Boekel Ave	Lakes Highway District	76
Northwest Blvd from Emma to mid block to Lakewood	Coeur d'Alene	75
Boekel Ave from between US 95 and Ramsey Rd to US 95	Lakes Highway District	75
US 95 from I 90 EB on/off ramps to WB on/off ramps	ITD/ Coeur d'Alene	75
I 90 from Spokane St IC to Pleasant View Rd IC	ITD/Post Falls	75
Ramsey from I 90 EB on/off ramps to WB on/off ramps	Coeur d'Alene	75
I 90 from EB on ramp from Seltice Way to SH 41 IC	ITD/Post Falls	75
Bunco Rd from US 95 to Hatch Rd	Lakes Highway District	75
16 th from Spice to Meyer Rd	Post Falls Highway District	74
Ramsey Rd from just south of Wilbur Ave to Wilber Ave	Coeur d'Alene	74
Northwest Blvd from Emma Ave to mid block to Davidson Ave	Coeur d'Alene	74
Northwest Blvd from Davidson Ave to mid block to Emma Ave	Coeur d'Alene	74

Table 4.4 2030 No-Build Roadway Segments > 70% Capacity, PM Pk Hr – CONTINUED

Location	Jurisdiction	% Capacity
Lincoln Way from Virginia Ave to Harrison Ave	Coeur d'Alene	74
SH 41 from mid-block between 15 th and 12 th to 12 th	ITD/Post Falls	74
US 95 from Northwest Blvd to Coeur d'Alene city limits	ITD/Coeur d'Alene	74
Upriver Dr from west of Starlight Dr to between Zircon and Agate	Post Falls Highway District	74
Ramsey Rd from Boekel Ave to SH 53	Lakes Highway District	74
Meyer Rd from Poleline Ave to 16 th	Post Falls Highway District	74
I 90 WB on ramp from Ramsey Rd	ITD/Coeur d'Alene	74
I 90 from SH 41 IC to WB off ramp to Seltice Way	ITD/Post Falls	74
Ramsey Rd from Kathleen Ave to Dalton Ave	Coeur d'Alene	74
Northwest Blvd from mid block from Davidson Ave to Emma Ave	Coeur d'Alene	73
Ramsey Rd from Canfield Ave to just south of Wilbur Ave	Coeur d'Alene	73
SH 41 (SB) just north of Seltice Way	ITD/Post Falls	73
Mill from 2 nd to Man	Rathdrum	73
Northwest Blvd from Mill Ave to Davidson Ave	Coeur d'Alene	73
SH 41 from Prairie Ave to Hayden Ave	ITD/Post Falls Highway District	73
Government Way from between Canfield Ave and Hanley Ave to Hanley Ave	Coeur d'Alene	73
US 95 from Canfield Ave to Wilbur Ave	ITD/Coeur d'Alene	72
Expo from just east of Pleasant View Rd to Pleasant View Rd	Post Falls	72
SH 41 from Praire Ave to mid-block to Hope	ITD/Post Falls	72
Seltice Way from Huetter Rd to Old Atlas	Post Falls Highway District	72
SH 41 from 12 th to mid-block between 12 th and Mullan	ITD/Post Falls	72
Government Way from Hanley Ave to Park Ave	Coeur d'Alene	72
Hayden Ave from Chase Rd to Idaho Rd	Post Falls Highway District	72
SH 41 from Lancaster Ave to Hagel Ave	ITD/Rathdrum	72
US 95 from Centa to Honeysuckle Ave	ITD/Hayden	71
Hayden Ave from Ramsey Rd to just east of Chateaux	Hayden	71
Boekel Ave from Ramsey Rd to mid block to US 95	Lakes Highway District	71
Prairie Ave from Huetter Rd to just east of Huetter Rd	Post Falls Highway District	71
Seltice Way from Old Atlas to Atlas	Coeur d'Alene	71
Beck Rd from halfway between Prairie Ave and Seltice Way to Prairie Ave	Post Falls Highway District	71
Foster Ave from Government Way to 2nd	Coeur d'Alene	71
15th St from I 90 EB on ramp (from SB 15th) to I 90 EB on ramp (from NB 15th)	Coeur d'Alene	71
Front from Sherman Ave to 5th St	Coeur d'Alene	71
Mill St from SH 53 to Main St	Rathdrum	71
Pleasant View Rd from Expo/5th to I 90 WB on/off ramps	Post Falls	71

2030 Build Model

The 2030 Build scenario incorporates planned transportation improvement projects to the 2007 base roadway network. This scenario is compared directly against the 2030 No-Build scenario in order to evaluate the composite regional impact of planned projects. Roadways and intersections projected to be congested in 2030 are presented in Figures 4.6-4.10 and Tables 4.5-4.8

The 2030 Build model VISUM version file used for this MTP update is 2030 KMPO Build Full Run10J 11-19-09.ver.