

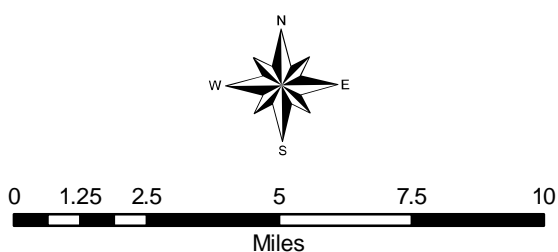
**FUTURE CONDITIONS 2030 BUILD
AM PEAK LEVEL OF SERVICE, KOOTENAI COUNTY**

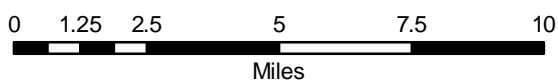
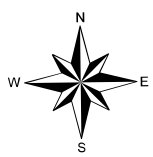
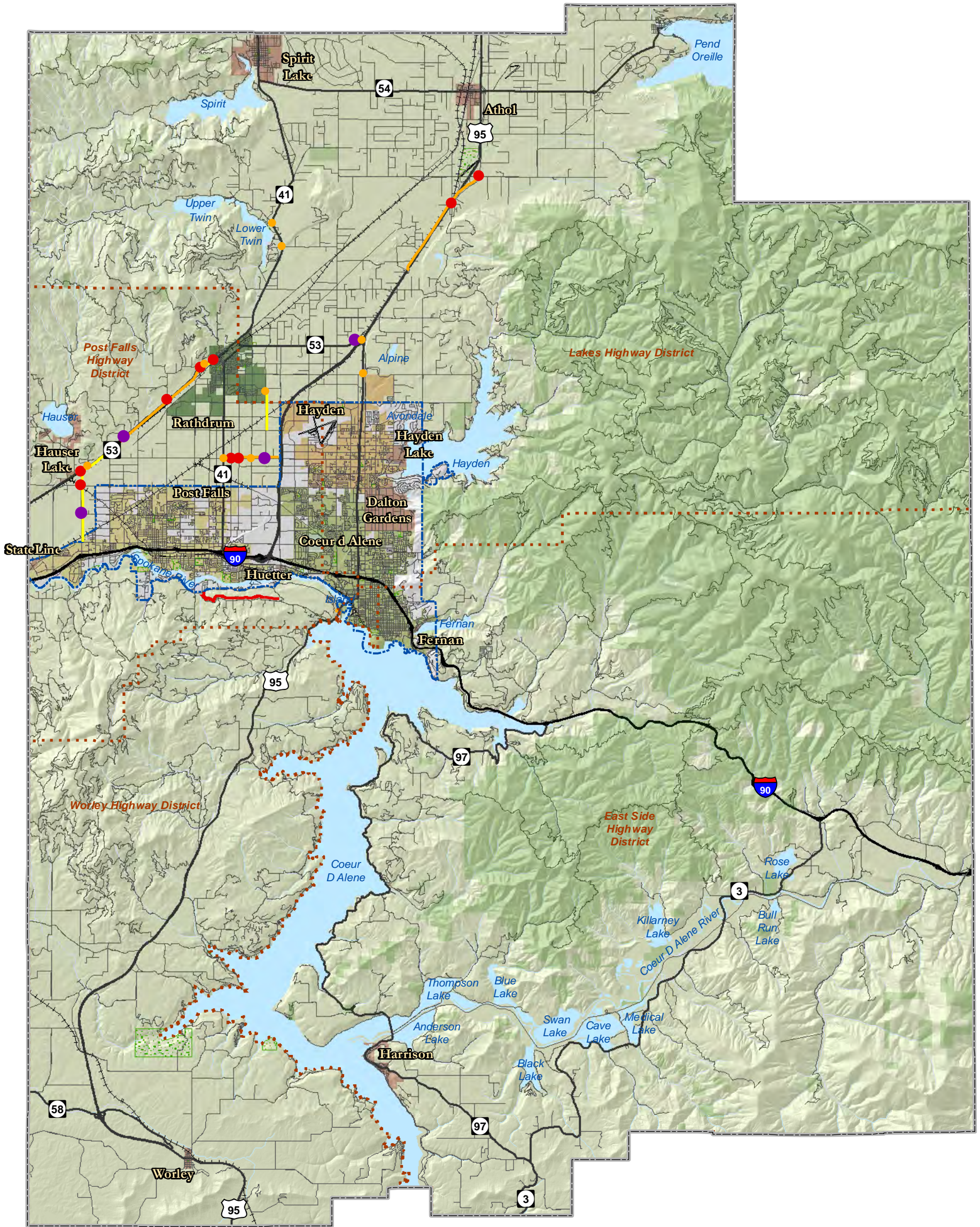
Link & Node V/C Ratios

- Level C - > 70%
- Level D - > 80%
- Level E - > 90%
- Level F - > 100%
- > 80%
- > 90%
- > 100%

Physical Characteristics

- Highway Districts
- County Boundary
- Interstate
- Urban Area Boundary
- US/State Highway
- National Forests
- Local/Seasonal Road
- Water Features
- Railroad
- Parks





FUTURE CONDITIONS 2030 BUILD PM PEAK LEVEL OF SERVICE, KOOTENAI COUNTY

Link & Node V/C Ratios

- Level C - > 70%
- Level D - > 80%
- Level E - > 90%
- Level F - > 100%
- > 80%
- > 90%
- > 100%

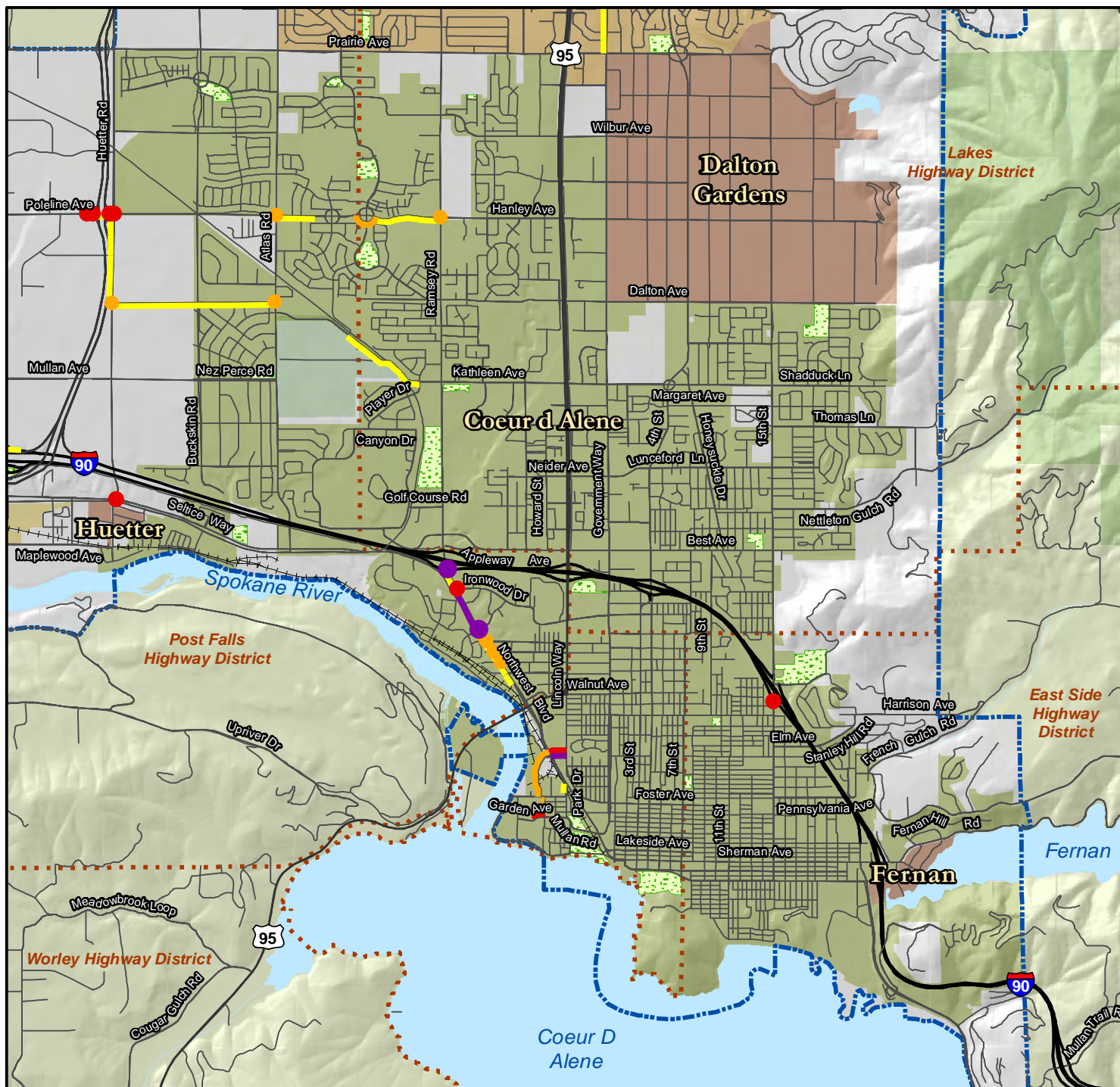
Physical Characteristics

- Highway Districts
- County Boundary
- Interstate
- Urban Area Boundary
- US/State Highway
- National Forests
- Local/Seasonal Road
- Water Features
- Railroad
- Parks

*Data based on best available information. *Data for illustrative purposes only.

Figure 4.7a

KOOTENAI METROPOLITAN TRANSPORTATION PLAN
2010-2035



**FUTURE CONDITIONS 2030 BUILD
AM PEAK LEVEL OF SERVICE, COEUR D'ALENE AREA**

Link & Node V/C Ratios

- Yellow line: Level C -> 70%
- Orange line: Level D -> 80%
- Red line: Level E -> 90%
- Purple line: Level F -> 100%
- Yellow circle: > 80%
- Red circle: > 90%
- Purple circle: > 100%

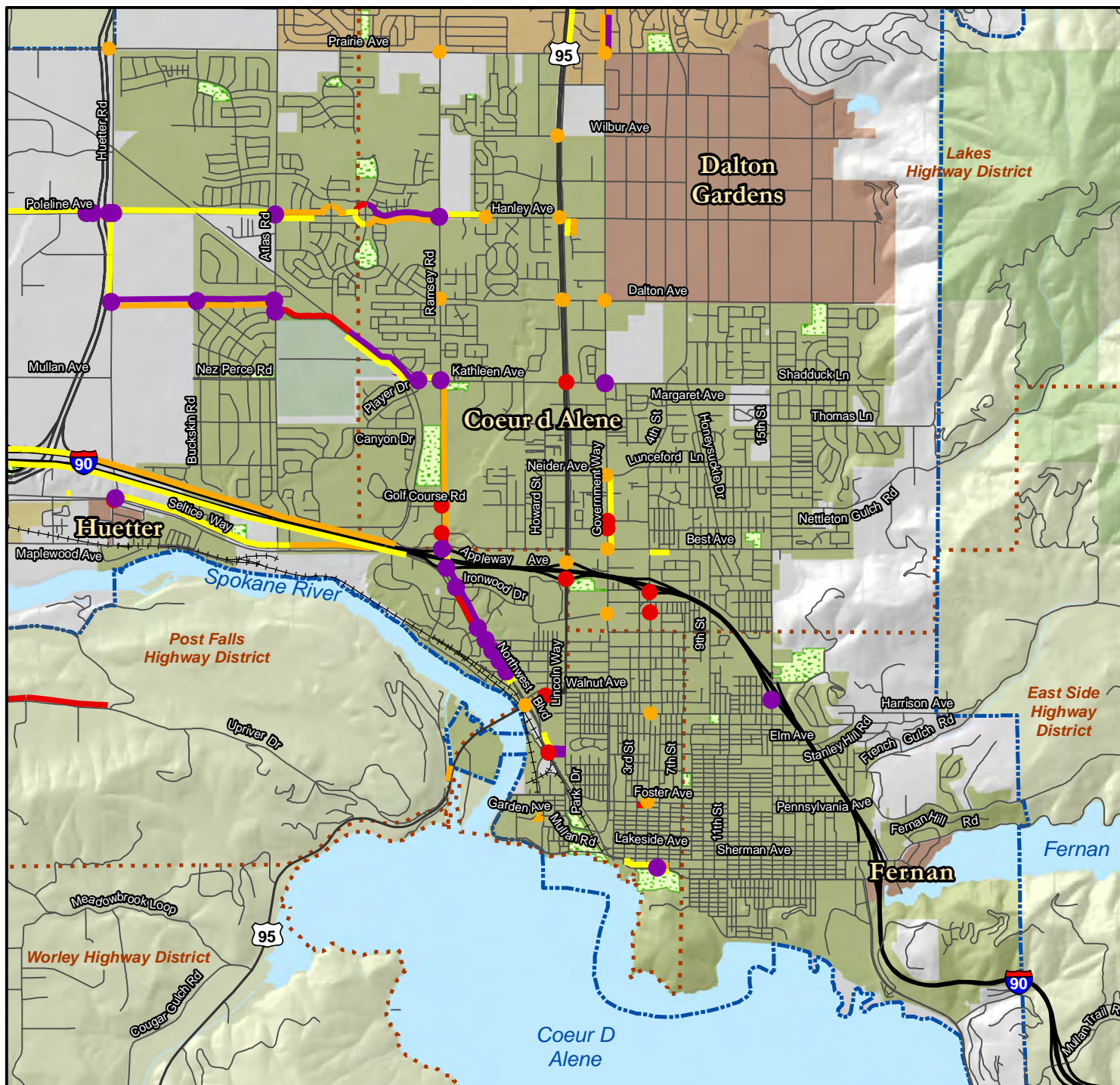
Physical Characteristics

- Red dashed line: Highway Districts
- Black line: Interstate
- Grey line: US/State Highway
- Thin grey line: Local/Seasonal Road
- Black line with cross-ticks: Railroads
- Grey outline: County Boundary
- Blue dashed line: Urban Area Boundary
- Green shaded area: National Forests
- Blue shaded area: Water Features
- Green dotted area: Parks

*Data based on best available information. *Data for illustrative purposes only.

Figure 4.7b

KOOTENAI METROPOLITAN TRANSPORTATION PLAN
2010-2035



KOOTENAI METROPOLITAN TRANSPORTATION PLAN
2010-2035

**FUTURE CONDITIONS 2030 BUILD
PM PEAK LEVEL OF SERVICE, COEUR D'ALENE AREA**

Link & Node V/C Ratios

- Level C -> 70%
- Level D -> 80%
- Level E -> 90%
- Level F -> 100%
- > 80%
- > 90%
- > 100%

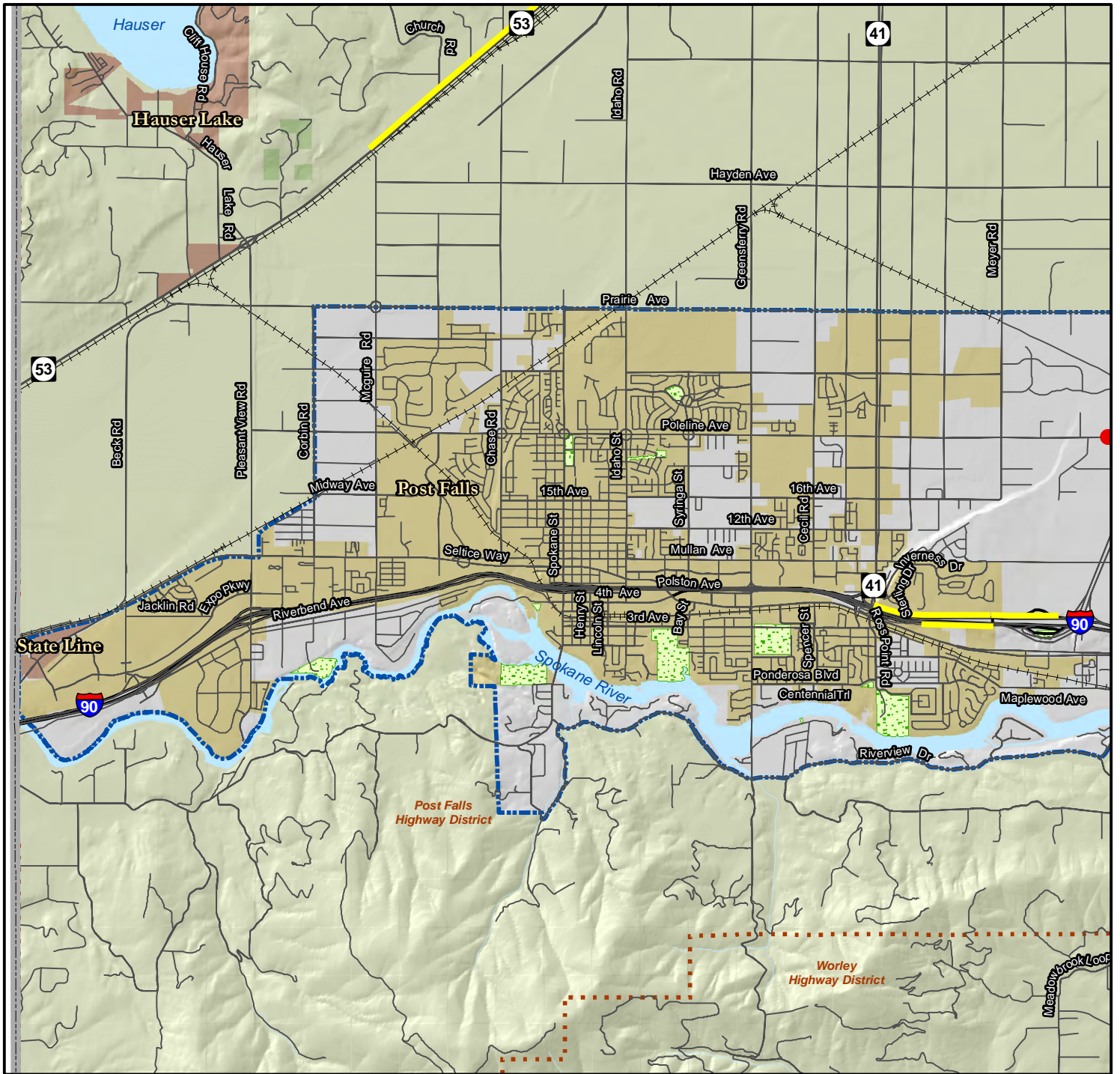
Physical Characteristics

- Highway Districts
- County Boundary
- Interstate
- US/State Highway
- Local/Seasonal Road
- Railroads
- Urban Area Boundary
- National Forests
- Water Features
- Parks

*Data based on best available information. *Data for illustrative purposes only.

Figure 4.8a

KOOTENAI METROPOLITAN TRANSPORTATION PLAN
2010-2035



KOOTENAI METROPOLITAN TRANSPORTATION PLAN
2010-2035

**FUTURE CONDITIONS 2030 BUILD
AM PEAK LEVEL OF SERVICE, POST FALLS AREA**

Link & Node V/C Ratios

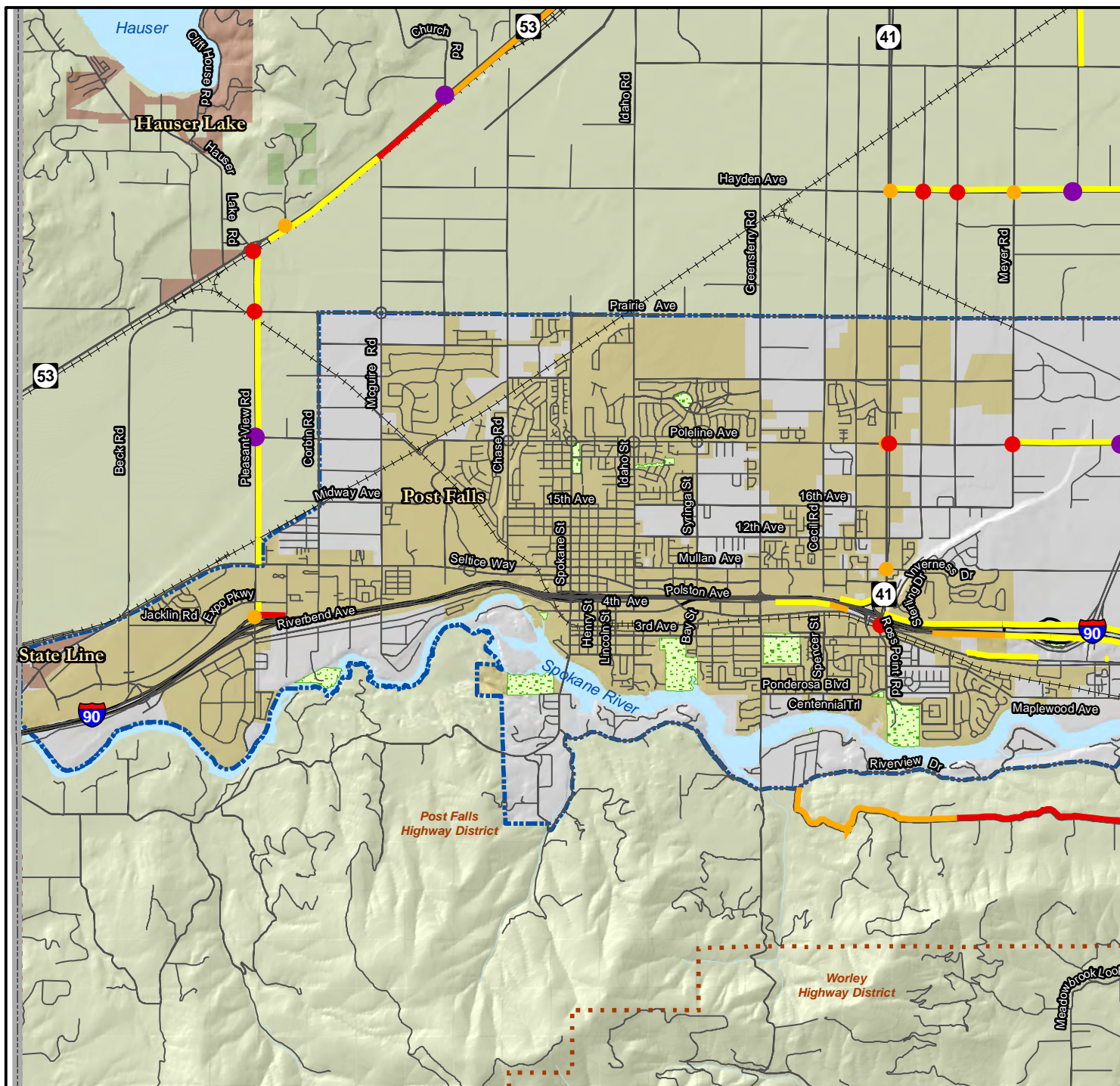
- Level C -> 70% ● > 80%
- Level D -> 80% ● > 90%
- Level E -> 90% ● > 100%
- Level F -> 100% ● > 100%

Physical Characteristics

- Highway Districts
- Interstate
- US/State Highway
- Local/Seasonal Road
- Railroads
- County Boundary
- Urban Area Boundary
- National Forests
- Water Features
- Parks

*Data based on best available information. *Data for illustrative purposes only.

KOOTENAI METROPOLITAN TRANSPORTATION PLAN
2010-2035



Kootenai MPO
KOOTENAI METROPOLITAN TRANSPORTATION PLAN
2010-2035

**FUTURE CONDITIONS 2030 BUILD
PM PEAK LEVEL OF SERVICE, POST FALLS AREA**

Link & Node V/C Ratios

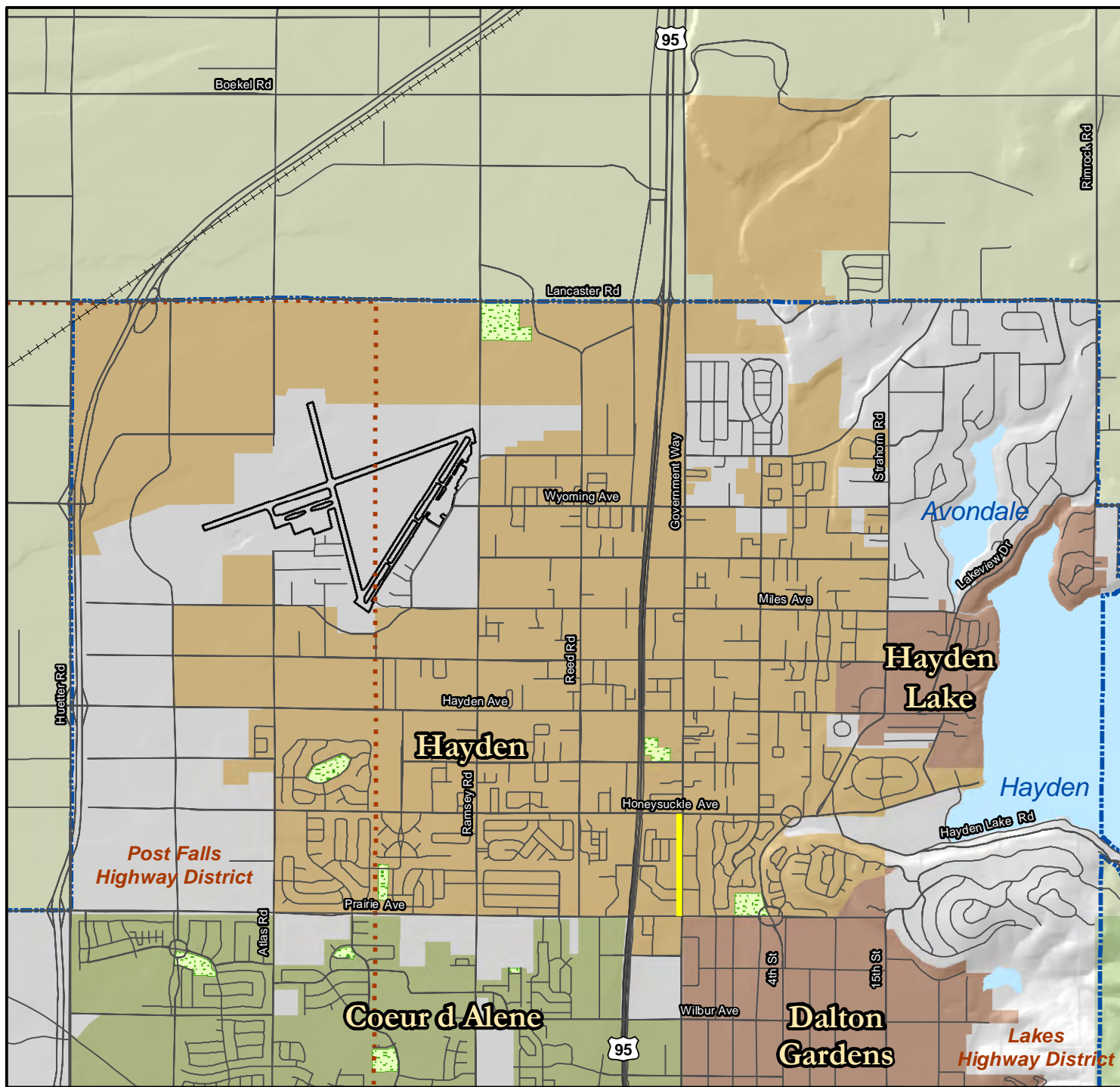
- Yellow line: Level C -> 70%
- Orange line: Level D -> 80%
- Red line: Level E -> 90%
- Purple line: Level F -> 100%
- Yellow circle: > 80%
- Red circle: > 90%
- Purple circle: > 100%

Physical Characteristics

- Red dashed line: Highway Districts
- Grey outline: County Boundary
- Thick black line: Interstate
- Thin black line: US/State Highway
- Thin grey line: Local/Seasonal Road
- Black line with cross-ticks: Railroads
- Blue dashed outline: Urban Area Boundary
- Green stippled area: National Forests
- Blue area: Water Features
- Green stippled area: Parks

*Data based on best available information. *Data for illustrative purposes only.

KOOTENAI METROPOLITAN TRANSPORTATION PLAN
2010-2035



Kootenai MPO
KOOTENAI METROPOLITAN TRANSPORTATION PLAN
2010-2035

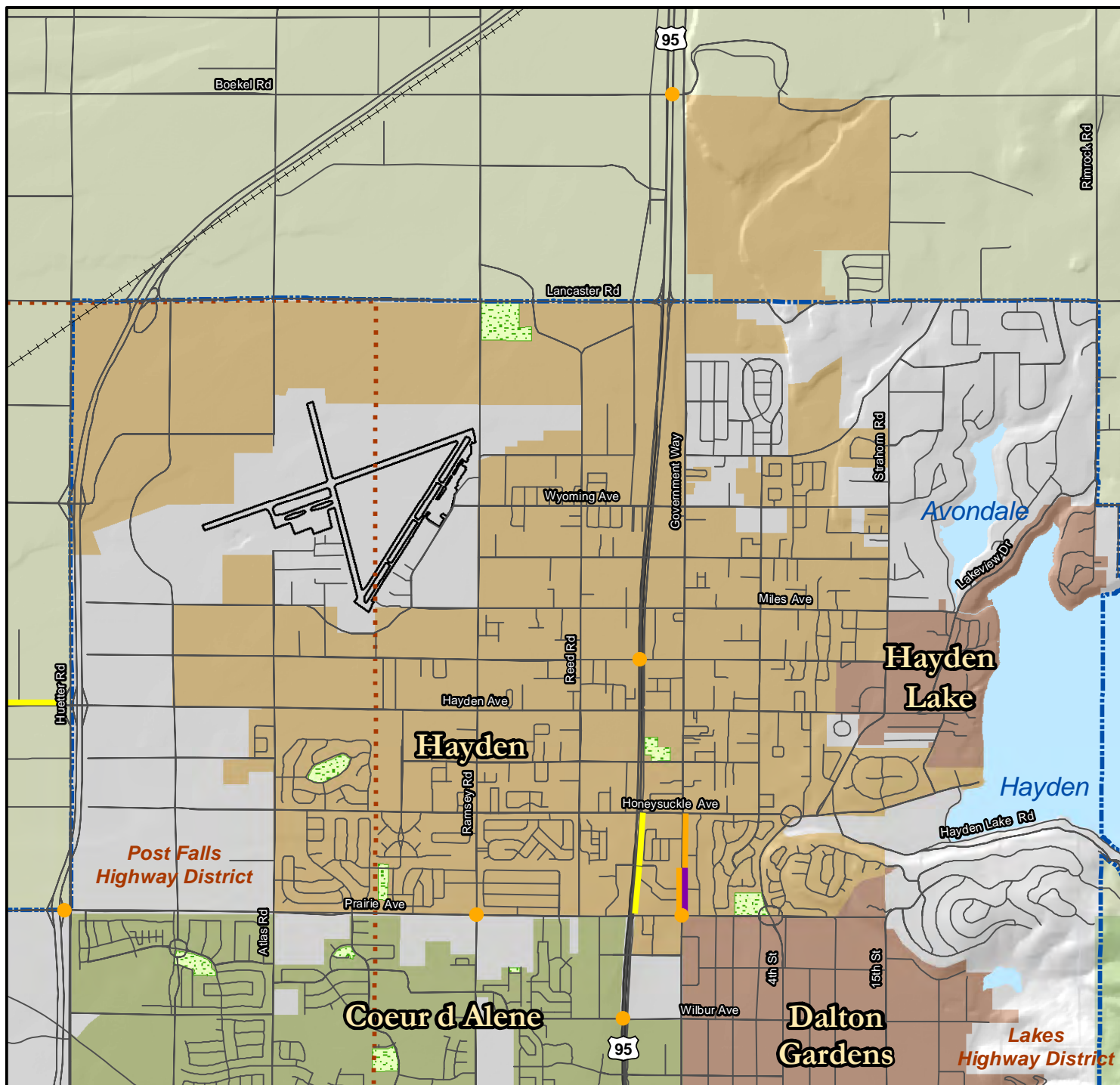
FUTURE CONDITIONS 2030 BUILD AM PEAK LEVEL OF SERVICE, HAYDEN AREA

Link & Node V/C Ratios		Physical Characteristics	
█ Level C -> 70%	● > 80%	 Highway Districts	County Boundary
█ Level D -> 80%	● > 90%	Interstate	Urban Area Boundary
█ Level E -> 90%	● > 100%	US/State Highway	National Forests
█ Level F -> 100%		Local/Seasonal Road	Water Features
		Railroads	Parks

*Data based on best available information. *Data for illustrative purposes only.

Figure 4.9b

KOOTENAI METROPOLITAN TRANSPORTATION PLAN
2010-2035



Kootenai MPO
KOOTENAI METROPOLITAN TRANSPORTATION PLAN
2010-2035

**FUTURE CONDITIONS 2030 BUILD
PM PEAK LEVEL OF SERVICE, HAYDEN AREA**

Link & Node V/C Ratios

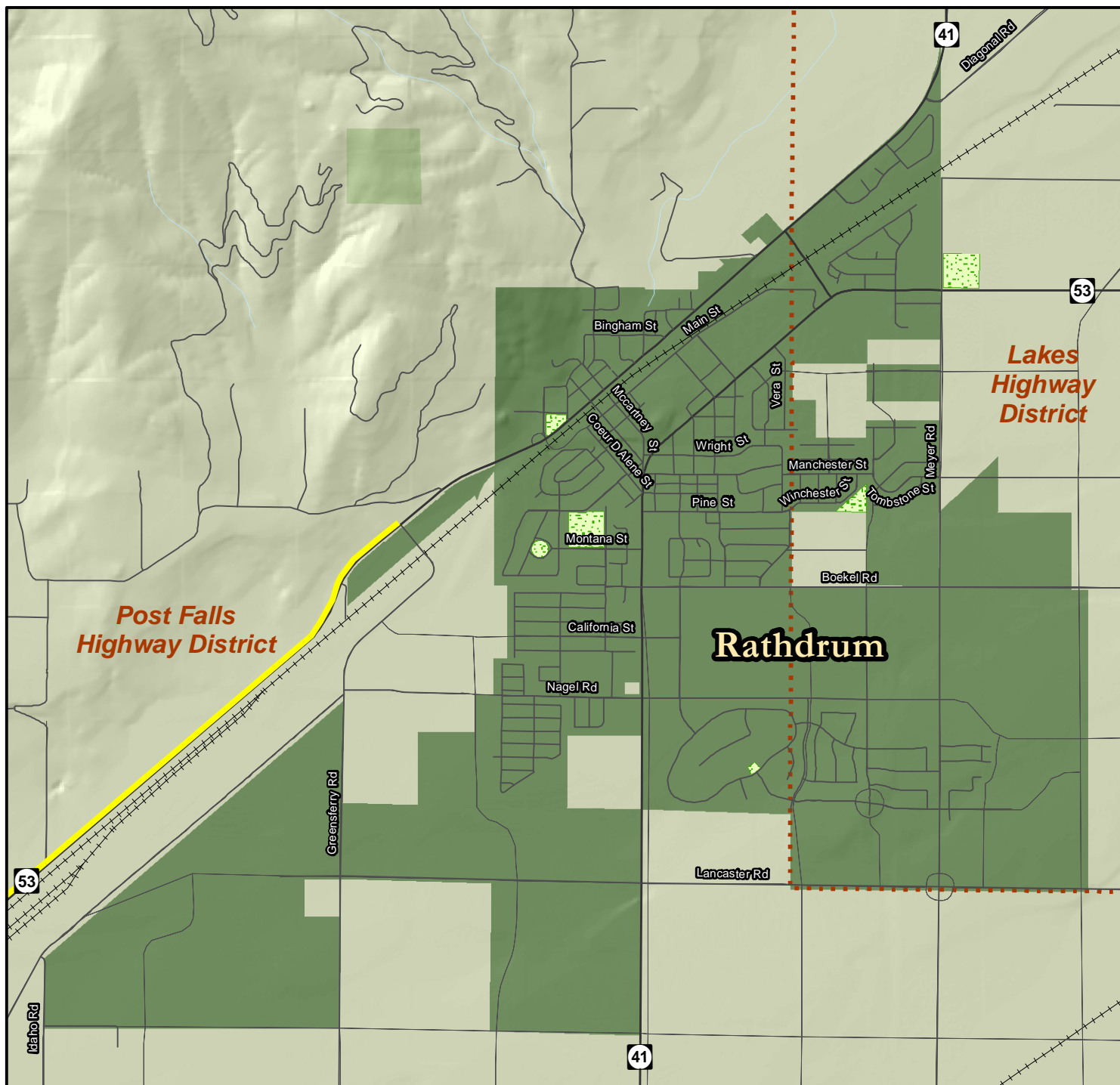
- Level C -> 70% > 80%
- Level D -> 80% > 90%
- Level E -> 90% > 100%
- Level F -> 100%

Physical Characteristics

- Highway Districts
- County Boundary
- Interstate
- US/State Highway
- Local/Seasonal Road
- Railroads
- Urban Area Boundary
- National Forests
- Water Features
- Parks

*Data based on best available information. *Data for illustrative purposes only.

KOOTENAI METROPOLITAN TRANSPORTATION PLAN
2010-2035



KOOTENAI METROPOLITAN TRANSPORTATION PLAN
2010-2035

**FUTURE CONDITIONS 2030 BUILD
AM PEAK LEVEL OF SERVICE, RATHDRUM AREA**

Line & Node V/C Ratios

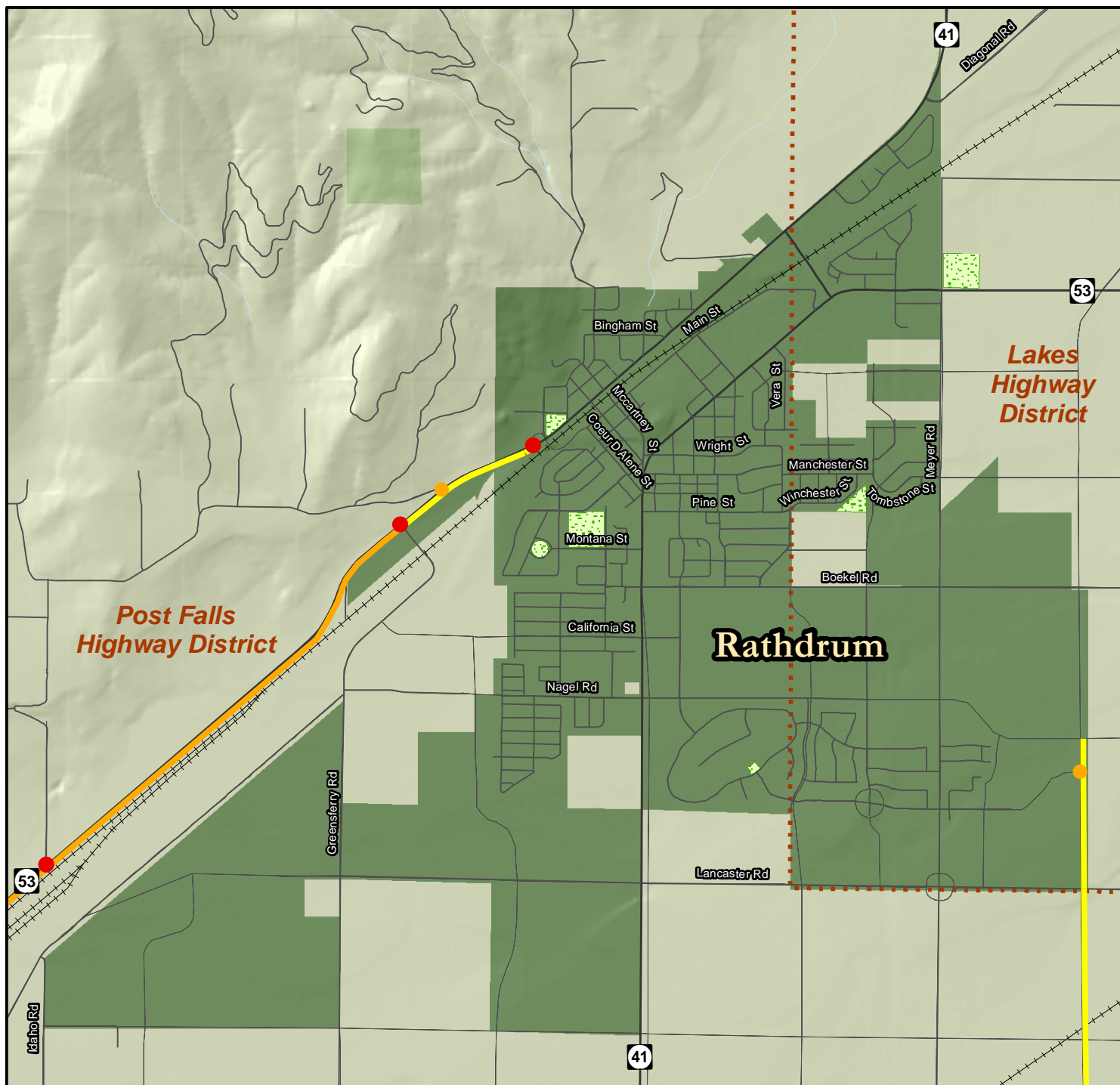
- Level C - > 70%
- Level D - > 80%
- Level E - > 90%
- Level F - > 100%
- > 80%
- > 90%
- > 100%

Physical Characteristics

- Highway Districts
- County Boundary
- Interstate
- Urban Area Boundary
- US/State Highway
- National Forests
- Local/Seasonal Road
- Water Features
- Railroads
- Parks

*Data based on best available information. *Data for illustrative purposes only.

KOOTENAI METROPOLITAN TRANSPORTATION PLAN
2010-2035



KOOTENAI METROPOLITAN TRANSPORTATION PLAN
2010-2035

**FUTURE CONDITIONS 2030 BUILD
PM PEAK LEVEL OF SERVICE, RATHDRUM AREA**

Line & Node V/C Ratios

- Yellow line: Level C - > 70%
- Orange line: Level D - > 80%
- Red line: Level E - > 90%
- Purple line: Level F - > 100%
- Yellow circle: > 80%
- Red circle: > 90%
- Purple circle: > 100%

Physical Characteristics

- Dashed red line: Highway Districts
- Solid black line: Interstate
- Thin black line: US/State Highway
- Thin grey line: Local/Seasonal Road
- Black line with cross-ticks: Railroads
- Grey rectangle: County Boundary
- Blue dashed rectangle: Urban Area Boundary
- Light green area: National Forests
- Blue area: Water Features
- Green square with trees: Parks

*Data based on best available information. *Data for illustrative purposes only.

Table 4.5 2030 Build Intersections > 80% Capacity, AM Pk hr

Location	Jurisdiction	% Capacity
I 90 EB on/off ramps at Northwest Blvd	ITD/Coeur d'Alene	106.9
Northwest Blvd and Lakewood Dr	Coeur d'Alene	106.4
US 95 Huetter Bypass NB on/off ramps at Poleline Ave	ITD/Post Falls Highway District	96.8
Northwest Blvd and Ironwood Dr	Coeur d'Alene	95.7
15th St and I 90 EB on ramp	ITD/Coeur d'Alene	92.8
Seltice Way (EB) and Huetter Rd	Post Falls Highway District	91.1
Huetter Rd and Poleline Ave	Post Falls Highway District	90.2
US 95 Huetter Bypass SB on/off ramps at Poleline Ave	ITD/Post Falls Highway District	90.1
Northwest Blvd and Emma	Coeur d'Alene	86.3
Huetter Rd and Dalton Ave	Post Falls Highway District	84.3
Northwest Blvd and Davidson Ave	Coeur d'Alene	84.2
Atlas Rd and Dalton Ave	Coeur d'Alene	83.8
Northwest Blvd and Market Loop	Coeur d'Alene	83.4
Atlas Rd and Hanley Ave	Coeur d'Alene	81.6
Ramsey Rd and Hanley Ave	Coeur d'Alene	80.1

Table 4.6 2030 Build Intersections > 80% Capacity, PM Pk hr

Location	Jurisdiction	% Capacity
Northwest Blvd and Lakewood Dr	Coeur d'Alene	132.9
US 95 Huetter Bypass NB on/off ramps at Poleline Ave	ITD/ Post Falls Highway District	131.9
I 90 EB on/off ramps at Northwest Blvd	ITD/ Coeur d'Alene	128.2
Atlas Rd and Dalton Ave	Coeur d'Alene	127.6
Ramsey Rd and Hanley Ave	Coeur d'Alene	126.5
Huetter Rd and Poleline Ave	Post Falls Highway District	124.7
Atlas Rd and Kathleen Ave	Coeur d'Alene	123.4
US 95 Huetter Bypass SB on/off ramps at Poleline Ave	ITD/ Post Falls Highway District	121.9
Seltice Way (EB) and Huetter Rd	Post Falls Highway District	121.8
Northwest Blvd and Ironwood Dr	Coeur d'Alene	120.0
15th St and I 90 EB on ramp	ITD/ Coeur d'Alene	117.9
Ramsey Rd and Kathleen Ave	Coeur d'Alene	117.9
Hayden Ave and Happy Trl	Post Falls Highway District	115.3
Huetter Rd and Dalton Ave	Post Falls Highway District	114.6
Atlas Rd and Hanley Ave	Coeur d'Alene	113.8
Northwest Blvd and Emma Ave	Coeur d'Alene	112.4
Government Way and Kathleen Ave	Coeur d'Alene	111.2
Carrington Rd and Dalton Ave	Coeur d'Alene	109.6
Northwest Blvd and Davidson Ave	Coeur d'Alene	109.5
SH 53 and Church Rd	ITD/ Post Falls Highway District	108.7
Northwest Blvd and Market Loop	Coeur d'Alene	108.5
Poleline Ave and Pleasant View Rd	Post Falls Highway District	107.4
5th St and Front Ave	Coeur d'Alene	107.4
Kathleen Ave and Player Dr	Coeur d'Alene	104.9
I 90 WB on/off ramps at Ramsey Rd	ITD/ Coeur d'Alene	103.2
Northwest Blvd and Lacrosse Ave	Coeur d'Alene	103.1
SH 53 and Greensferry Rd	ITD/ Post Falls Highway District	99.2
Northwest Blvd and Hubbard Ave	Coeur d'Alene	99.0
Ramsey Rd and Appleway Ave	Coeur d'Alene	97.9
Poleline Ave and SH 41 (NB)	ITD/Post Falls	97.7
Hayden Ave and E ½ Mile Rd	Post Falls Highway District	97.4
Hayden Ave and E ¼ Mile Rd	Post Falls Highway District	97.0
SH 53 NB on/off ramps at Pleasant View Rd	ITD/ Post Falls Highway District	97.0
SH 53 and Idaho Rd	ITD/ Post Falls Highway District	96.9
Bunco Rd and US 95 NB on/off ramps	Lakes Highway District /ITD	96.7
Seltice Way (WB) and Huetter Rd	Post Falls Highway District	96.4
Government Way and Haycraft Ave	Coeur d'Alene	96.4
US 95 at I 90 EB on/off ramps	ITD	96.2
SH 41 and Seltice Way	ITD/Post Falls	95.9
US 95 and Corbin Hill Rd	ITD/Lakes Highway District	95.5
4th and I 90 EB on/off ramps	ITD/ Coeur d'Alene	95.4
Ramsey Rd and Golf Course Rd	Coeur d'Alene	93.7
Pleasant View Rd and Prairie Ave	Post Falls Highway District	93.7
Meyer Rd and Poleline Ave	Post Falls Highway District	93.4
US 95 and Kathleen Ave	ITD/ Coeur d'Alene	92.0

Table 4.6 2030 Build Intersections > 80% Capacity, PM Pk hr – CONTINUED

Location	Jurisdiction	% Capacity
SH 53 and Main St	ITD/Rathdrum	91.1
4th St and Annie Ave	Coeur d'Alene	90.1
Government Way and Anton Ave	Coeur d'Alene	90.1
US 95 and Dalton Ave	ITD/ Coeur d'Alene	89.5
I 90 WB on/off ramps at Pleasant View Rd	ITD/Post Falls	88.4
SH 53 and Hidden Valley Rd	ITD/ Post Falls Highway District	88.1
Majestic St and Trails End Rd	Lakes Highway District	88.0
Government Way and Appleway	Coeur d'Alene	87.6
Mullan Ave and SH 41	ITD/ Post Falls Highway District	87.6
Meyer Rd and Hayden Ave	Post Falls Highway District	87.2
US 95 Huetter Bypass NB on/off ramps at Prairie Ave	ITD/ Post Falls Highway District	87.0
4th St and Harrison Ave	Coeur d'Alene	86.2
US 95 and Kathleen Ave	ITD/ Coeur d'Alene	85.9
US 95 and Dalton Ave	ITD/ Coeur d'Alene	85.8
SH 41 and Scarcello Rd	ITD/Lakes Highway District	85.7
Government Way and Dalton Ave	ITD/ Coeur d'Alene	85.7
Poleline Ave and SH 41 (SB)	ITD/Post Falls	85.7
US 95 and Hanley Ave	ITD/ Coeur d'Alene	85.1
SH 41 and Twin Lakes Rd	ITD/ Post Falls Highway District	84.7
Boekel Ave and US 95	ITD/Lakes Highway District	84.6
Prairie Ave and Government Way	Hayden	83.9
Ramsey Rd and Dalton Ave	Coeur d'Alene	83.8
Government Way and Ironwood Dr	Coeur d'Alene	83.4
Government Way and Neider Ave	Coeur d'Alene	82.8
US 95 and Wilbur Ave	ITD/Coeur d'Alene	82.8
US 95 and Dakota Ave	ITD/Hayden	82.7
Hanley Ave and Pinegrove Dr	Coeur d'Alene	82.7
SH 53 and Payment Peak Rd	ITD/Post Falls Highway District	82.6
SH 41 at I 90 WB on/off ramps	ITD	82.3
SH 53 and US 95 SB on/off ramps	ITD	82.2
4th St and Foster Ave	Coeur d'Alene	82.0
Hayden Ave and SH 41	ITD/Post Falls Highway District	81.5
Ramsey Rd and Prairie Ave	Hayden	81.5

Table 4.7 2030 Build Roadway Segments > 70% Capacity, AM Pk hr

Location	Jurisdiction	% Capacity
Hubbard Ave from Northwest Blvd to Lincoln Way	Coeur d'Alene	111
Northwest Blvd from Ironwood Dr to Lakewood Dr	Coeur d'Alene	102
Hubbard Ave from Lincoln Way to Northwest Blvd	Coeur d'Alene	95
Garden Ave from Hubbard Ave to between Hubbard Ave and College Dr	Coeur d'Alene	94
Northwest Blvd from Lakewood Dr to between Lakewood Dr and Emma Ave	Coeur d'Alene	89
Hubbard Ave from Northwest Blvd to River Ave	Coeur d'Alene	85
River Ave from N Hubbard Ave to S Hubbard Ave	Coeur d'Alene	85
Hanley Ave south section (WS/SE) of roundabout at Courcelles Pkwy	Coeur d'Alene	81
Northwest Blvd from Lakewood Dr to between Lakewood Dr and Emma Ave	Coeur d'Alene	81
Hanley Ave from roundabout at Courcelles Pkwy to Ramsey Rd	Coeur d'Alene	80
Northwest Blvd from Emma Ave to between Emma Ave and Mill Ave	Coeur d'Alene	80
Poleline Ave from US 95 Huetter Bypass SB on/off ramps to NB on/off ramps	Post Falls Highway District	79
Government Way from Centa Ave to Prairie Ave	Hayden	79
Northwest Blvd from Emma Ave to between Emma Ave and Davidson Ave	Coeur d'Alene	79
SH 53 from Church Rd to McGuire Rd	ITD/ Post Falls Highway District	77
I 90 from SH 41 IC to US 95 Huetter Bypass IC	ITD/Post Falls	77
Northwest Blvd from I 90 EB on/off ramps to SB Northwest Blvd/WB Seltice ramp	Coeur d'Alene	77
Northwest Blvd from Lacrosse Ave to US 95 on/off ramps	Coeur d'Alene	77
Northwest Blvd from Mill Ave to Lacrosse Ave	Coeur d'Alene	76
SH 53 from Idaho Rd to Church Rd	ITD/ Post Falls Highway District	75
I 90 from between US 95 Huetter Bypass IC and SH 41 IC to SH 41 IC	ITD/Post Falls	73
I 90 from US 95 Huetter Bypass IC to between US 95 Huetter Bypass IC and SH 41 IC	ITD/Post Falls	73
Kathleen Ave from Player Dr to St Michelle Dr	Coeur d'Alene	73
Huetter Rd from Poleline Ave to Dalton Ave	Post Falls	72
Northwest Blvd from SB Northwest Blvd/WB Seltice Way ramp to Ironwood Dr	Coeur d'Alene	72
SH 53 from Greensferry Rd to Idaho Rd	ITD/ Post Falls Highway District	71
Hanley Ave from Atlas Rd to just west of Madellaine roundabout	Coeur d'Alene	71
Government Way from Honeysuckle Ave to Centa Ave	Hayden	71
Park Dr from Northwest Blvd to Lincoln Way	Coeur d'Alene	71

Table 4.8 2030 Build Roadway Segments > 70% Capacity, PM Pk hr

Location	Jurisdiction	% Capacity
Hubbard Ave from Lincoln Way to Northwest Blvd	Coeur d'Alene	141
Hubbard Ave from Northwest Blvd to Lincoln Way	Coeur d'Alene	112
Northwest Blvd from Ironwood Dr to I 90 EB on/off ramps	Coeur d'Alene	107
Atlas Rd from Kathleen Ave to Dalton Ave	Coeur d'Alene	106
Government Way from Praire Ave to just south of Nita Ave	Hayden	105
Kathleen Ave from Player Dr to St Michele Dr	Coeur d'Alene	105
Dalton Ave from Holmes Rd to Atlas Rd	Coeur d'Alene	105
Dalton Ave Carrington Rd to Huetter Rd	Post Falls Highway District	105
Hanley Ave WB from Hanley Ave to Courcelles Pkwy via NE section of roundabout	Coeur d'Alene	103
Dalton Ave from Holmes Rd to Carrington Rd	Coeur d'Alene	103
Hanley Ave from Ramsey Rd to east end of roundabout at Courcelles Pkwy	Coeur d'Alene	102
Northwest Blvd from Lakewood Dr to Ironwood Dr	Coeur d'Alene	101
Kathleen Ave from Michelle Dr to Atlas Rd	Coeur d'Alene	99
Foster Ave from 3rd St to 4th St	Coeur d'Alene	96
Hanley Ave from Huetter Frontage Rd to US 95 Huetter Bypass NB on/off ramps	ITD/ Post Falls Highway District	94
Hanley Ave WB from Courcelles Pkwy to Hanley Ave via NW section of roundabout	Coeur d'Alene	94
SH 53 from McGuire Rd to Church Rd	ITD/ Post Falls Highway District	94
Northwest Blvd from Ironwood Dr to Lakewood Dr	Coeur d'Alene	93
Highland Dr from between Riverview Dr and Starlight Dr to Riverview Dr	Post Falls Highway District	92
Highland Dr from Riverview Dr/Upriver Dr to between Zircon Ln and Star Garnet Rd	Post Falls Highway District	92
Ramsey Rd from I 90 EB on/off ramps to Appleway Ave	Coeur d'Alene	92
I 90 WB off ramp to Pleasant View Rd	ITD/Post Falls	91
E/W Connector Road From NB US 95 Ramps to SB US 95 Ramps	ITD/Lakes Highway District	91
Highland from between Zircon Ln and Agate Rd to between Starlight Dr and Riverview Dr	Post Falls Highway District	90
Front Ave from 6th St to 5th St	Coeur d'Alene	89
Dalton Ave from Atlas Rd to Holmes Rd	Coeur d'Alene	89
Hanley Ave from Atlas Rd to between Cornwall St and Madellaine Dr roundabouts	Coeur d'Alene	88
SH 53 from Idaho Rd to Greensferry Rd	ITD/ Post Falls Highway District	88
Government Way from Honeysuckle Ave to just south of Nita Ave	Hayden	87
Poleline Ave from US 95 Huetter Bypass SB on/off ramps to NB on/off ramps	ITD/ Post Falls Highway District	87
Ramsey Rd from just south of Golf Course Rd to Golf Course Rd	Coeur d'Alene	87
SH 53 from Church Rd to Idaho Rd	ITD/ Post Falls Highway District	87
US 95 from Coeur d'Alene city limits to Fairmont Loop	ITD/East Side Highway District	87
Poleline Ave from US 95 Huetter Bypass NB on/off ramps to SB on/off ramps	ITD/ Post Falls Highway District	86

Table 4.8 2030 Build Roadway Segments > 70% Capacity, PM Pk hr – CONTINUED

Location	Jurisdiction	% Capacity
Dalton Ave from Huetter Rd to Carrington Rd	Post Falls Highway District	86
Ramsey Rd from Golf Course Rd to Kathleen Ave	Coeur d'Alene	86
Poleline Ave from US 95 Huetter Bypass SB on/off ramps to east of Reiswig Rd	ITD/ Post Falls Highway District	85
Ramsey Rd from Appleway Ave to just south of Golf Course Rd	Coeur d'Alene	85
I 90 EB off ramp to Seltice Way	ITD/Post Falls	84
I 90 from EB on ramp from SH 41 to US 95 Huetter Bypass IC	ITD/Post Falls	84
Northwest Blvd from between Emma Ave and Lakewood Dr to Lakewood Dr	Coeur d'Alene	84
Garden Ave from Hubbard Ave to between Hubbard Ave and College Dr	Coeur d'Alene	83
Government Way from just south of Nita Ave to Praire Ave	Hayden	83
Hanley Ave from between Courcelles Pkwy and Madellaine Dr to half way between roundabout and Cornwall St	Coeur d'Alene	83
Northwest Blvd from between Emma Ave and Lakewood Dr to Emma Ave	Coeur d'Alene	83
US 95 East Frontage Rd from Bunco Rd to Silver Spur	ITD/ Lakes Highway District	83
Hanley Ave EB from Courcelles Pkwy to Hanley Ave via SE section of roundabout	Coeur d'Alene	82
I 90 from Ramsey Rd/Northwest Blvd IC to NB off ramp at Huetter Bypass	ITD/Coeur d'Alene	82
Dalton Ave from Carrington Rd to Holmes Rd	Coeur d'Alene	82
Northwest Blvd from Lakewood Dr to between Lakewood Dr and Emma Ave	Coeur d'Alene	82
Sunshine St from just north of Sunburst Ave to Hanley Ave	Coeur d'Alene	82
New US 95 overpass north of Silver Spur Rd from US 95 East Frontage Rd to NB on/off ramps of US 95	ITD/ Lakes Highway District	81
Hanley Ave from roundabout at Courcelles Pkwy to Ramsey Rd	Coeur d'Alene	81
Poleline Ave from US 95 Huetter Bypass NB on/off ramps to Huetter Frontage Rd	ITD/ Post Falls Highway District	81
Northwest Blvd from between Emma Ave and Davidson Ave to Mill Ave	Coeur d'Alene	81
Seltice Way from west of Riverstone Dr to Atlas Rd	Coeur d'Alene	81
Hayden Ave from US 95 Huetter Bypass SB on/off ramps to SH 41	Post Falls Highway District	80
I 90 WB on ramp from SH 41	ITD/Post Falls	80
Pleasant View Rd from I 90 WB on/off ramps to Expo Pkwy/5th Ave	ITD/Post Falls	80
Poleline Ave from just west of US 95 Huetter Bypass SB ramps to Meyer Rd	Post Falls Highway District	80
Hanley Ave EB from Hanley Ave to Courcelles Pkwy via SW section of roundabout	Coeur d'Alene	79
Hanley Ave from west end of roundabout at Courcelles Pkwy to between Courcelles Pkwy and Madellaine Dr	Coeur d'Alene	79
I 90 WB on ramp from US 95 Huetter Bypass to SH 41 IC	ITD/ Post Falls Highway District	79
Northwest Blvd from Davidson to between Davidson Ave and Emma Ave	Coeur d'Alene	79
Northwest Blvd from Emma Ave to between Emma Ave and Davidson Ave	Coeur d'Alene	79
Northwest Blvd from Emma Ave to between Emma Ave and Lakewood Dr	Coeur d'Alene	79
SH 53 from Hidden Valley Rd to Main St	ITD/Rathdrum	79

Table 4.8 2030 Build Roadway Segments > 70% Capacity, PM Pk hr – CONTINUED

Location	Jurisdiction	% Capacity
15th St from I 90 EB off ramp to I 90 EB on ramp (from SB 15th)	Coeur d'Alene	78
Poleline Ave from Atlas Rd to just east of Huetter Frontage Rd	Coeur d'Alene	78
Hanley Ave from between the roundabout at Madellaine Dr and Cornwall St to Atlas Rd	Coeur d'Alene	78
SH 53 from Greensferry Rd to Hidden Valley Rd	ITD/Post Falls Highway District	78
Best Ave from 4th St to 6th St	Coeur d'Alene	77
Trails End Rd from Wyoming Ave to Ok Corral Rd	Post Falls Highway District	77
Northwest Blvd from between Davidson Ave and Emma Ave to Emma Ave	Coeur d'Alene	77
Northwest Blvd from Mill Ave to Davidson Ave	Coeur d'Alene	77
Pleasant View Rd from Seltice Wy to Poleline Ave	Post Falls Highway District	77
Northwest Blvd from Mill Ave to approximately Linden Ave	Coeur d'Alene	76
Pleasant View Rd from Poleline Ave to SH 53	Post Falls Highway District	75
SH 53 from NB on/off ramps at Pleasant View Rd to McGuire Rd	ITD/Post Falls Highway District	75
Atlas Rd from Dalton Ave to Kathleen Ave	Coeur d'Alene	74
Government Way from Appleway Ave to Anton Ave	Coeur d'Alene	74
Kathleen Ave from St Michelle Dr to Player Dr	Coeur d'Alene	74
Trails End from Lancaster Ave to Nagel Rd	Rathdrum	74
Northwest Blvd from Hubbard Ave to US 95 on/off ramps	Coeur d'Alene	74
Northwest Blvd from approximately Linden Ave to Mill Ave	Coeur d'Alene	74
Ramsey Rd from I 90EB on/off ramps to WB on/off ramps	Coeur d'Alene	74
I 90 EB from Greensferry Rd IC to EB off ramp at SH 41	ITD/Post Falls	73
Kathleen Ave from Ramsey Rd to Player Dr	Coeur d'Alene	73
Seltice Way (WB) from Commerce Loop (Alley) to west end of couplet	Post Falls Highway District	73
US 95 from Prairie Ave to Honeysuckle Ave	ITD/Hayden	73
15th St from I 90 EB on ramp (from SB 15th) to I 90 EB on ramp (from NB 15th)	Coeur d'Alene	72
Front Ave from 5th St to 6th St	Coeur d'Alene	72
Front Ave from 5th St to Sherman Ave	Coeur d'Alene	72
Government Way from Anton Ave to Neider Ave	Coeur d'Alene	72
Huetter Frontage Rd from Poleline Ave to Dalton Ave	Post Falls Highway District	72
I 90 EB from US 95 Huetter Bypass on/off ramps to Northwest Blvd IC	ITD/Post Falls Highway District	72
I 90 WB from off ramp to NB US 95 Huetter Bypass to SB on ramp from bypass	ITD/Post Falls Highway District	72
Seltice Way from Atlas Rd to Huetter Rd	Coeur d'Alene	72
Hanley Ave from Pinegrove Dr to Ramsey Rd	Coeur d'Alene	71
Trails End Rd from OK Corral Rd to Lancaster Ave	Post Falls Highway District	71
Seltice Way from Seeley St to Main St	Post Falls Highway District	71
Sunshine St from Hanley Ave to just north of Sunburst Ave	Coeur d'Alene	71