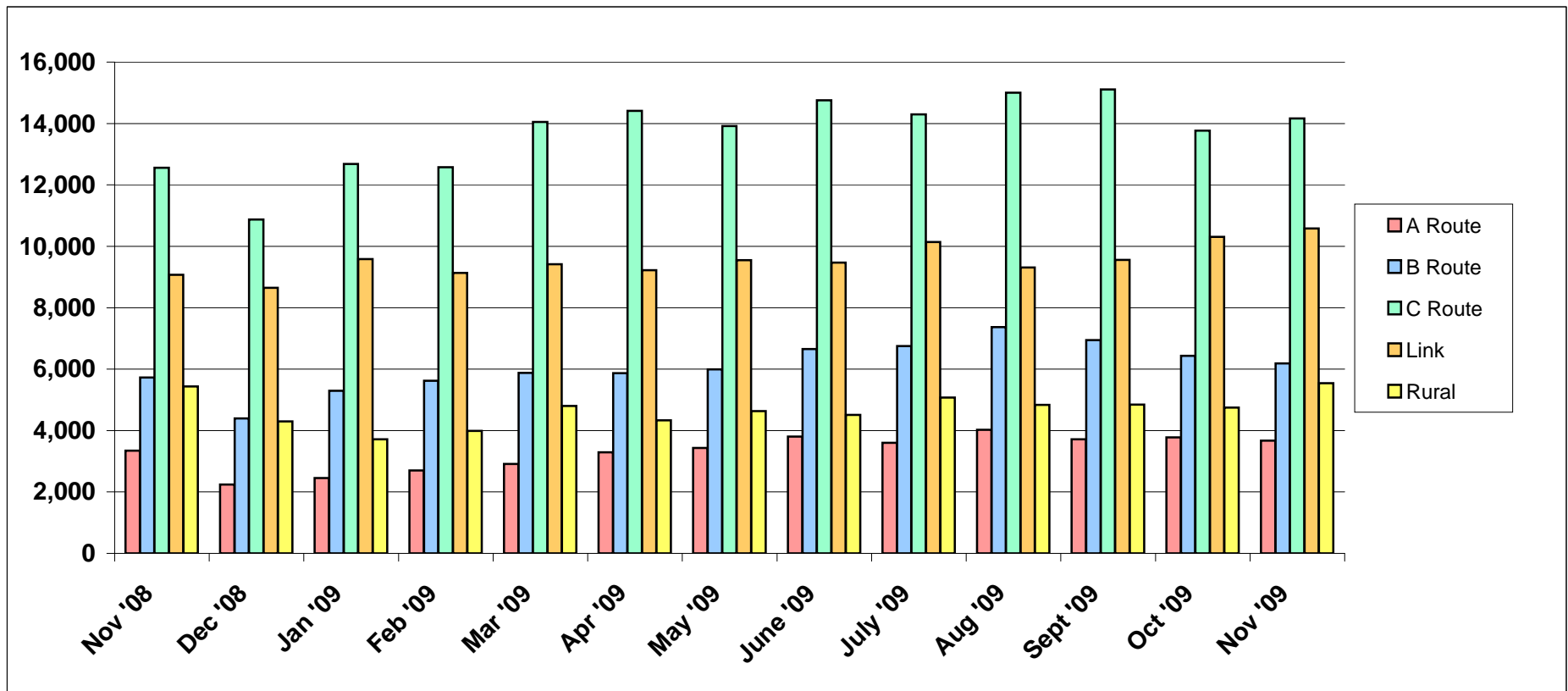


Citylink

2008-2009 Comparison

	Nov '08	Dec '08	Jan '09	Feb '09	Mar '09	Apr '09	May '09	June '09	July '09	Aug '09	Sept '09	Oct '09	Nov '09
A Route	3,343	2,242	2,457	2,704	2,909	3,291	3,435	3,804	3,602	4,022	3,713	3,777	3,668
B Route	5,726	4,394	5,298	5,623	5,878	5,868	5,995	6,650	6,748	7,367	6,949	6,431	6,186
C Route	12,561	10,873	12,685	12,580	14,051	14,412	13,918	14,760	14,293	15,003	15,106	13,763	14,162
Link	9,075	8,648	9,581	9,132	9,415	9,218	9,551	9,470	10,138	9,311	9,559	10,310	10,577
Rural	5,432	4,297	3,711	3,989	4,801	4,336	4,632	4,511	5,072	4,839	4,841	4,746	5,538
Totals	36,137	30,454	33,732	34,028	37,054	37,125	37,531	39,195	39,853	40,542	40,168	39,027	40,131



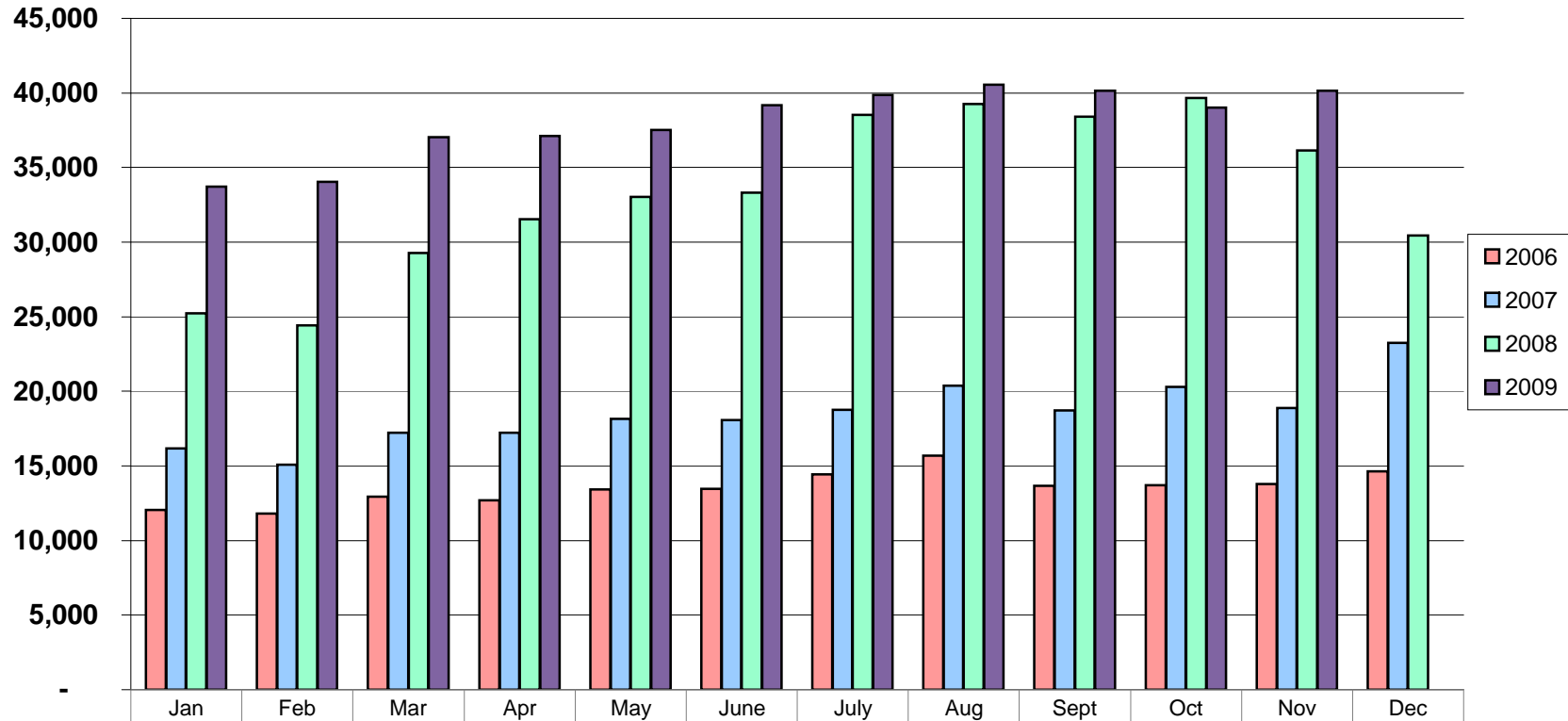
A Route: Post Falls and State Line

B Route: Post Falls, Hayden and CDA

C Route: CDA and Hayden

Citylink

2006-2009 Total Ridership Comparison



	Jan	Feb	Mar	Apr	May	June	July	Aug	Sept	Oct	Nov	Dec
2006	12,062	11,815	12,940	12,696	13,421	13,465	14,426	15,690	13,676	13,719	13,795	14,635
2007	16,177	15,083	17,233	17,227	18,170	18,089	18,755	20,389	18,711	20,281	18,886	23,255
2008	25,242	24,419	29,271	31,538	33,017	33,311	38,528	39,241	38,416	39,665	36,137	30,454
2009	33,732	34,028	37,054	37,125	37,531	39,195	39,853	40,542	40,168	39,027	40,131	

